

THE VOICE FOUNDATION



MAY 30-JUNE 3, 2018



47th ANNUAL SYMPOSIUM Care of the Professional Voice

A DIFFERENT KIND OF MEETING

bringing together physicians, scientists, speech-language pathologists, singers, professional speakers, and teachers to share their knowledge and expertise in the care of the professional voice user

Jointly provided by The Voice Foundation and the American College of Surgeons in collaboration with Drexel University College of Medicine, Temple University, The American Institute for Voice and Ear Research, and the Academy of Vocal Arts.

VOICEFOUNDATION.ORG

The Westin Hotel | 99 South 17th Street | Philadelphia PA 19103

CONTINUING MEDICAL EDUCATION CREDIT INFORMATION

Accreditation

This activity has been planned and implemented in accordance with the Essential Areas and Policies of the Accreditation Council for Continuing Medical Education (ACCME) through the joint providership of the American College of Surgeons and Voice Foundation. The American College of Surgeons is accredited by the ACCME to provide continuing medical education for physicians.

AMA PRA Category 1 Credits™

The American College of Surgeons designates this live activity for a maximum of **26.00 AMA PRA Category 1 Credits™**. Physicians should claim only the credit commensurate with the extent of their participation in the activity.



AMERICAN COLLEGE OF SURGEONS

Inspiring Quality:
Highest Standards, Better Outcomes

100+ years

Disclosure Information

In compliance with the ACCME Accreditation Criteria, the American College of Surgeons, as the accredited provider of this activity, must ensure that anyone in a position to control the content of the educational activity has disclosed all relevant financial relationships with any commercial interest. All reported conflicts are managed by a designated official to ensure a bias-free presentation. All reported conflicts are managed by a designated official to ensure a bias-free presentation. Please see the insert to this program for the complete disclosure list.

Grant Acknowledgement

The Voice Foundation wishes to recognize and thank the following companies for their ongoing support through educational grants: **Plural Publishing and Pentax Medical.**

ASHA CONTINUING EDUCATION UNITS

DISCLOSURE INFORMATION: Please go to <http://voicefoundation.org/2018asha/> for the complete disclosure of all relevant financial and non-financial relationships.

GRADUATE CREDIT

It may be possible to obtain graduate credit through independent study from your University's Dept. of Speech-Language Pathology. Registration must be completed prior to the first day of the Symposium.



Temple University is approved by the Continuing Education Board of the American Speech-Language-Hearing Association (ASHA) to provide continuing education activities in speech-language pathology and audiology. **See course information for number of ASHA CEUs, instructional level and content area.** ASHA CE Provider approval does not imply endorsement of course content, specific products or clinical procedures.

This course is offered for up to 3.80 ASHA CEUs (Various levels, Professional Area)

NEEDS ASSESSMENT

The specialty of voice care involves rapidly advancing technology, new medical and scientific knowledge, and constant advancement in patient care. State-of-the-art symposia and courses are essential for interdisciplinary communication and education. For forty-two years The Voice Foundation's Annual Symposium has fulfilled these needs for the international community.

LEARNING OBJECTIVES

This activity is designed for **The Voice Foundation**. Upon completion of this course, participants will be able to.....

- Increase knowledge of recent technological, scientific and clinical advances in the study of the human voice;
- Increase understanding in the diagnosis and treatment of voice disorders and techniques for vocal fold surgery;
- Be able to apply various voice examinations/evaluations, therapy and teaching techniques;
- Foster dialogue and cooperation among the various disciplines concerned with the care of the professional voice;
- Gain interdisciplinary information about clinical and research aspects of neurology; and,
- Understand the relationship between normal and abnormal voice production and the various means of studying the voice.

TARGET AUDIENCE

Physicians, Nurses, Speech-Language Pathologists, Voice Scientists, Voice and Speech Coaches and Trainers, Singing Teachers and other voice specialists from around the world.

THE VOICE FOUNDATION BOARD OF DIRECTORS
CHAIRMAN
 Robert Thayer Sataloff, MD, DMA, FACS
PRESIDENT
 Stuart Orsher, MD
VICE-PRESIDENT
 Michael S. Benninger, MD
SECRETARY
 Mary Hawkshaw
TREASURER
GENERAL COUNSEL
 Brian P. Flaherty, Esq.
CHAIRMAN,
ADVISORY BOARD
 Michael M. Johns III, MD

DIRECTORS
 Martina Arroyo
 Harolyn Blackwell
 Claudia Catania
 Abdul-latif Hamdan, MD, FACS
 Mary Hawkshaw
 Walt Hunter
 Gwen S. Korovin, MD
 Justice Sandra Schultz Newman
 Renata Scotto
 Michael Sheehan
 George Shirley

Executive Director
 Maria Russo, MM

Executive Coordinator
 Katie Erikson, MM

Newsletter Editors
 Mary Sandage, PhD
 Kim Steinhauer, PhD

Workshop & Audio Visual Coordinator
 Margaret Baroody, MM

CME/CEU & Volunteer Coordinator
 Bridget Rose, CCC-SLP

Educational Coordinator
 Mary J. Hawkshaw, RN, CORLN

NATS/TVF Chat Moderation
 Kari Ragan, PhD
 Margaret Baroody, MM

Symposium Agenda

*WEDNESDAY, MAY 30	2-3
*THURSDAY, May 31	3-12
*FRIDAY, JUNE 1	12-17
*SATURDAY, JUNE 2	17-28
Master Class Teacher Simon Estes	29
*SUNDAY, JUNE 3	30-37
Van Lawrence Award, Chapters	38
48th Annual Symposium	39
Faculty List	40-65
TVF Advisory Board	66
Journal of Voice Ed Board	67
Presentation Coaching	68-69
TVF Awards History	70-71
Donors, Exhibitors	72
Membership	73
2018 Registration Information	74
Meeting Schedule	75
Symposium Calendar Wed-Fri	76
Symposium Calendar Sat-Sun	77

CONTENTS

Grant Acknowledgement

The Voice Foundation wishes to thank **Elsevier, Inc., Plural Publishing, and PENTAX Medical** for their ongoing support through educational grants.

CONSULT THE FACULTY LIST FOR A COMPLETE LIST OF PRESENTER AND AUTHOR DEGREES

WELCOME TO THE 47th ANNUAL SYMPOSIUM: CARE OF THE PROFESSIONAL VOICE

PROGRAM COMMITTEES

SCIENTIFIC PROGRAM

CHARLES LARSON, RONALD C. SCHERER
NANCY P. SOLOMON, JOHAN SUNDBERG

MEDICAL PROGRAM

MICHAEL S. BENNINGER,
MICHAEL M. JOHNS,
ROBERT T. SATALOFF

SPEECH-LANGUAGE PATHOLOGY

MARY (MOLLY) ERICKSON,
THOMAS MURRY, ROBERT T. SATALOFF

VOICE PEDAGOGY

DAVID MEYER , SCOTT MCCOY
ROBERT T. SATALOFF

PANELS

MICHAEL M. JOHNS,
YOUNG LARNGOLOGISTS

YOUNG LARYNGOLOGISTS

THOMAS CARROLL, CHAIR
JAYME DOWDALL,
JOEL PORTNOY, DAVID ROSOW,
AMY RUTT

AWARD COMMITTEES

NEW INVESTIGATORS RESEARCH

FORUM

MARY (MOLLY)
ERICKSON, CHAIR
MARA BEHLAU
CHRISTIAN HERBST
SHIGERU HIRANO
DAVID MEYER

QUINTANA VOICE RESEARCH

AWARD

RONALD C. SCHERER, CHAIR
FARI ALIPOUR
RJ BAKEN
MARA BEHLAU
DIMITAR DELIYSKI
ULRICH EYSHOLDT
JOHAN SUNDBERG
JAN ŠVEC

BEST STUDENT AWARD COMMITTEE

SHAHEEN AWAN, CHAIR
CLAUDIA ECKLEY
JEANNETTE LOVETRI
LYNDSAY LEIGH MADDEN
STEPHANIE MISONO
PETER POPOLO

HAMDAN INTERNATIONAL

PRESENTATION AWARD

RAHUL SHRIVASTAV, CHAIR
JONATHAN BOCK
RAY COLTON
AARON JOHNSON

SATALOFF AWARD FOR

YOUNG INVESTIGATORS

NORMAN HOGIKYAN, CHAIR
DALE EKBOM
ERIC HUNTER
DENIS LAFRENIERE
DAVID E. ROSOW
KRISTIANE VAN LIERDE

VAN L. LAWRENCE

FELLOWSHIP AWARD

ROBERT T. SATALOFF , CHAIR
JULIE M. BARKMEIER-
KRAEMER
MATTHIAS ECHTERNACH
BRIAN HORNE
ALBERT MERATI
LINDA SNYDER

MAY 30

WEDNESDAY, MAY 30, 2018

**WEDNESDAY
2018**

AGENDA

1:00p	Registration Opens (Lobby outside Grand Ballroom)
2:00p	Introduction and Welcome <i>Robert T. Sataloff, MD, FACS, Chairman</i> (Grand Ballroom, Salon II)
2:15p	Anatomy and Physiology of Phonation: An Overview <i>Robert T. Sataloff, MD, FACS</i>
3:00p	Production and Perception of Voice: An Overview <i>Charles Larson, PhD, Johan Sundberg, PhD</i>
4:00p	Coffee Break (Grand Ballroom, Salon III — Exhibit Hall)
4:30p	Production and Perception of Voice: An Overview (cont.) <i>Ronald S. Scherer, PhD, Sten Ternström, PhD, David Eddins, PhD, William Riley, MM</i>

WEDNESDAY, MAY 30, 2018 CONT.

6:30p Question and Answer
7:00p Adjourn

THURSDAY, MAY 31, 2018

7:20a Meeting of the Quintana Voice Research Award Committee
(The Board Room)

7:30a Registration Opens

8:05a Opening Remarks
Introduction and Welcome
Robert Thayer Sataloff, MD, FACS, Chairman
(Grand Ballroom)

BASIC SCIENCE SESSION I (8:15AM - 9:30AM)

SESSION I: SINGING – SOME PRODUCTION ASPECTS

Chair: Johan Sundberg, PhD

Discussant: Brenda Smith, DMA

The Westin Philadelphia Hotel: Grand Ballroom

8:15a What Causes Airflow Vibrato?
Srihimaja Nandamudi, PhD, Ronald C. Scherer, PhD

8:30a A Comparison of Videokymography and Electroglottogram for
Measuring Contact Quotient Values in Classically Trained Singers
Richard J. Morris, PhD, David Okerlund, MM,
Mary M. Gorham-Rowan, PhD, Shonda Bernadin, PhD,
Elizabeth A. Farr, BS

8:45a Effects of the Lung Volume on the Electroglottographic
Waveform
Sten Ternström, PhD, Sara D'Amario, MA

9:00a Panel Discussion
Moderator: Johan Sundberg, PhD
Discussant: Brenda Smith, DMA
Nandamundi, Morris, Ternström

QUINTANA RESEARCH AWARD LECTURE 9:30AM—10:00AM

**Biomaterials and Strategies for Permanent Vocal Fold
Lamina Propria Repair and Reconstruction**

Dr. Luc Mongeau is a Mechanical Engineer by training, with B.Eng. and M. Eng. Degrees from the University of Montreal, Canada. He has obtained his Ph.D. in Acoustics from the Pennsylvania State University in 1991. He first entered the field of voice biomechanics when he built a mechanical replica of the human larynx for flow measurements as Postdoctoral Member of Technical Staff at AT&T Bell Laboratories in Murray Hill, New Jersey. After joining Purdue University in 1993, Dr. Mongeau climbed through the ranks

MAY 31
THURSDAY
2018

AGENDA



while conducting research in Aero- and Thermo-Acoustics, Computational Fluid Dynamics, Noise and Vibration control. His research interests increasingly focused on the biomechanics of voice production. He investigated laryngeal flows, sound production mechanisms, and viscoelastic properties using both experimental and computational methods. Dr. Mongeau joined the Dept. of Mechanical Engineering at McGill University in 2006, where he conducts research on tissue engineering of the human larynx for voice restoration. He presently holds the Tier I Canada Research Chair in Voice Biomechanics and Mechano-biology. He has published over 100 peer reviewed journal articles on various aspects of voice production and tissue engineering of the human vocal folds. He has supervised many graduate students that have grown to become (... or have always been ...) independent researchers in the field of Voice Biomechanics. He is a member of The Voice Foundation, a Fellow of the Acoustical Society of America, a Senior Member of the AIAA, and a member of the Canadian Society of Biomaterials, and the European Society of Biomechanics.

10:00a Coffee Break (Grand Ballroom, Salon III — Exhibit Hall)

**BASIC SCIENCE SESSIONS II & III
(10:30AM - 12:00PM)**

SESSION II: ACOUSTICS

Chair: Ronald C. Scherer, PhD

Discussant: Jean Abitbol, MD

The Westin Philadelphia Hotel: Grand Ballroom

10:30a Limbo Ballet of Source Spectrum Partial
Johan Sundberg, PhD, Svante Granqvist, PhD

10:45a Evaluating Timbre Spectrum and Glottal Open Quotient via
Pitch-Synchronous Segmentation of Voice Signals
C. Julian Chen, PhD, Donald Miller, PhD

SESSION III: HIGH SPEED VIDEO – DIAGNOSTICS AND SAFETY

The Westin Philadelphia Hotel: Grand Ballroom

Chair: Ronald C. Scherer, PhD

Discussant: Jean Abitbol, MD

11:00a Vibratory Onset of Adductor Spasmodic Dysphonia and Muscle
Tension Dysphonia: A High Speed Video Study
Wenli Chen, MS, Peak Woo, MD, Thomas Murry, PhD

11:15a Safety Aspects of Endoscopic Laser-based 3D Imaging
*Marion Semmler, MSc, Maik Zimmermann, Dipl-Ing,
Anne Schützenberger, MD, Michael Döllinger, PhD*

BASIC SCIENCE II & III (CONTINUED)

11:30a Panel Discussion
Moderator: Ronald C. Scherer, PhD
Discussant: Jean Abitbol, MD
Panelists: *Sundberg, C.J. Chen, W. Chen, Semmler*

12:00p Lunch Break (on your own)

Journal of Voice Editorial Board Meeting (TBD)
Presentation Outreach Committee Meeting (The Director's Room)

KEYNOTE SPEECH (1:30PM - 2:30PM)

1:30p **KEYNOTE ADDRESS: BORIS ALEXANDER KLEBER, PHD**
Introduction: Robert T. Sataloff, MD, FACS

TITLE: The Brain That Learns To Sing and Is Changed By It

Boris Kleber completed a Master of Science (2002) in Psychology at the University of Konstanz (Germany), received a PhD in Neuroscience (2009) from the University of Tübingen (Germany), and was awarded a higher



doctorate degree (Habilitation) in Psychology from the University of Tübingen (2016). His main scientific interest is focused on the singing voice as a model for experience-dependent plasticity in the brain. During his PhD, he worked with EEG Neurofeedback in the context of well-being and performance anxiety, and pioneered fMRI research with opera singers. This work was crucially developed during his post-doctoral research with Prof. Robert

Zatorre at the Montreal Neurological Institute (QC, Canada) and with Prof. Niels Birbaumer in Tübingen, where he also used transcranial magnetic stimulation to probe the role of sensorimotor interactions. Since 2016,

Dr. Kleber is assistant professor at the Center for Music in the Brain, Aarhus University (Denmark), integrating his previous work on vocal motor control and interoception with the concept of predictive coding. Current projects aim at understanding the role of the somatosensory feedback subsystem in vocal production, vocal improvisation and creativity, as well as the role of reward in motor sequence learning.

MAY 31
THURSDAY
2018

AGENDA

MAY 31

THURSDAY

2018

AGENDA

BASIC SCIENCE SESSION IV (2:30PM - 4:00PM)

METHODOLOGICAL ADVANCES IN HIGH SPEED VIDEO ANALYSES

Chair: Charles Larson, PhD

Discussant: Michael S. Benninger, MD

The Westin Philadelphia Hotel: Grand Ballroom

2:30p Evaluation of Sharpness of Lateral Peaks of the Vocal Fold Vibrations in High-Speed Videokymographic Images
Pravin Kumar Subbaraj, PhD, Ketaki Vasant Phadke, MSc, Jitka Vydrová, MD, Adam Novozámský, MEng, Barbara Zitová, PhD, Jan G. Svec, PhD et PhD

2:45p Analysis and Estimation of the Glottal Area in Connected Speech via Temporal and Spatial Segmentation of High-Speed Videoendoscopy
Maryam Naghibolhosseini, PhD, Dimitar Deliyski, PhD, Stephanie R.C. Zacharias, PhD, Alessandro de Alarcon, MD, Robert F. Orlikoff, PhD

3:00p Laser-Calibrated System for Laryngeal Transnasal Flexible High-Speed Videoendoscopy
Dimitar D. Deliyski, PhD, Daryush D. Mehta, PhD, Matias Zanartu, PhD, Milen Shishkov, PhD, Brett E. Bouma, PhD, Alessandro de Alarcon, MD, Hamzeh Ghasemzadeh, MSc

3:15p Machine-Learning Approach for Automatic Detection of Calibrating Laser Light in Transnasal Flexible High-Speed Videoendoscopy
Hamzeh Ghasemzadeh, MSc, Maryam Naghibolhosseini, PhD, Daryush D. Mehta, PhD, Dimitar D. Deliyski, PhD

3:30p - Panel Discussion
Moderator: Charles Larson, PhD
Discussant: Michael S. Benninger, MD
Panelists: *Subbaraj, Naghibolhosseini, Deliyski, Ghasemzadeh*

POSTER SESSIONS

4:00p **Chair: Ronald C. Scherer, PhD**
The Westin Philadelphia: Ballroom Prefunction Room

4:00pm - 4:45pm Odd Numbers (P1, P3, P5...)

5:00pm - 5:45pm Even Numbers (P2, P4, P6...)

Refreshments in the Exhibit Hall during this session.

POSTER SESSION I 4:00PM - 4:45PM

**MAY 31
THURSDAY
2018**

AGENDA

- P1) Factors Contributing to Vocal Abuse and Voice Disorders of Clergy**
Kimberly Nash Alexander, D. Phil
- P3) Classification of Subjective Parameters of Voice Using Artificial Neural Networks**
*Andriéli Hilário Barizão, Murillo Augusto Fermino,
Danilo Hernane Spatti, PhD, Glaucya Madazio, PhD, Mara Behlau, PhD*
- P5) The Use of Mindfulness Based Stress Reduction (MBSR) Treatment for Functional Voice Disorders**
*Susan Baker Brehm, PhD, Renee Gottliebson, PhD, Katie Duffy, BS,
Barbara Weinrich, PhD*
- P7) Spectral/Cepstral Analysis of Phonation in Parkinson's Disease Before and After Voice Treatment**
*Michael P Cannito, PhD, Ghada Alharbi, MSc, Eugene H. Buder, PhD,
Shaheen Awan, PhD*
- P9) Relationship between Vocal Fry and Vowel Height**
*Lady Catherine Cantor-Cutiva, PhD, Pasquale Bottalico, PhD,
Eric Hunter, PhD*
- P11) Talkativeness, Vocal Loudness, and Voice Symptoms in Acting Undergraduates**
*Ana Carolina Constantini, PhD, Filipe Modesto, BSc,
Nivia Dionisio Catarino de Jesus, BSc*
- P13) Self-Regulation Behaviors in Chilean Subjects with Behavioral Dysphonia**
Soledad Correa, MS, Mara Behlau, PhD
- P15) A New Treatment Method for Puberphonia: High Backpressure in DoctorVox Therapy**
*Ilter Denizoglu, MD, Mustafa Sahin, MD, Seda Bayrak, MSc,
Melek Nur Uygun, MSc*
- P17) Quality and Readability of English-Language Internet Information for Voice Disorders**
*Abigail Dueppen, MS, Nandhu Radhakrishnan, PhD, Monica Harn, PhD,
Vinaya Manchaiah, PhD*
- P19) Effects of Neuromuscular Electrical Stimulation Associated with Intensive Vocal Therapy in Elderly**
*Eliana Maria Gradim Fabron, PhD, Kelly Cristina Alves Silvério, PhD,
Giédre Berretin-Felix, PhD, Rinaldo de Jesus Guirro, PhD,
Cíntia Procópio da Silva, SLP, Millena Maria Ramalho Matta Vieira, SLP,
Pâmela Aparecida Medeiros Moreira, SLP,
Alcione Ghedini Brasolotto, PhD*
-

MAY 31
THURSDAY
2018

AGENDA

POSTER SESSION I (CONTINUED)

- P21) Relationship between Vocal Acoustic Characteristics and Chronological and Bone Ages in Prepubertal Children**
*Congeta Bruniere Xavier Fadel, MD, Ana Paula Dassie Leite, PhD,
Afranio de Souza de Melo, MD, Luiz de Lacerda, PhD*
- P23) Active or passive? – A Closer Look at the “Purring” Sound Production Mechanism of Domestic Cats (*Felis silvestris catus*)**
*Christian Herbst, PhD, Tamara Mauder, Mag.med.vet,
Maxime Garcia, PhD, Vit Hampala, PhD, Ingo Titze, PhD,
W. Tecumseh Fitch, PhD, Gerald Weissengruber, Dr.med.vet*
- P25) Riedel’s Thyroiditis and Cordal Paralysis: A Single Case Study**
Gonzalo Inostroza, SLP
- P27) A Survey of Voice Rest Practices after Phonomicrosurgery**
Ashwini Joshi, PhD, Michael M. Johns III, MD
- P29) Perceptions of the Effects of Vocal Fry on Aspirational Careers in Prospective Job Markets**
Darby Kunneemann, BSE, Fran Hagstrom, PhD, Eva van Leer, PhD
- P31) Symptoms and Vocal Fatigue in Brazilian University Professors**
*Ana Paula Dassie Leite, PhD, Gabrieli Cristina Santos Cercal,
Jaqueline Mendes Mendez Novis, Antônio Leonardo De Paula*
- P33) Performance of Different Acoustic Measurements to Discriminate Individuals with and without Voice Disorders**
Leonardo Lopes, PhD, Vinícius Jefferson Dias Vieira, MS, Mara Behlau, PhD
- P35) Mandarin (Simplified) Chinese Version of the Voice Activity and Participation Profile: Adaptation and Validation**
Dan Lu, PhD
- P37) Comprehensive Voice Habilitation Program [CVHP] for Hyperfunctional Voice Disorders - A Study from South India**
*Shenbagavalli Mahalingam, SLP, Prakash Boominathan, PhD,
Ravikumar Arunachalam, MD, Lakshmi Venkatesh, PhD*
- P39) Changes in Fundamental Frequency across the Life Span in Brazilian Portuguese Speakers**
*Viviane Cristina de Castro Marino, PhD, Evelyn Alves Spazzapan, SLP,
Vanessa Moraes Cardoso, MS, Larissa Cristina Berti, PhD,
Eliana Maria Gradim Fabron, PhD*
- P41) SOVTE in Low and High Voices: Is There Any Difference?**
Diego Henrique C. Martinho, SLP, Ana Carolina Constantini, PhD
- P43) Mapping of International Classification of Functioning, Disability and Health (ICF) Framework on Vocal Health Questionnaire for Teachers**
*Aishwarya Nallamuthu, MASLP, Prakash Boominathan, PhD,
Ravikumar Arunachalam, MS*
-

POSTER SESSION I (CONTINUED)

- P45) Voice Quality of People Undergoing Radiotherapy for Laryngeal Cancer**
Dilhani Nayakarathana, SLP, Samantha Kalupahana, SLP
- P47) Trends in Singing Voice Research: An Innovative Approach**
*Pedro Melo Pestana, BSc., Susana Vaz-Freitas, PhD,
Maria Conceição Manso, PhD*
- P49) Comparison of Laryngeal Diadochokinetic Rate (LDDK) for Reproductive Age and Post-Menopausal Women**
Laura W. Plexico, PhD, Mary Sandage, PhD
- P51) Cross-cultural Adaptation of the Chilean Version of the Voice-Related Quality of Life (V-RQOL)**
*Francisco Contreras Ruston, SLP, Marco Guzman, PhD,
Nury Gonzalez, SLP, Martín Vivero, SLP*
- P53) Saving a Career: Treatment of Velopharyngeal Insufficiency (VPI) in a Professional Oboist**
Valerie L Trollinger, DME, Bridget Rose, CCC-SLP
- P55) The Production and Perception of Continuous Vocal Fry in Healthy Speakers**
Anumitha Venkatraman, MS, Preeti M. Sivasankar, PhD

POSTER SESSIONS - CHANGEOVER 15 MINUTES

POSTER SESSION II 5:00PM - 5:45 PM

- P2) Association between Subglottic Pressure and Pulmonary Function Tests in Subjects with Parkinson's Disease**
*Adrián Castillo Allendes, MSc, Javiera Castillo Martínez, SLP,
Alvaro Reyes Ponce, PhD,*
- P4) Supraglottic Characteristics and their Relationships with Glottic Configuration and Vocal Quality of the Elderly**
*Alcione Ghedini Brasolotto, PhD, Izadora Santos,
Letícia de Lemos Freixo, SLP, Kelly Cristina Alves Silverio, PhD*
- P6) Behavioral and Neurophysiological Effects of Combined LSVT-LOUD® and Transcranial Magnetic Stimulation in Speakers with Parkinson Disease**
*Michael P Cannito, PhD, Katherine Schiller, BS, Bella Budlinski, MS,
Mark S. LeDoux, MD, Asim Choudhri, MD, Tamekia Jones, PhD,
Shalini Narayana, PhD*
- P8) Use of Lombard Effect On A Functional Voice Problem**
*Juliana Codino, MA, Adam D. Rubin, MD,
Maria Cristina Jackson-Menaldi, PhD*

**MAY 31
THURSDAY
2018**

AGENDA

MAY 31
THURSDAY
2018

AGENDA

POSTER SESSION II (CONTINUED)

- P10) Analysis of Phonation Threshold Pressure, Contact Quotient, and Self-Perceived Voice Quality in Subjects with Behavioral Dysphonia and Normal Voices after Two Semi-Occluded Vocal Tract Exercises**
Soledad Correa, MS, Marco Guzman, PhD, Camilo Quezada, PhD, Felipe Moreti, PhD, Glaucya Madazio, PhD, Mara Behlau, PhD
- P12) Objective Voice Measures in Patients with Unilateral and Bilateral Superior Laryngeal Nerve Paresis**
Srihari Daggumati BS, Haig Panossian MD, Brian Mckinnon, MD, Robert T. Sataloff, MD
- P14) Voice Characteristics of Women with Polycystic Ovary Syndrome**
Evelien D'haeseleer, PhD, Sofie Claeys, MD, Sophia Ghys, SLP, Kristiane Van Lierde, PhD
- P16) Voice Analysis of Radio-TV Broadcasters: Gender vs Content**
Blaire Dykes, Nandhu Radhakrishnan, PhD
- P18) Dosage Dependent Effect of the Vocal Fry Technique in Subjects without Vocal Complaints**
Congeta Bruniere Xavier Fadel, MD, Glaucya Madazio, PhD, Rosiane Yamasaki, PhD, Mara Behlau, PhD
- P22) Assessment of Tongue Position and Laryngeal Height in Two Professional Voice Populations**
Carly Jo Hosbach-Cannon, PhD, Soren Y. Lowell, PhD, Raymond H. Colton, PhD, Richard T. Kelley, MD, Xue Bao, BS
- P24) A Novel Laryngeal Palpatory Scale (LPS) in Patients with Muscle Tension Dysphonia**
Narges Jafari, Abolfazl Salehi, Farzad Izadi, Abbas Ebadi, Iris Meerschman, Evelien D'haeseleer, PhD, Kristiane Van Lierde, PhD
- P26) Understanding Speakers' Ability to Increase Phonation Time Estimation Accuracy**
Lisa M. Kopf, PhD
- P28) Effects of Lee Silverman Voice Treatment (LSVT LOUD®) with Spanish-Speaking Population**
Leslie Ledee-Lozada, CCC-SLP, Angela Halpern, CCC-SLP, Maria Claudia Franca, PhD
- P30) Perception of Overall Severity of Voice Deviation in Synthesized Voices: Predictive Factors**
Leonardo Lopes, PhD, Jorge Lucero, PhD, Mara Behlau, PhD
- P32) Changes after Voice Therapy in Acoustic Voice Analysis of Chinese Patients with Voice Disorders**
Dan Lu, PhD

POSTER SESSION II (CONTINUED)

- P34) Relative Effectiveness of a Vocal Hygiene Program among Primary School Teachers with Self – Reported Voice Problems in Matara Education Zone**
H. K. C. Madushani, BSc, Shermi Nanayakkara, BSc, Bandini Jayasena, BSc
- P36) Intensive Short-term Voice Therapy (IVT) for an Individual with Chronic Dysphonia – A Single Case Study**
Shenbagavalli Mahalingam, SLP, Prakash Boominathan, PhD
- P38) Impact of Non-modal Phonation on Estimates of Subglottal Pressure from Neck-Surface Acceleration in Healthy Speakers**
Katherine L. Marks, MS, Daryush D. Mehta, PhD
- P40) Factors to Predict the Impact of Voice Therapy on Vocal Fold Atrophy in Elderly**
Shogo Mato, SLP, Makoto Miyamoto, MD, Itaru Watanabe, MD, Yoshiyuki Hayashi, SLP, Tsubasa Ishii, SLP, Hideki Nakagawa, MD, Koichiro Saito, MD
- P42) Vocal Training Program to Facilitate Vocal Health in Teachers – A Single Case Report**
Aishwarya Nallamuthu, MASLP, Prakash Boominathan, PhD, Ravikumar Arunachalam, MS
- P44) Examining Chemosensation in Laryngeal Health and Disorders**
Carolyn K. Novaleski, PhD, Richard L. Doty, PhD, Marco Tizzano, PhD, Alissa A. Nolden, PhD, Pamela H. Dalton, PhD, Paul M. Wise, PhD, Karen Wheeler Hegland, PhD
- P46) Comparison of Cepstral Peak Prominence for Reproductive Age and Post Menopausal Women**
Laura W. Plexico, PhD, Mary Sandage, PhD
- P48) Cross-Cultural Adaptation, Validation, and Cutoff Values of the Chilean Version of the Voice Symptom Scale: VoiSS**
Francisco Contreras Ruston, SLP, Felipe Moreti, PhD, Celina Malebran, SLP, Martín Vivero, SLP, Mara Behlau, PhD
- P50) Cross-cultural Adaptation of the Argentinian Version of the Vocal Tract Discomfort Scale (VTDS)4**
María Alejandra Santi, SLP, Andrea Karina Romano, SLP, María Eugenia Dajer, PhD, Silvana Montenegro, PhD
- P52) An Investigation of Acoustic Parameters in the Speech of Mimicry Performers**
Santhosh Simon MSc, Stuart Cunningham, PhD, Towino Paramby CScD
-

MAY 31
THURSDAY
2018

AGENDA

MAY 31
THURSDAY
2018

AGENDA

JUNE 1
FRIDAY
2018

POSTER SESSION II (CONTINUED)

- P54) Vocal Self-Assessment of Theater Students after Using the Lax Vox Latex Tube**
*Geovana Ramazzini Vechi, SLP, Ana Carolina Constantini, PhD,
Lavoisier L. Neto, MS*
- P56) Teaching Reliable Perception of Voice Qualities: A Review of the Literature**
Patrick R. Walden, PhD, Robert M. Velardi, BA

5:45p Dinner (on your own)

SPECIAL SESSION (7:15PM - 8:15PM)

Tutorial: Measuring Sound Pressure Level
The Westin Philadelphia Hotel: TBD
Moderator: Johan Sundberg, PhD

7:15p Guidelines on Measurement of Sound Pressure Level (SPL) of Voice
Jan G. Svec, PhD et PhD, Svante Granqvist, PhD

8:15p Adjourn

FRIDAY, JUNE 1, 2018

- 6:45a Advisory Board Meeting:
Chair: *Michael M. Johns III, MD*
(The Director's Room)
- 7:30a Registration Opens
(Lobby outside Grand Ballroom)

SPECIAL SESSION (8:00AM - 11:50AM)
EXERCISE AND THE VOICE

Moderator: Nancy Pearl Solomon, PhD
The Westin Philadelphia Hotel: Grand Ballroom

8:00a Historical Context and Introductions
Nancy Pearl Solomon, PhD

8:10a Science and the Sports Vocalist
Mary Sandage, PhD

8:45a Neuromuscular Physiology of Vocal Exercise
Aaron M. Johnson, PhD

SPECIAL SESSION (CONTINUED)	
9:20a	Coffee Break – Exhibit Hall
9:50a	Be a Better Instrument: Sport-Specific Training for the Vocal Athlete <i>Claudia Friedlander, DMA</i>
10:25a	Synthesizing Vocal Technique with Whole Body Awareness Through Yoga <i>Mark Moliterno, MM</i>
11:00a	Panel Discussion
11:50a	Presentation: The 27 th Annual Van L. Lawrence Fellowship Award Chair: Robert Thayer Sataloff, MD, FACS The Westin Philadelphia Hotel: Grand Ballroom
12:00p	Lunch Break (on your own) Authors Remove Posters from Poster Boards (Prefunction)
12:15p	Meeting of the Voice Foundation Board of Directors (The Board Room)
12:15p	The Young Laryngologist Study Group Session (The Director's Room)

JUNE 1
FRIDAY
2018

AGENDA

FRIDAY, JUNE 1, 2018 6:00PM WESTIN HOTEL

VOICES OF SUMMER GALA

Cocktails, Dinner, Concert, Awards, Dancing

HONORING SIMON ESTES

 KAREN HEPP AND LAUREN JOHNSON

 WALTER WILLIAMS

 CICELY TYSON

FEATURING: Dominick Chenes, tenor

Tickets: at the Registration Desk * (215)575-6942 * voicefoundation.org

JUNE 1
FRIDAY
2018

AGENDA

WORKSHOPS

REMINDER

The Workshops are at the **Academy of Vocal Arts, 1920 Spruce St.**, a short walk from the Westin. MAPS AT THE REGISTRATION DESK & IN REGISTRATION FOLDERS
Directions to Workshops – Friday, June 1st

Start: The Westin 99 S. 17th Street (Liberty Place, between Market and Chestnut Streets)

1. Exit hotel and turn **LEFT** onto South 17th Street (toward Chestnut Street).
2. Continue down 17th Street until you reach Spruce Street (about four blocks).
3. Turn **RIGHT** onto Spruce Street.
4. Continue on Spruce Street until you reach 1920 Spruce Street (about two blocks).
The Academy of Vocal Arts is on Spruce between 19th and 20th Streets.

End: 1920 Spruce Street

The Academy of Vocal Arts 1920 Spruce Street

Note: The American College of Surgeons does not provide CME credit for this portion of the program. ASHA offers CEU credit for this portion of the program.

**DIRECTIONS TO ACADEMY OF VOCAL ARTS (AVA) ARE AVAILABLE
IN YOUR FOLDERS AND AT THE REGISTRATION DESK**

WORKSHOPS SESSION I (1:30PM - 2:25PM)

Singing Voice

- ◆ What the Fach? Voice Dysphoria in the Transgender and Gender-queer Singer
Loraine Sims, DMA
- ◆ Beyond Park and Bark
Danielle Bridges, BM, Sheri Cook-Cunningham, PhD
- ◆ French Pronunciation in Song
Jean-Yves Bosse-Vidal, MA

Musical Theater/Pop/Rock/CCM

- ◆ Applying Prosody of Language Strategies to Enhance the Dramatic Delivery of a Song and Facilitate the Discovery of Appropriate Vocalisms in Various Musical Theatre and Contemporary Styles
Ana Flavia Zuim, PhD

Rehabilitation of the Injured Singing Voice

- ◆ Use of a Vortex Whistle for Measures of Respiratory Capacity and Control
Shaheen N. Awan, PhD, Jordan A. Awan, PhD Candidate
- ◆ Troubleshooting Vocal Function Exercises:
What to Do When the “/ol/” Won’t Buzz
Carly S. Cantor, CCC-SLP, Kimberly Duncan, CCC-SLP

WORKSHOPS SESSION I (CONTINUED)

Acting Voice

- ◆ IPA Hand-Jive: Using Gesture for Shaping and Voicing IPA Symbols
Lester Thomas Shane

Body Awareness and Voice

- ◆ Body Awareness Training for Singers and Voice Teachers
Ting-Yu Chen, MFA

WORKSHOPS SESSION II (2:30PM - 3:25PM)

Singing Voice

- ◆ The Voice Teacher as Fitness Trainer: Adapting Principles of Sports Science to Optimize Laryngeal and Articulatory Efficiency
Claudia Friedlander, DMA
- ◆ Watch Your Tongue! Ultrasound & Physioacoustic in the 21st Century Voice Studio
Angelika Nair, PhD
- ◆ Connecting to the Negro Spiritual: Emotionally, Musically and Vocally
Marquita Lister, MM

Musical Theater/Pop/Rock/CCM

- ◆ MythBusters for Singers
Sally Morgan, BA

Rehabilitation of the Injured Speaking Voice

- ◆ MPT of /s/, /z/, and /z/ a Clinical Goldmine
Marina Gilman, CCC-SLP
- ◆ The Pediatric Team Voice Evaluation: Tips and Tricks
Paula Barson, MA, Angie Connor, CCC-SLP, Kimberly Duffy, CCC-SLP, Abigail Rosenberg, CCC-SLP

Rehabilitation of the Injured Singing Voice

- ◆ Adapted Yoga Techniques for Voice Therapy and Singing Voice Rehabilitation
Kenneth Tom, PhD

Acting Voice - Presentational Voice

- ◆ The Power of the Psoas Muscles for the Speaker
Donna Snow, MFA

JUNE 1
FRIDAY
2018

AGENDA

JUNE 1
FRIDAY
2018

AGENDA

WORKSHOPS SESSION III (3:30PM - 4:25PM)

Singing Voice

- ◆ The Mindful Performer
Kristine Hurst-Wajszczuk, DMA
- ◆ From the Studio to the Conference Call
Kate Peters, MM
- ◆ Techniques for Addressing Tongue Tension in Singing: A Presentation of Strategies Followed By Application with Master Class Singers
Carla LeFevre, DMA

Musical Theater/Pop/Rock/CCM

- ◆ Training Singers to Belt – a Functional, Resonance-Based Approach: A Practical Guide to Teaching Style-driven “Shades” of Belt Singing using Functional Voice Technique
Irene Bartlett, DMA

Rehabilitation of the Injured Speaking Voice

- ◆ LaxVox and DoctorVox Voice Therapy Techniques
Ilter Denizoglu, MD

Rehabilitation of the Injured Singing Voice

- ◆ Spending the Interest, Not the Principle: Vocal Pacing During Voice Rehabilitation and Beyond
Leda Searce, MS

Acting Voice

- ◆ Vocal Production and Proprioceptive Movement
Tamiko Washington, MFA

Body Awareness and Voice

- ◆ Self-Care for the Vocal Health Professional: Strategies and Practice in How to Care for Your Voice and Body While in the Midst of Helping Others
Diane Gaary, MFA
-

WORKSHOPS SESSION IV (4:30PM - 5:25PM)

**JUNE 1
FRIDAY
2018**

Singing Voice

- ◆ “Sing for Life”: Strategies for Singing after 50
Brenda Smith, DMA
- ◆ Consider the Source: Exercises and Techniques to Develop Efficient Glottal Closure
Amelia Rollings, PhD
- ◆ Meeting the Mood: Transforming the Vocal Warm-Up
Megan Durham, MM
- ◆ Understanding and Using Rehearsal and Performance Space Acoustics as a Solo or Choir Singer
David M. Howard, PhD

AGENDA

Speech Therapy

- ◆ How to Help Your Patient Who Can’t Breathe or Stop Coughing
Sally Gallena, PhD

Rehabilitation of the Injured Singing Voice

- ◆ Head/Neck Massage and Relaxation Techniques for Voice Therapy and Overall Health/Wellness
Deanna McBroom, MM, Lucinda Halstead, MD

Acting Voice

- ◆ Up and Out –Finding the Spine in Acting
Janet Madelle Feindel, MFA

Voice Science/Technology

- ◆ Practical Application of the Electroglottograph (EGG) in Singing Instruction
Donald Gray Miller, PhD

SATURDAY, JUNE 2, 2018

**JUNE 2
SATURDAY
2018**

- 7:00a-7:50a New Investigator Research Forum
Chair: Molly Erickson
(The Board Room) (CEUs available)
- 7:30a Registration Opens
(Lobby outside Grand Ballroom)

AGENDA

**JUNE 2
SATURDAY
2018**

AGENDA

MEDICAL SESSION IA (8:00AM—9:50AM)

Chair: Fabian Unteregger, MD

The Westin Philadelphia Hotel: Grand Ballroom, Salon I

8:00a Comparison of Two Computational Approaches for Dynamic 3D Vocal Fold Parameters
Anne Schützenberger, MD, Marion Semmler, MSc, Michael Döllinger, PhD

8:10a Tension and Contraction of the Thyroarytenoid Muscle: A 3D Analysis during Singing
Fabian Unteregger, MD, Priska Wagner, MD, Silke Potthast, MD, Salome Zwicky, MD, Flurin Honegger, PhD, Claudio Storck, MD

8:20a Acoustic and Perceptual Correlates of Reduced Vibratory Capability of the Vocal Folds
Austin Collum, SLP, Juliana Codino, SLP, Adam Rubin, MD

8:30a Relating Cepstral Peak Prominence to HSV Glottal Waveform Parameters in Patients with Hoarse or Breathless Voice: A Pilot Study
Peter S. Popolo, PhD, Peak Woo, MD

8:40a The Relationship between Voice Handicap Index and Laryngeal EMG Findings in Patients with Vocal Fold Paresis and Paralysis
Srihari Daggumati BS, Haig Panossian MD, Brian Mckinnon, MD, Robert T. Sataloff, MD

8:50a Discussion

9:00a Prediction of Vocal Fatigue from Acoustical Voice Parameters in Virtual Acoustics Scenarios
Pasquale Bottalico, PhD, Lady Catherine Cantor-Cutiva, PhD, Eric J. Hunter, PhD

9:10a Detection of Vocal Fatigue in Voice Acting Using Glottal Notch Acceleration
Nicholas Ogradnik, B-Eng, Zhengdong Lei, M-Eng, Nicole Yee-Key Li-Jessen, PhD, Luc Mongeau, PhD

9:20a Validation of a Set of Synthetic Stimuli to Study Perception of Dysphonic Voices in Continuous Speech
Ingrid Verduyck, PhD, Sophie Daigle, MPO, Maude Grégoire, MPO, Dick Botteldooren, PhD, Annelies Bockstael, PhD

9:30a Detection of Diplophonia in Audio Recordings of German Standard Text Readings with Automatic Temporal Segmentation
Philipp Aichinger, PhD, Jean Schoentgen, PhD

9:40 Discussion

**MEDICAL SESSION 1B (8:00AM - 9:50AM)
CONCURRENT WITH SESSION 1A**

**JUNE 2
SATURDAY
2018**

**Chair: Stephanie Misono, MD
The Westin Philadelphia Hotel: Grand Ballroom, Salon II**

AGENDA

- 8:00a The Association of Vocal Load with Vocal Pathology and Differences Across Singing Genres
Ana Flavia Zuim, PhD, Julia Gerhard, DMA, Adam Lloyd, MM, David Rosow, MD, Sheryl L. Rifas-Shiman, MPH
-
- 8:10a Can Diabetes Mellitus Lead to Voice Changes? A Systematic Review of Literature
Dhanshree R Gunjawate, PhD, Rohit Ravi, PhD, Scholar
-
- 8:20a Can the Female Voice Reveal Reproductive Cues to Males?
Filipa M.B. Lã, PhD, Nuria Polo, PhD, Svante Granqvist, PhD
-
- 8:30a Dysphonia in Performers: More Prevalent Lesions and Vocal Emergencies
Andrea Maria Campagnolo, MD, Jaqueline Priston, SLP, Valéria Leal, SLP, Aída R Assunção, MD
-
- 8:40a Dysphonia, Perceived Control, and Psychosocial Distress: A Qualitative Study
Stephanie Misono, MD, Caroline Haut, MA, Liza Meredith, PhD, Patricia A. Frazier PhD, Ali Stockness, MPH, Deirdre D. Michael, PhD, Lisa Butcher, CCC-SLP, Eileen M. Harwood, PhD
-
- 8:50a Discussion
-
- 9:00a The Utility of Pulmonary Function Testing in Patients Presenting with Dysphonia
Lisa Catanoso, BS, Kirstan Meenan, MD, Stephen Raad Stephan, MD, Julien Aoyama, BA, Ridley Chauvin, DMA, Robert T. Sataloff, MD
-
- 9:10a Impact of the Human Papillomavirus 9-Valent Vaccine on the Disease Burden of Patients with a Partial Response to the Quadrivalent Human Papillomavirus Vaccine
Lucinda Halstead, MD
-
- 9:20a The Crico-Thyroid Joint: What a Physician Should Know About This Joint
Jasmin Koch, MD, Fabian Unteregger, MD, Silke Potthast, MD, Salome Zwicky, MD, Flurin Honegger, PhD, Claudio Storck, MD
-

JUNE 2 SATURDAY 2018 AGENDA	MEDICAL SESSION IB (8:00AM - 9:50AM) CONT.	
	9:30a	Detection of Arytenoid Dislocation Using Pixel-Valued Cuneiform Movement <i>Ashley P. O'Connell Ferster, MD, Michael C. Ferster II, MS, Haley Glatthorn, BS, Bartholomew J. Bacak, PhD, Robert T. Sataloff, MD</i>
	9:40	Discussion
	9:50a	Coffee Break (Grand Ballroom, Salon III — Exhibit Hall)
	PANEL (10:10AM - 11:00AM)	
	BEYOND NODULES: CHALLENGES IN PEDIATRIC VOICE The Westin Philadelphia Hotel: Grand Ballroom Moderator: Julina Ongkasuwan, MD Panelists: Katherine Verdolini Abbott, PhD, Maia Braden, CCC-SLP Anne Hseu, MD, Estella Ma, PhD	
	11:00a	Award Presentations Chair: Robert Thayer Sataloff, MD, FACS The Westin Philadelphia Hotel: Grand Ballroom 10 th Annual Sataloff Young Investigators Award 18 th Annual David W. Brewer Award for Best Poster 12 th Annual <i>Journal of Voice</i> Best Paper Awards 7 th Annual Hamdan International Presentation Award 4 th Annual Best Student Presentation Award
	G. PAUL MOORE LECTURE (11:10AM - 12:00PM)	
	11:10a	G. PAUL MOORE LECTURE: NICOLAS MARAGOS, MD
	DOING NO HARM	
Dr. Nicolas Maragos was born and raised in Wisconsin, did his undergraduate (Chemistry) and medical school studies at the University of Wisconsin in Madison, WI, and completed residency training at the Mayo Graduate School of Medicine in Rochester, MN. He joined the Mayo Clinic Otorhinolaryngology staff upon graduation in 1977 and is an Emeritus Consultant of Otolaryngology – Head and Neck Surgery at Mayo since his retirement in 2010. Dr. Maragos' career		



began with head and neck cancer and reconstructive surgery. However, his medical life changed in 1985 when he was fortunate to hear a lecture by a future mentor, Dr. Nobuhiko Isshiki, speaking about his ideas, research, and surgical results with laryngeal framework surgery (LFS). Since then Dr. Maragos has directed or co-directed a dozen LFS cadaver dissection courses both at Mayo and with his colleagues in the Netherlands, and he continues to lecture nationally and internationally. Today's lecture seeks to analyze the increasing hazards of practicing medicine as viewed from both practitioner and patient perspectives.

**JUNE 2
SATURDAY
2018**

AGENDA

- 12:00p Lunch Break (on your own)
- Meeting of the Voice Laboratory Representatives (TBD)
- Chair: Sten Ternström
- Meeting of The Voice Foundation Local Chapters (The Board Room)

New Editor-in-Chief
M. Robb, Christchurch

Official Organ of the

International Association of
Logopedics and Phoniatrics
(IALP)

More information at
www.karger.com/fpl

KARGER

Associate Editors

Dysphagia:
S. Doeltgen,
Adelaide, S.A.

Aphasia:
P. Paquier, Brussels

Child Speech:
Y. Wren, Bristol

Child Language Disorders:
Nina Capone Singleton,
South Orange, NJ

Motor Speech Disorders:
H. Terband, Utrecht

Audiology:
E.T.W. Shehata-Dieler,
Würzburg

Fluency:
C.T. Byrd, Austin, Tex.

Voice:
M.L. Ng, Hong Kong

K118205

JUNE 2
SATURDAY
2018

AGENDA

**SPEECH-LANGUAGE PATHOLOGY SESSION IA
(1:00PM - 3:00PM)**

Chair: Claudio Milstein, PhD

The Westin Philadelphia Hotel: Grand Ballroom, Salon I

- 1:00p Vocal Care Knowledge among Speech Language Pathologists
*Dhanshree R Gunjawate, PhD, Vasudha Sharma, SLP,
Usha Devadas, PhD*
-
- 1:10p Vocal Health: Awareness and Perceptions in Undergraduate
Vocal Music and Theatre Majors
*Heather Smith, BA, Brenda Louw, D. Phil, Sun-Joo Oh, DMA,
Chaya Nanjundeswaran, PhD*
-
- 1:20p The Effect of Diagnostic Information on Ratings of Voice Severity
*Cara Sauder, CCC-SLP, Mara Kapsner-Smith, MS,
Tanya Eadie, PhD*
-
- 1:30p Student Attitudes towards Individuals with Voice Disorders
*Heather Smith, BA, Kristin Campolongo, BS,
Brianna Garretson, BS, Victoria Marley, BS, Allison Waters, BS,
Chaya Nanjundeswaran, PhD*
-
- 1:40p Vocal Quality in Musical Theater Actors
*Evelien D'haeseleer, PhD, Quintyn Fien, MS,
Iris Meerschman, MS, Kristiane Van Lierde, PhD*
-
- 1:50 Discussion
-
- 2:00p The Impact of Using an Online Auditory-Perceptual Practice Tool
(CAPTain) on SLP Student Learning
*Catherine J. Madill, PhD, Sarah Masso, PhD,
Elizabeth Murray, PhD, Alison Purcell, PhD,
Patricia McCabe, PhD*
-
- 2:10p Exercise-induced Paradoxical Vocal Fold Motion Disorder: Clinical
Features and Mechanisms
*Adrianna Shembel, PhD, Katherine Verdolini Abbott, PhD,
Christopher Hartnick, MD, Glenn Bunting, MS,
Catherine Ballif, CCC-SLP, Susan Shaiman, PhD CCC-SLP,
Vanessa de Guzman, MS*
-
- 2:20p Does Resting Respiratory Resistance Differ between Teenage
Girls With and Without Paradoxical Vocal Fold Motion Disorder?
*Andrea Pham, SLP, Sally Gallena, PhD,
Yasmeen Faroqi-Shah, PhD, Jafar Vossoughi, PhD,
Arthur T. Johnson, PhD, Nancy P. Solomon, PhD*
-

SPEECH-LANGUAGE PATHOLOGY SESSION 1A
CONTINUED

JUNE 2
SATURDAY
2018

AGENDA

2:30p Variations in Occurrence of Vocal Fry under Different Virtual Simulated Acoustic Conditions
Lady Catherine Cantor-Cutiva, PhD, Pasquale Bottalico, PhD, Eric Hunter, PhD

2:40p Discussion

3:00p **Coffee Break**
(Grand Ballroom, Salon III — Exhibit Hall)

The Voice—Fall Newsletter 2018

IS IT RESONANCE OR VOICE QUALITY?

Editor, Kim Steinhauer, PhD, Articles by
Ronald Scherer, PhD, Michelle Horman, CCC-SLP, SVS
Daniel Ihasz, MM, Elizabeth Benson, DMA

<https://voicefoundation.org/newsletters/>



JUNE 2
SATURDAY
2018

**SPEECH-LANGUAGE PATHOLOGY SESSION IB
(1:00PM - 3:00PM) CONCURRENT WITH SESSION IA**

**Chair: Ashwini Joshi, PhD
The Westin Philadelphia Hotel: Grand Ballroom, Salon II**

AGENDA

- 1:00p The Relationship between Listener Voice Quality and Pitch Discrimination Ability When Listening to Different Auditory Signals in a Self-Identified, Non-Disordered Population
Emily Wing-Tung Yun, SLP, Paul Carding, PhD, Robert Heard, PhD, Catherine J. Madill, PhD
-
- 1:10p The Relationship between Voice Quality and Pitch Discrimination Ability in a Population with Features of Mild Hyperfunction
Kin Heng Tam, BSc -SLP, Paul Carding, PhD, Robert Heard, PhD, Catherine J. Madill, PhD
-
- 1:20p Acoustic Voice Quality Index- AVQI – for Brazilian Portuguese Speakers: Analysis of Different Speech Material
Marina Englert, SLP, Lívia Lima, PhD, Ana Carolina Constantini, PhD, Ben Barsties v. Latoszek, PhD, Yuri Maryn, PhD, Mara Behlau, PhD
-
- 1:30p Phonation Quotient as a Low Cost Alternative for Estimates of Transglottal Airflow
Ashwini Joshi, PhD, Christopher Watts, PhD
-
- 1:40p Infrared Thermography as a Tool to Infer Vocal Load: A Preliminary Observation
S. Lokheshwar, ASNT IR Level II, R. Rajasudhakar, PhD, K. Ravindran, ASNT IR Level III
-
- 1:50 Discussion
-
- 2:00p Ambulatory Voice Measures During Singing and Speech in Patients With Phonotraumatic Vocal Fold Lesions Compared to Matched Controls
Jarrad Van Stan, PhD, Silvia Capobianco, Robert K. Ruggles, BS, Andrew J. Ortiz, MS, Laura E. Toles, MS, Katherine L. Marks, MS, Robert E Hillman, PhD, Daryush D. Mehta, PhD
-
- 2:10p Do Different Semi-occluded Voice Exercises Affect Differently Vocal Fold Adduction in Subjects Diagnosed with Functional Dysphonia?
Carlos Calvache, MSc, Marco Guzman, PhD, Luis Romero, SLP, Daniel Muñoz, MD, Christian Olavarria, MD, Sofia Madrid
-

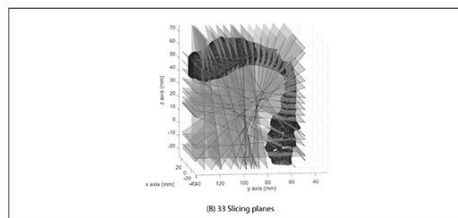
SPEECH-LANGUAGE PATHOLOGY SESSION IB, CONTINUED

**JUNE 2
SATURDAY
2018**

- 2:20p Effect of Three Semi-occluded Vocal Tract Therapy Programs on the Vocal Quality of Patients with Dysphonia: Lax Vox, Straw Phonation and Lip Trill
Iris Meerschman, MS, Kristiane Van Lierde, PhD, Charlotte Coppieters, MS, Julie Ketels, MS, Sofie Claeys, MD Evelien D'haeseleer, PhD
-
- 2:30p Immediate Effects of the Semi-Occluded Ventilation Mask on Subjects Diagnosed with Functional Dysphonia and Subjects with Normal Voices
Kharina Frisancho -Toro, MS, Lukas Salfate Velásquez, MS, Karla Lizana Muñoz, MS, Marco Guzmán, PhD, Camilo Quezada, PhD
-
- 2:40p Effects of a Variably Occluded Face Mask on the Acoustics and Aerodynamics of Connected Speech in Patients with and without Voice Disorders
Shaheen N. Awan, PhD, Jackie Gartner-Schmidt, PhD, Lauren Timmons, BM, Amanda I. Gillespie, PhD
-
- 2:50p Discussion
-
- 3:00p **Coffee Break**
(Grand Ballroom, Salon III — Exhibit Hall)
-

AGENDA

JOURNAL OF
VOICE



Official Journal of the Voice Foundation
and the International Association of Phonosurgery

VOLUME 32, No. 2 : MARCH 2018 : ISSN 0892-1997

**Included with TVF
PROFESSIONAL
MEMBERSHIP**

NATS Members

Ask us about special
NATS Members price

Institutional Access

Visit [ScienceDirect](#) or
[Clinical Key](#) to see if you
have access via your
institution.



The
Voice
Foundation

www.jvoice.org

JUNE 2
SATURDAY
2018

AGENDA

**SPEECH-LANGUAGE PATHOLOGY SESSION IA
(3:30PM - 5:10PM)**

Chair: Meike Brockman-Bausser, PhD
The Westin Philadelphia Hotel: Grand Ballroom, Salon II

- 3:30p The Effects of Stress Type, Vowel Identity, Baseline f₀, and Loudness on the Relative Fundamental Frequency of Individuals with Healthy Voices
Yeonggwang Park, BA, Cara E. Stepp, PhD
-
- 3:40p A Comparative Study of the VHI-10 and the V-RQOL for Quality of Life among Chinese Teachers with and Without Voice Disorders
Dan Lu, PhD
-
- 3:50p Correlations between Smoothed Cepstral Peak Prominence (CPPS), and Voice Activity and Participation Profile (VAPP) in Finnish Primary and Kindergarten Teachers
Caitriona Munier, MSc, Meike Brockmann-Bausser, PhD, Anne Maria Laukannen, PhD, Irma Illomaki, MS, Elina Kankare, MS, Ahmed Geneid, MD
-
- 4:00p Association of Shyness with Vocal Handicap in Professional Voice Users
Gabriela Fernandes, SLP, Thays Vaiano, SLP, Glaucya Madazio, PhD, Mara Behlau, PhD
-
- 4:10p Discussion
-
- 4:20p Longitudinal Case Study of Transgender Voice Changes under Testosterone Hormone Therapy
Gabriel J. Cler, BS, Victoria S. McKenna, MS, Cara E. Stepp, PhD
-
- 4:30p Outcomes and Special Considerations for Transgender Voice and Communication Management in the Military
Laura L. Cord, MS, Susan G. Schwabacher, CCC-SLP, Nancy Pearl Solomon, PhD
-
- 4:40p Vocal Quality and Articulation in Female Students Training to Be Speech Language Pathologists
Evelien D'haeseleer, PhD, Kristiane von Lierde, PhD, Sophia De Ley, MD
-
- 4:50p Do Your Ears Hear What Your Eyes See?
Barbara Weinrich, PhD, Wendy LeBorgne, PhD, Christopher Eanes, DMA, Stephanie RC Zacharias, PhD, Janet Beckmeyer, CCC-SLP, Alessandro de Alarcon, MD
-

SPEECH-LANGUAGE PATHOLOGY SESSION IA, CONTINUED		JUNE 2 SATURDAY 2018
5:00p	Discussion	
5:10p	Dinner Break (on your own)	
SPEECH-LANGUAGE PATHOLOGY SESSION IB (3:30PM - 5:10PM) CONCURRENT WITH SESSION IA		AGENDA
Chair: Kristiane van Lierde, PhD		
The Westin Philadelphia Hotel: Grand Ballroom, Salon II		
3:30p	The Impact of Double Source of Vibration Semiocluded Voice Exercises on Objective and Subjective Outcomes in Subjects with Voice Complaints <i>Marco Guzman, PhD, Gabriela Acuña, Fernanda Pacheco, Francisca Peralta, BA, Constanza Romero, BA, Cecilia Vergara, BA, Camilo Quezada, PhD</i>	
3:40p	maskVOX: A New Device for Voice Therapy and Vocal Training <i>Ilter Denizoglu, MD</i>	
3:50p	Kinesiology Tape as an Immediate Feedback Resource for Management of the Vertical Larynx Position <i>Pedro Amarante Andrade, PhD, Marianne Bos-Clark, SLP, Sarah Catlow, Janaina Pimenta, MS</i>	
4:00p	Effect of Whole Body Vibration on Phonatory Function: A Possible Therapeutic Technique <i>Edwin Yiu, PhD, Candy Chan, BSc, Charles Cheng</i>	
4:10p	Discussion	
4:20p	The Fake Phone Call: an iOS-based Voice Recalibration Tool. Feasibility, Usability, Utility and Preliminary Efficacy <i>Eva van Leer, PhD</i>	
4:30p	Massed versus Spaced Practice in Vocology: Effect of a Short-term Intensive Voice Therapy versus a Long-term Traditional Voice Therapy <i>Iris Meerschman, MS, Evelien D'haeseleer, PhD, Sofie Claeys, MD, Kim Bettens, PhD, Laura Bruneel, MS, Kristiane van Lierde, PhD</i>	
4:40p	Can We Create a Functional Voice-lift? What is the Effect of Vocal Warm-up Exercises on the Vocal Quality of Elderly Women? <i>Kristiane von Lierde, PhD, Iris Meerschman, Fanny Verstappen, Evelien D'haeseleer, PhD</i>	
4:50p	Discussion	
5:00p	Dinner Break (on your own)	

JUNE 2
SATURDAY
2018

AGENDA

SPECIAL SESSIONS(6:00PM - 7:40PM)

6:00p—6:50p Special Session

The Westin Philadelphia Hotel: Grand Ballroom, Salon II

**On-Site Delivery of Voice Care Services for Professional Voice Users:
Cases and Outcomes**

Aliaa Khidr, MD, Moderator

Need for ON-SITE Work Place Eval for Vocal Ergonomics

Eeva Sala, MD (Finland)

In school, Voice Care & Development for Speech Pathology Students

Aliaa Khidr (USA)

On-Site Voice Care & Development for Teachers

Fabiana Zambon, PhD (Brazil)

On-Site Voice Care & Development: Business Men & Women

Mara Behlau, PhD (Brazil)

On-Site Voice Care & Development for Television Reporters

Vanessa Pedrosa, PhD (Brazil)

In School, Voice Care & Development for Radio Reporters

Bernadette Timmermans (Belgium)

On-Site Voice Care & Development for Fitness Instructors

Anna Rumbach, PhD (Australia)

On-Site Voice Care & Development for Telemarketers

Ana Elisa Ferreira (Brazil)

6:50p—7:40p Special Session

The Westin Philadelphia Hotel: Grand Ballroom, Salon II

***Perfect Harmony: The Future of Cross-Over Singing Voice Education in
University Music Programs***

Moderator: David Meyer, DM

Irene Bartlett, DMA, Marisa Lee Naismith, MM, Kate Schirmer, MM

This panel discussion will highlight and discuss the synthesis of Contemporary Commercial Music (CCM) styles (legit and belt Musical theatre, Jazz, Pop/Rock) in three distinct programs within the same University.

**7:45 - 9:30 MASTER CLASS WITH 2018 VERA AWARDEE
SIMON ESTES**

The Westin Philadelphia Hotel: Grand Ballroom, Salon I

Reception Follows

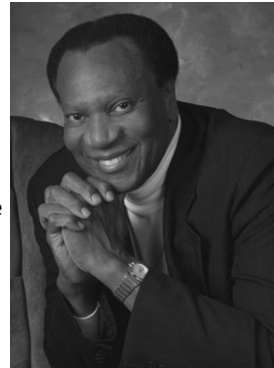
Following: Reception and SING ALONG WITH GRANT UHLE



SIMON ESTES

Internationally renowned opera star Simon Estes enjoys the ecstatic praise of music lovers around the globe. Since winning the [Bell & Ross Vintage Replica](#) Bronze Medal in Moscow's Tchaikovsky competition in 1966, he has performed with **84 major international opera companies** including the Metropolitan Opera, La Scala Milan, Lyric Opera of Chicago, the Paris Opera, Royal Opera House Covent Garden, and the State Operas of Hamburg, Munich and Vienna as well as the Zurich Opera House. He has appeared regularly with **115 orchestras**.

A native of Centerville, Iowa, Simon Estes first sang at the age of eight in the city's Second Baptist Church. While working his way through the University of Iowa as a pre-med and psychology student, he became the first black member of the University's Old Gold Singers. Simon Estes was granted a full scholarship to attend Julliard School of Music. On April 19, 1965, he made his operatic debut with the Deutsche Opera as Ramfis in Aida. Of the **over one hundred roles in his repertoire**, he is most often associated with King Phillip in Don Carlo, Wotan in Wagner's Ring cycle, Amfortas in Parsifal, King Mark in Tristan and Isolde, the four bass-baritone roles in The Tales of Hoffmann, Escamillo in Carmen, Porgy in Porgy and Bess. In the title role in Wagner's *The Flying Dutchman* he appeared triumphantly for six successive years at the Bayreuth Festival. His debut there marked the first appearance of any black male artist at this shrine to Richard Wagner.



He is Professor at Iowa State University in Ames, Iowa and at Wartburg College in Waverly, Iowa. In the past Simon was a faculty member as Professor at Boston University for five years. In his master classes, across the country and the world, Dr. Estes teaches not only music, but artistic and personal values as well.

Mr. Estes' autobiography is entitled *Simon Estes In His Own Voice*.

JUNE 3

SUNDAY, JUNE 3, 2018

SUNDAY
2018

AGENDA

7:30a Registration Opens
(Lobby outside Grand Ballroom)

MEDICAL SESSION IIA (8:00AM - 10:00AM)

Chair: Amy Rutt, DO

The Westin Philadelphia Hotel: Grand Ballroom, Salon I

8:00a Effect of Vocal Intensity on Cepstral Peak Prominence and Spectral Slope in Women with and without Voice Disorders
Meike Brockmann-Bauser, PhD, Jarrad H. Van Stan, PhD, Jörg E. Bohlender, KD MD, Daryush D. Mehta, PhD

8:10a Demographics, Risk Factors, and Co-Existing Neurologic and Vocal Fold Disorders in a Group of Patients with Spasmodic Dysphonia
Amy Rutt, DO, Selmin Karatayli-Ozgursoy, MD

8:20a Perceptual and Quantitative Assessment of Vocal Roughness across Sustained Phonations and Connected Speech
Supraja Anand, PhD, David A. Eddins, PhD, Rahul Shrivastav, PhD

8:30a Experienced Listeners Perception of Dissimilarity Within and Between Voice Categories
Molly Erickson, PhD

8:40a What Does LTAS Tell about The Voice Source?
Johan Sundberg, PhD, Gláucia Laís Salomão, PhD, K R Scherer

8:50a Discussion

9:00a Development and Validation of the Protocol for the Evaluation of the Voice of Hearing Impaired Subjects (PEV-HIS)
Ana Cristina Coelho, PhD, Alcione Ghedini Brasolotto, PhD, Fayez Bahmad Jr., MD

9:10a A Comparison of Videokymography and Electroglottogram for Measuring Contact Quotient Values in Classically Trained Singers
Richard J. Morris, PhD, David Okerlund, MM, Mary M. Gorham-Rowan, PhD, Shonda Bernadin, PhD, Elizabeth A. Farr, BS

9:20a Salivary Pepsin Test: Helpful Tool for Laryngopharyngeal Reflux Diagnosis
Luz Barona-LLeo, MD, Rafael Barona-De Guzmán, MD, Claudio Krstulovic-Roa, MD, Claudia Duval-Pastor

9:30a Effects of Angle of Epiglottis on Aerodynamic and Acoustic Parameters in Excised Canine Larynges
Yanchao Jiao, MD, Qingkai Zeng, MD, Peiyun Zhuang, MD

MEDICAL SESSION IIA (8:00AM - 10:00AM)

9:40a The Incidence of Thyroid Disease in Patients with Voice Complaints
Yolanda D. Heman-Ackah, MD, John Paul Hagerty, BA

9:50a Discussion

MEDICAL SESSION IIB (8:00AM - 10:00AM)

CONCURRENT WITH SESSION IIA

Chair: Peiyun Zhuang, MD
The Westin Philadelphia Hotel: Grand Ballroom, Salon II

8:00a Communication in Restaurants - How Much Would You Spend to Eat at this Restaurant?
Pasquale Bottalico, PhD

8:10a Detection of Muscle Tension Dysphonia using Eulerian Video Magnification
Jason Adleberg, BSE, Ashley P. O'Connell Ferster, MD, Daniel Benito, MD, Robert T. Sataloff, MD

8:20a Animal Study of Vocal Fold Repair using Glyco-Chitosan with Collagen III Fibrils
Lexi Christina Chen, B-Eng, Almoaid Rammal, MD, Neda Latifi, PhD, Huijie Wang, PhD, Nicole Yee Key Li-Jessen, PhD, Karen Kost, MD, Luc Mongeau, PhD

8:30a Vocal Fold Tissue Remodelling through Mechanotransduction by Lax Vox Therapy Case Presentation of Two Special Cases with Severe Vocal Fold Pathologies
Josef Schlömmicher-Thier, MD, Matthias Weikert, MD

8:40a Validation of Adequacy of Topical Anesthesia for Office Based Laryngeal Procedures By Green Dye: A Preliminary Study
Peak Woo, MD

8:50a Discussion

9:00a The Effect of Cricothyroid and Thyroarytenoid Muscle Botulinum Toxin Injection on Airway for Bilateral Recurrent Laryngeal Nerve Paralysis
Peiyun Zhuang, MD, Yanchao Jiao, MD, Xinlin Xu, MD

9:10a Bilateral Posterior Cricoarytenoid Myoneurectomy for Abductor Spasmodic Dysphonia
Ashley P. O'Connell Ferster, MD, Daniel A. Benito, MD, Robert T. Sataloff, MD

JUNE 3
SUNDAY
2018

AGENDA

JUNE 3
SUNDAY
2018

AGENDA

MEDICAL SESSION IIB, CONT.

- 9:20a Injection Augmentation for Benign Essential Tremor: Diagnostic Injection and Autologous Fat Results
Thomas L. Carroll, MD, Maxine Van Doren, MS, Elizabeth Faudoa, Jennifer Winston, MS, Lindsey L. Gordon, MS
-
- 9:30a Treatment and Prognosis of Closed Laryngeal Trauma with Arytenoid Injury
Weixin Cui, MD, Wen Xu, MD, Qingwen Yang MD, Xiaoyi Wang, MD,
-
- 9:40a Anatomical Study of Two Cricothyroid Approaches to the Cadaver Larynx
Haig Panossian, MD, Luke J. Pasick, BS, Robert T. Sataloff, MD
-
- 9:50a Discussion
- 10:00a Coffee Break
(Grand Ballroom, Salon III — Exhibit Hall)

PANEL (10:30AM - 11:20AM)

Vague and Vagal Throat Symptoms: How Do We Figure Them Out?

The Westin Philadelphia Hotel: Grand Ballroom

Moderator: Thomas Carroll, MD

Panelists: Maggie Kuhn, MD, Joel Portnoy, MD, Douglas F. Roth, CCC-SLP, Babak Sadoughi, MD

PANEL (11:20AM - 11:50PM)

Stroboscopy Oscars

The Westin Philadelphia Hotel: Grand Ballroom

Moderators: Michael M. Johns, MD, Eva van Leer, PhD

The Voting Academy: YOU

11:50p Lunch Break (on your own)

Meeting of the Symposium Planning Committee
(The Board Room)



NEW YORK SINGING TEACHERS ASSOCIATION

Educating Voice Professionals Worldwide Since 1906

Supports the Voice Foundation on its 47th Annual Symposium

New York Singing Teachers Association—NYSTA—events include leading figures in vocal performance, pedagogy, and health, The Great Coaches Series, Professional Development Program—live and on-line, workshops, seminars, and masterclasses, which inspire and educate those who work with the singing voice across all musical genres.

For more information about membership, professional development resources and our scholarship program, please visit our website at

www.nyst.org



The Voice—2018
Winter Newsletter

INJURED SINGERS IN VOCAL CRISIS

Articles by
Jackie Gartner-Schmidt,
PhD, CCC-SLP,
Paul E. Kwok, MD, MSc,
MM
Joan Lader, BFA, SLP
Editor, Mary Sandage,
PhD

<https://voicefoundation.org/newsletters/>

JUNE 3
SUNDAY
2018

AGENDA

VOICE PEDAGOGY IA (1:00PM—5:00PM)

Note: The American College of Surgeons does not provide CME credit for this portion of the program. ASHA provides CEU credit for this portion of the program.

Chairs: Matthew Schloneger, PhD , Eva van Leer, PhD
The Westin Philadelphia Hotel: Grand Ballroom, Salon I

- 1:00p Getting in Tune with How Singing Teachers Teach: Analyzing the One-to-One Lesson
Laura Crocco, MS, Patricia McCabe, PhD, Catherine Madill, PhD
-
- 1:10p Classical Singers' Voice Source Properties: A Longitudinal Study through Years of Higher Education
Filipa M.B. Lã, PhD, Alexander Mainka, MD, Willy Mattheus, MS, Dirk Mürbe, MD, Johan Sundberg, PhD
-
- 1:20p Inspiratory Vocal Fry: Anatomical and Physiological Aspects and Application in Speech Therapy, Vocal Pedagogy and Singing: A Pilot Study
Matteo Scalabrin, Luca Carrozza, SLP, Elisabetta Rosa, SLP, Nico Paolo Paolillo, MD
-
- 1:30p Singing in French: a Multicultural Marriage between Two Musical Systems
Jean-Yves Bosse-Vidal, MA
-
- 1:40p All Tied Up: The Effect of Wearing a Necktie on Acoustic and Perceptual Measures of Male Solo Singing
Evan Edwards, MM
-
- 1:50p Closed Vowels and Their Effect on Classically Trained Female Closed Quotient (CQegg) Values
David Okerlund, MM, Richard Morris, PhD, Shonda Bernadin, PhD
-
- 2:00p Acoustic Quantification and the Roles of Vibrato and Sound Level in Formant Tuning during the Second Passaggio of a Professional Female Singer
Richard C. Lissemore, MPhil, Kevin D. Roon, PhD, Christine H. Shadle, PhD
-
- 2:10p Discussion
-
- 2:20p Motor Learning and the Use of Feedback in the Singing Voice Studio
Colin Johnson, MM, Eva van Leer, PhD
-

VOICE PEDAGOGY IA CONT.**JUNE 3
SUNDAY
2018****AGENDA**

2:30p	The Effect of Body Awareness Training on Singers' Vocal Function and Performance <i>Ting-Yu Chen, MFA</i>
2:40p	The Effects of Visual and Auditory Learning Stimuli on the Perceived Execution of Three Sung Vocal Onsets <i>Winston Sullivan, MM, Melissa Grady, PhD</i>
2:50p	Quantifying Vocal Repertoire Tessituras Through Real-Time Measures <i>Matthew Schloneger, PhD, Eric Hunter, PhD</i>
3:00p	Novel Vocalization Model Using Human Larynx in Pyrrolidon-Embalmed Cadaver <i>Makoto Miyamoto, MD, Hideki Nakagawa, MD, Itaru Watanabe, MD, Shogo Mato, SLP, Miki Nagase, MD, George Matsumura, MD, Koichiro Saito, MD</i>
3:10p	Do Vocal Performers Maintain Training Program Post College Degree? <i>Edrie Means Weekly, MM, Linda M. Carroll, PhD, Gwen S. Korovin, MD, Rachelle Fleming, DMA</i>
3:20p	Discussion
3:30p	Accurate Measurement of Closed Quotient in the Singing Voice <i>Donald Gray Miller, PhD, C. Julian Chen, PhD, Daniel Ihasz, MM</i>
3:40p	Frequency Range Measures in Carnatic Singers <i>Madhumitha Venkataraman, MASLP, Prakash Boominathan, PhD, Aishwarya Nallamuthu, MASLP</i>
3:50p	Survey of Warm-up Practices and Perceptions among Indian Classical Singers <i>Dhanshree R Gunjawate, PhD, Rohit Ravi, PhD</i>
4:00p	Changes in Voice Quality after Pure Tone Stimulation: A Pilot Study <i>Lady Catherine Cantor-Cutiva, PhD, Maria Cristina Jackson-Menaldi, PhD, Pasquale Bottalico, PhD, Juliana Codino, MA, Eric Hunter, PhD, Adam D. Rubin, MD</i>
4:10p	Muscle Tension Dysphonia: Are Singers Getting the Help They Need? (Phase III) <i>Jeanne Goffi-Fynn, MM, Felix Graham, MA</i>
4:20p	The Utility of Vocal Function Exercises as an Adjunct Therapy for Laryngopharyngeal Reflux (LPR) Symptoms in Singers <i>Kathleen Bell, DMA Cand., David Meyer, DM, Thomas Carroll, MD</i>

**JUNE 3
SUNDAY
2018**

AGENDA

VOICE PEDAGOGY SESSION IA CONTINUED

4:30p Discussion
4:50p Closing Remarks
5:00p Adjourn

VOICE PEDAGOGY SESSION IB

**Chairs: Jeannette LoVetri, Christian Herbst, PhD
The Westin Philadelphia Hotel: Grand Ballroom, Salon I**

1:00p Longitudinal Mean and Overall Range Speaking Pitch Variation in English Cathedral Girl Choristers
David M Howard FREng, Graham F. Welch, Evangelos Himonides

1:10p The Analysis of Choral and Bel-Canto Singing with Acoustical Features and EGG Measurement
Kenta Wakasa, Hiroko Terasawa, PhD, Ken-Ichi Sakakibara, MSc, Yuzuru Hiraga

1:20p A Longitudinal Study of Intonation in a Cappella Quintet Singing
Sara D'Amario, MA, David M. Howard, PhD, Helena Daffern, PhD

1:30p A Longitudinal Study Investigating Temporal Synchronization in Singing Quintet Performances
Sara D'Amario, MA, Helena Daffern, PhD, Freya Bailes, PhD, Nicola Pennill, MA

1:40p Overview of Current Term Usage for Contemporary Commercial Music and Other Non-Classical Styles
Jeannette L. LoVetri, Jocelyn Medina, MM

1:50p Contemporary Commercial Music (CCM) Vocal Pedagogy: A Matter of Style!
Marisa Lee Naismith, MM

2:00p Pedagogical Approaches to Registration and Belting in Contemporary Commercial Singing
Elizabeth Ann Benson, DMA

2:10p Discussion

2:20p A Review of Singing Voice Subsystem Interactions
Christian T. Herbst, PhD

2:30p Toward an Extended Physiological Model of "Support"
Christian T. Herbst, PhD

2:40p Tongue-up Your Style! The Role of the Tongue and its Physioacoustic Importance for Belting
Angelika Nair, PhD

VOICE PEDAGOGY IB CONT.**JUNE 3
SUNDAY
2018****AGENDA**

2:50p	Water Resistance Therapy as Vocal Warm-Up Method in Contemporary Commercial Music Singers <i>Marcelo Saldías, SLP, Marco Guzmán, PhD, Josselyn Lizana, SLP, Gabriela Sandoval, SLP, Carla Vergara, SLP, Camilo Quezada, PhD</i>
3:00p	Contribution of the Epilaryngeal Tube Narrowing and Vocal Tract Shape on Spectral Characteristics During Twangy Belting: a Computerized Tomography Study <i>Marco Guzman, PhD, Marcelo Saldias, SLP, Gonzalo Miranda, MD, Anne-Maria Laukkanen, PhD</i>
3:10p	Aerodynamic Characteristics of Growl Voice and Reinforced Falsetto in Metal Singing <i>Karol Acevedo, Marco Guzman, PhD, Nicolas Hormazabal, Vasti Ortiz, Fernando Leiva</i>
3:20p	Discussion
3:30p	An Acoustical Comparison of Western Classical and Musical Theater Male Singers-in-Training <i>Kathy Kessler Price, PhD, Jonathan Price, MM, Joshua D. Glasner, MM</i>
3:40p	Pathology Pathways: Actors Versus Music Theatre Singers <i>Edrie Means Weekly, MM, Linda M. Carroll, PhD, Gwen S. Korovin, MD, Rachele Fleming, DMA</i>
3:50p	Redefining the Singer's Formant According to Perceptual Qualities: Singer's Formant-like Peaks in Sopranos Singing Above C5 <i>Ian Howell, DMA, Rebecca Worthington, GD</i>
4:00p	Acoustic Investigation of the Female Belt in Professional Broadway Actresses <i>Amanda Flynn, MM, Aaron M. Johnson, PhD, Jared Trudeau, MFA</i>
4:10p	Vocal Tract Resets for Professional Musical Theatre Performers - An Introduction <i>Mark Meylan, BA</i>
4:20p	The Effects of Three Heel Heights on Postural and Acoustical Measures of Male Singers <i>Amelia Rollings, PhD</i>
4:30p	Discussion
4:50p	Closing Remarks
5:00p	Adjourn

VAN L. LAWRENCE FELLOWSHIP RECIPIENTS

Lois Yadeau 1991	Jeannette Lovetri 1999	David Meyer 2010
Raquel Cortina 1992	Steven Austin 1999	Brian Gill 2011
Karen Peeler 1993	Brenda Smith 2000	Kari Ragan 2012
Lynelle F. Wiens 1993	Meribeth Bunch 2001	Bonnie Draina 2013
Kenneth Bozeman 1994	Jan Prokop 2002	Katherine Osborne 2014
Janette Ogg 1994	Katherine Eberle 2003	Filipa Martins Baptista Lã 2015
Thomas Houser 1995	Norman Spivey 2003	Matthew Hoch 2016
Sue W. Snyder 1995	Lynn Holding 2005	Matthew Edwards 2017
Ruth Golden 1996	John Nix 2006	Matthew Schloneger 2017
Freda Herseth 1997	Kathryn Barnes-Burroughs 2007	Amelia Rollings 2018
Marvin Keenze 1998	Margaret Baroody 2008	
Kathleen Wilson 1998	Donald Bell 2009	

CHAPTER LEADERS

Atlanta

Brian Petty
Marina Gilman
Adam Klein

Chicago

Jan Potter Reed
H. Steven Sims

Greater Milwaukee

Jonathan Bock
Sharon Hansan

Houston Area

Kenneth Altman
Sharon Radionoff
Jack Beetle

New England

Tom Carroll
Doug Roth
Noel Smith

North Texas

Christopher Watts
Janis Deane
Kimberly Chachere-Coker
Amy Hamilton

North Carolina

Amy Morris
Lindsay Madden
Kathryn Waugh
S. Carter Wright, Jr.

Seattle-Northwest

Albert Merati
Kari Ragan

South California

Lindsay Reeder
Karen Kochis-Jennings
Robert Dowhy

Brazil

Mara Behlau
Claudia Eckley
Deborah Feijó
Glaucya Madazio
Beth Amin
Thays Vaiano

China

Jack Jiang
Wen Xu
Peiyun Zhuang
Jun Shao

Lebanon

Abdul-latif Hamdan, MD
Aalin Nabil Sabri, M.D.
Maher Kasti, M.D.
Darine Chahoud, SLP

Mexico

Fermin M. Zubiaur
Carlos Manzano
Erika Dipp

VAN L. LAWRENCE FELLOWSHIP

Deadline: November 15, 2018

The Fellowship is open to members of the
National Association of Teachers of Singing
who are actively engaged in teaching,
have demonstrated excellence in their profession as
singing teachers, and have shown interest in and
knowledge of voice science.

For more information please contact
office@voicefoundation.org

48TH Annual SYMPOSIUM:
Care of the Professional Voice 2019
Wednesday, May 29 - Sunday, June 1, 2019

CALL FOR PAPERS AND POSTERS

Deadline: October 31, 2018

Abstracts must represent original work that has not been published elsewhere. Completed manuscripts must be submitted by the day of presentation at the Symposium and must be submitted for consideration for publication in *Journal of Voice*, unless prior arrangements have been made. There is also a New Investigators Research Forum for works in progress.

CALL FOR WORKSHOP PROPOSALS

Deadline: October 15, 2018

Voice professionals are invited to submit a proposal for a workshop to be considered for presentation at The Voice Foundation's 2019 Symposium. As you prepare your submission, please keep in mind that the focus of the workshop should be on the "live" demonstration of your techniques with singers, actors, patients, or audience members. The workshop duration is 55 minutes, and we request that you plan for the majority of the session to be spent in hands-on interaction with the participants. Be advised that workshops should be designed to be presented without the use of audiovisual aids such as overhead projectors, slide projectors, or videotapes.

VAN L. LAWRENCE FELLOWSHIP

Deadline: November 15, 2018

The Fellowship is open to members of the **National Association of Teachers of Singing** who are actively engaged in teaching, have demonstrated excellence in their profession as singing teachers, and have shown interest in and knowledge of voice science.

For more information please contact
journal@voicefoundation.org

QUINTANA AWARD

Awarded every year, the Quintana Award is given in recognition of exceptional contributions to the understanding or treatment of the voice by application of engineering principles or techniques. Appropriately-documented nominations for the Quintana Award are welcomed.

FACULTY LIST 2018

Katherine Verdolini Abbott, PhD, CCC-SLP
 Professor
 Dept. of Communication Sciences and Disorders
 University of Delaware
 Newark, DE
 (412) 983-0836
 kittie@udel.edu

Jean Abitbol, MD
 Chevalier de la Légion d'Honneur
 President of the
 International Society
 for Laser Surgery and Medicine
 Ancien Chef de Clinque
 Faculte de Medicine de Paris
 Oto-Rhino-Laryngologiste
 Phoniatre Chirurgie Laser
 Chirurgie Cervico-Facial,
 1 Rue Largilliere
 Paris, France F-75016
 +33146479189
 jean.abitbol@gmail.com
 abitbolj@noos.fr

Karol Acevedo
 Adjunct Instructor
 Dept. of Communication Sciences and Disorders
 Pontifical Catholic University of Chile
 Universidad Gabriela Mistral
 Santiago, Chile
 +5622978 6605
 karol.acevedo@uc.cl

Gabriela Acuña, BA
 Research Assistant
 Dept. of Communication Sciences and Disorders
 University of Chile
 Santiago, Chile
 gabrielaacunaalvarado@gmail.com

Philipp Aichinger, Dipl.-Ing. Dr.techn
 Research scientist
 Medical University of Vienna
 Dept. of Otorhinolaryngology
 Division of Phoniatics-Logopedics
 Graz University of Technology
 Signal Processing and Speech

Communication Lab
 +43 40400 11670
 philipp.aichinger@meduniwien.ac.at

Alessandro de Alarcon, MD, MPH
 Associate Professor
 Cincinnati Children's Hospital
 Medical Center
 (513) 636-4356
 alessandro.dealarcon@cchmc.org

Ghada Alharbi, M.Sc
 PhD Candidate
 University of Memphis
 School of Communication Sciences and Disorders
 4055 N. Park Loop
 Memphis, TN 38152 USA
 (202) 560-0881
 ggharbi@memphis.edu

Adrián Castillo Allendes, MSc, SLP
 Adjunct Instructor
 Dept. of Health Sciences
 Pontificia Universidad Católica de Chile
 (569) 8 88 55 449
 adcastilloa@uc.cl

Kimberly Nash Alexander, D. Phil., MA- SLP
 Adjunct Professor
 Oxford Graduate School
 (704) 201-9404
 drkimberlyalexander@gmail.com

Supraja Anand, PhD
 Assistant Professor
 Dept. of Communication Sciences and Disorders
 University of South Florida
 Tampa, FL
 (813) 974-3213
 suprajaanand@usf.edu

Pedro Amarante Andrade, PhD
 Lecturer in Speech and Language Therapy
 Faculty of Culture and Language Sciences
 University of St Mark & St. John
 Derriford Road, Plymouth
 Devon, PL6 8BH, UK
 +44 7152 636700
 pandrade@marjon.ac.uk

Julien Aoyama, BA
 Clinical Research Coordinator
 Children's Hospital of Philadelphia
 Division of Orthopedics
 (610) 733-7637
 julienaoyama@gmail.com

Ravikumar Arunachalam, MS (ENT),
 Professor & HOCS
 Dept. of ENT & HNS
 Sri Ramachandra University
 Medical College & Research
 Institute (Deemed University)
 Chennai, India 600116
 ravikumar.a@sriramachandra.edu.in

Aída R Assunção, MD
 Physician, Professor
 UERJ. Rua Boulevard 28 de Setembro
 77 - Vila Isabel
 Rio de Janeiro - RJ, 20551-030
 +55 21 994438525
 aidarma@yahoo.com.br

Jordan A. Awan, MS
 PhD Candidate
 Penn State University
 (570) 441-3573
 awan@psu.edu

Shaheen N. Awan, PhD
 Professor, Speech Pathology
 Bloomsburg University of PA
 Centennial Hall
 400 East Second St.,
 Bloomsburg, PA 17815-1301
 (570) 389-4443
 sawan@bloomu.edu

Bartholomew J. Bacak, PhD
 Medical Student
 Drexel University
 College of Medicine
 (215) 762-5530
 bjb87@drexel.edu

Fayez Bahmad Jr., MD, PhD
 Otolaryngologist
 College of Health Sciences
 University of Brasília
 +55 61 3328 6009
 fayezbjr@gmail.com

FACULTY LIST 2018

Freya Bailes, PhD
Academic Fellow
The University of Leeds
+44 0113 343 9708
F.Bailes@leeds.ac.uk

Catherine Ballif, MA, CCC-SLP
Voice and Speech Laboratory
Massachusetts Eye and Ear Infirmary
Boston, MA
(617) 573-4050
catherine_ballif@meei.harvard.edu

Xue Bao, BS
Graduate Student
MGH Institute of Health Professions
(607) 274-3073
xbao@mghihp.edu

Andriéli Hilário Barizão
Student
Federal University Of Technology
Paraná – Brazil
+5518 98128-2016
andrieli.h.b@gmail.com

Luz Barona-Lleo, MD, PhD
Otolaryngologist
Barona and Associates Clinic
Assistant Professor
Catholic Valencia University
Valencia, Spain
+0034676992551
luzbaronalleo@gmail.com

Rafael Barona-De Guzmán, MD, PhD
Otolaryngologist
Barona and Associates Clinic
Professor
Catholic Valencia University
Valencia, Spain
+0034676992550
rbarona@clinicabarona.com

Margaret Baroody, MM
Singing Voice Specialist
Medical Practices of
Robert T. Sataloff,
Karen Lyons, Brian McKinnon
219 N. Broad St.
Philadelphia, PA 19107
(215) 790-5195
Peggybaroody@aol.com

Paula Barson, MA
The Children's Hospital of
Philadelphia
Senior Speech Language Pathologist

(215)704-0047
barson@email.chop.edu

Ben Barsties v. Latoszek, PhD
Doctor of Medical Sciences
University of Antwerp
+32 3 265 26 39
ben.barsties@t-online.de

Irene Bartlett, DMA
Queensland Conservatorium
Griffith University
Australia
i.bartlett@griffith.edu.au

Seda Bayrak, MSc
MedicalPark Health Center
Dept. of Otorhinolaryngology – HNS
Unit of Clinical Vocology
Izmir, Turkey
+905074429914
sedabayrak@gmail.com

Janet Beckmeyer, MA, CCC-SLP
Speech-Language Pathologist
Cincinnati Children's Hospital Medical
Center
(513) 636-4982
janet.beckmeyer@cchmc.org

Mara Behlau, PhD
Speech-Language Pathologist
Director, CEV
Centro de Estudos da Voz
Rua Machado Bittencourt, 361
Vila Mariana, São Paulo, Brazil
Universidade Federal de
São Paulo
+55 11 5575-1710
mbehlau@uol.com.br

Kathleen Bell, MM
DMA Candidate
Voice Pedagogy
Shenandoah Conservatory
Adjunct Instructor of Voice
Mary Baldwin University
101 E. Frederick Street
Staunton, VA 24401
(305) 205-6815
kbell@marybaldwin.edu

Daniel A. Benito, MD
The George Washington
University
School of Medicine and Health
Science
Division of Otolaryngology –

Head & Neck Surgery
Washington, District of Columbia
(786) 287-9398
dbenito@glink.drexel.edu

Michael S. Benninger, MD
Chairman, Head and Neck Institute
The Cleveland Clinic
9500 Euclid Avenue
Cleveland, OH 44195
(216) 444-6686
benninm@ccf.org

Elizabeth Ann Benson, DMA, MM, BA
Assistant Professor of Music Theatre
Coordinator of BFA Music Theatre
Program
Auburn University
211 Telfair Peet Theatre
AL 36849
(303)570-4919
ebenson1@auburn.edu

Giédre Berretin-Félix, PhD
Professor
Speech-Language Pathology and
Audiology Dept.
Bauru School of Dentistry
University of São Paulo
Bauru, São Paulo, Brazil
+55 14 32358332
gfelix@usp.br

Larissa Cristina Berti, PhD
Speech Language Pathologist
Faculdade de Filosofia e Ciências
University Estadual Paulista
Campus Marília
Speech-Language Pathology
and Audiology Dept.
Marília (SP), Brazil
+5514998501171
berti.larissa@gmail.com

Kim Bettens, PhD
Doctor Assistant
Dept. of Speech, Language and
Hearing Sciences
Ghent University
De Pintelaan 185, 2P1,
9000 Gent, Belgium
+32 9 332 9426
kim.bettens@ugent.be

FACULTY LIST 2018

Shonda Bernadin, PhD
Associate Professor
Dept. of Electrical & Computer Engineering
Florida A&M University
Florida State University
(850)410-6393
bernadin@eng.famu.fsu.edu

Harolyn Blackwell
New York, NY 10025

Annelies Bockstael, PhD
Assistant Professor
Université de Montréal
QC, Canada
(514) 343-2082
annelies.bockstael@umontreal.ca

Jörg E. Bohlender, KD, MD
Head of Dept. of Phoniatics and
Speech Pathology
Clinic for Otorhinolaryngology Head
and Neck Surgery
University Hospital Zurich
Zurich, Switzerland
+0041 44 255 5830
joerg.bohlender@usz.ch

Prakash Boominathan, PhD
Professor
Dept. of Speech Language and
Hearing Sciences
Sri Ramachandra University
Medical College & Research Institute
(Deemed University)
Chennai, India 600116
prakash_boominathan@
sriramachandra.edu.in

Marianne Bos-Clark, CCC-SLP
Lead Speech and Language Therapist
in ENT
Royal Devon and Exeter
NHS FoundationTrust
RD&E Hospital
Barrack Road, Exeter
EX2 5DW, UK
mbos-clark@nhs.net

Jean-Yves Bosse-Vidal, MA
Singing Teacher
Researcher in Artistic Phonetics
AFPC EVTA-France
+0603024708
bossevidal@yahoo.fr

Pasquale Bottalico, PhD, MSc
Engineer
Assistant Professor
University of Illinois Urbana-
Champaign
(217) 300-0327
pb81@illinois.edu

Dick Botteldooren, PhD
Full Professor
University of Gent
Belgium
dick.botteldooren@ugent.be

Brett E. Bouma, PhD
Professor of Dermatology and
Health Sciences and Technology
Harvard Medical School
bouma@mgh.harvard.edu

Maia Braden, MS, CCC-SLP
Senior Clinical Speech Pathologist
University of Wisconsin
School of Medicine and Public Health
Dept. of Surgery
1675 Highland Ave
C225 American Family Children's Hosp
Madison, WI 53792-3284
(608) 262-3695
braden@surgery.wisc.edu

Alcione Ghedini Brasolotto, PhD
Professor
Departamento de fonoaudiologia
Faculdade de Odontologia
de Bauru
Universidade de São Paulo
+55 14 3235-8232
alcione@usp.br

Susan Baker Brehm, PhD
Dept. Chair, Professor
Dept. of Speech Pathology
and Audiology
Miami University
Oxford, OH 45056
(513) 529-2553
bakese1@miamioh.edu

Danielle Bridges, BM
Student
University of Central Arkansas
201 Donaghey Ave.
Conway, AR, 72035
(479) 252-2129
dbridges1@cub.uca.edu

**Meike Brockmann-Bauser, PhD, MSc
dipl. Klin. Log**
Professional Head of Speech
Pathology
Dept. of Phoniatics
and Speech Pathology
Clinic for Otorhinolaryngology Head
and Neck Surgery
University Hospital Zurich
Zurich, Switzerland
+41 44 255 5830
meike.brockmann-bauser@usz.ch

Laura Bruneel, MS, SLP
PhD Student
Dept. of Speech Language and Hear-
ing Sciences
Ghent University
+32 9 332 0862
laubrune.bruneel@ugent.be

Eugene H. Buder, PhD
Associate Professor
University of Memphis
School of Communication Sciences
and Disorders
4055 N. Park Loop
Memphis, TN 38152 USA
(901) 678-5853
ehbuder@memphis.edu

Bella Budlinski, MS
Research Specialist II
Dept. of Pediatrics
University of TN
Health Science Center
Memphis, TN, USA
(901) 287-7716
bella@uthsc.edu

Glenn Bunting, MS, CCC-SLP
Director
Voice and Speech Laboratory
Massachusetts Eye and Ear Infirmary
Boston, MA
(617) 573-4050
glenn_bunting@meei.harvard.edu

Lisa Butcher, MM, MA, CCC-SLP
Speech-Language Pathologist - Lions
Voice Clinic, Otolaryngology
University of Minnesota Health,
Minneapolis, MN
(612) 676-5484
Lbutcher10@umphysicians.umn.edu

FACULTY LIST 2018

Carlos Calvache, MSc
Professor
Dept. of Communication
Sciences and Disorders
Corporación Universitaria
Iberoamericana
Vocology Center
Bogotá Colombia
+57 317 5005387
carlos.calvache@
iberoamericana.edu.co

Andrea Maria Campagnolo, MD, PhD
Physician, Private Practice
Rua Visconde de Pirajá 452/207
Ipanema.
Rio de Janeiro/RJ. 22470-002
+55 21 994214122
amcampag@gmail.com

Kristin Campolongo, BS
MS Student
East Tennessee State University
Dept. of Audiology and
Speech-Language Pathology
(860) 402-7276
campolongo@etsu.edu

Michael P Cannito, PhD
Distinguished Professor
Dept. of Communicative
Disorders
University of Louisiana at Lafayette
P.O. Box 43170
Lafayette, LA USA
(337) 326-7540
mcannito@louisian.edu

**Carly S. Cantor, MS,
CCC-SLP**
Voice Pathologist
Singing Voice Specialist
Columbia University
Voice and Swallowing Center
(513) 235-3400
cc4050@cumc.columbia.edu

Silvia Capobianco
Medical Student
Università di Pavia
Giovanni Armenise Harvard
Foundation Fellow
Harvard Medical School
Research Fellow
Center for Laryngeal Surgery and

Voice Rehabilitation
Massachusetts General Hospital
silvia.capobianco01@
universitadipavia.it

Paul Carding, PhD
Professor
School of Allied Health
Faculty of Health Sciences
Australian Catholic University
Australia
+61 736 237 863
Paul.Carding@acu.edu.au

Vanessa Moraes Cardoso, MS, SLP
Speech Language Pathologist
Faculdade de Filosofia e
Ciências
University Estadual Paulista
Campus Marília
Marília (SP), Brazil
+5514996330050
van_magali@hotmail.com

**Linda M. Carroll, PhD,
CCC-SLP, ASHAF**
Research Scientist
Dept. of Otorhinolaryngology - Head
and Neck Surgery
Montefiore Medical Center
Program Director and
Professor
Graduate School
of Speech-Language Pathology
Yeshiva University
(646) 644-3379
linda.carroll@yu.edu

Thomas L. Carroll, MD
Director, Brigham and
Women's Voice Program
Brigham and Women's Hospital
Division of Otolaryngology
45 Francis Street
Boston, MA 02115
(617) 525-3000
Fax: (617) 525-6544
tcarroll@bwh.harvard.edu

Luca Carrozza, SLP
Speech-Language Pathologist
Freelancer
carrozza.luca@gmail.com

Claudia Catania
New York, NY 10023

Lisa Catanoso, BS
Voice Lab Technologist
Drexel University College of Medicine
Dept. of Otorhinolaryngology
(609) 425-8669
lisa.catanoso@gmail.com

Sarah Catlow
PhD student
Faculty of Sport, Health and Wellbeing
Plymouth Marjon University
Derriford Rd
Plymouth PL6 8BH, UK
scatlow@marjon.ac.uk

Gabrieli Cristina Santos Cercal
SLP student
Universidade Estadual
do Centro-Oeste
UNICENTRO
Irati, Paraná, Brazil
gabrieli.cercal@outlook.com

Candy Chan, BSc
Speech Therapist
University of Hong Kong
candycyp@connect.hku.hk

Ridley Chauvin, DMA, MM, BM
Assistant Professor
Applied Voice and Vocal Pedagogy
Delaware State University
(252) 368-7330
ridleysings@yahoo.com

C. Julian Chen, PhD
Adjunct Professor
Senior Research Scientist
Dept. of Applied Physics &
Mathematics
Columbia University
500 West 120 St.
New York, NY 10027
(914) 356-0027
(212) 854-8980
jcc2161@columbia.edu

**Lexi Cheiristina Chen,
BBusAdmin, BComm**
lei.x.chen@mail.mcgill.ca

Ting-Yu Chen, MFA
Dance Division Chair
Associate Dean for Student Affairs
Professor of Dance

FACULTY LIST 2018

Shenandoah Conservatory
1460 University Dr.
Winchester, VA 22601
(540) 247-8964
tchen@su.edu

Wenli Chen, MS, CCC-SLP
Mayo Clinic
5777 E. Mayo Blvd.
Scottsdale, AZ
(646) 704-8399
Wenli330@gmail.com

Charles Cheng
SLP student
University of Hong Kong
chengkahing20@gmail.com

Asim Choudhri, MD
Professor, Dept of Radiology
UTHSC
Memphis, TN 32103
(901) 287-7036
achoudhri@uthsc.edu

Sofie Claeys, MD, PhD
Professor
Dept. of Otorhinolaryngology
Head and Neck Surgery
Ghent University Hospital
Ghent, Belgium
+32 9 33226 24
sem.claeys@ugent.be
sofie.claeys@uzgent.be

Gabriel J. Cler, BS
Doctoral Candidate
Graduate Program for Neuroscience
Boston University
Boston, MA
(617) 358-1395
gcler@bu.edu

Ana Cristina Coelho, PhD, MS
Speech-Language Pathologist
College of Health Sciences
University of Brasilia
+55 61 98278 3940
anacriscoelho@yahoo.com.br

**Juliana Codino, MA, CF, SLP
PhD Candidate**
Clinical Fellow Voice Pathologist
Universidad de Buenos Aires
Lakeshore Professional Voice Center
(305) 301-5731
julianacodino@gmail.com

Austin Collum, MA, BA, SLP
Clinical Fellow
Singing Voice Specialist
Lakeshore Professional Voice Center
(256) 702-3672
jaustincollum@gmail.com

Raymond H. Colton, PhD
Professor Emeritus
Syracuse University
(315) 443-9648
rhcolton@gmail.com

Sheri Cook-Cunningham, PhD
Assist Professor of Music Education
University of Central Arkansas
201 Donaghey Ave.
Conway, AR, 72035
(501) 450-5774
scookcunningham@uca.edu

Ana Carolina Constantini, PhD, SLP
Professor
University of Campinas
Faculty of Medical Sciences
Dept. of Human Development
and Rehabilitation
+5519991992494
carolconstantini@gmail.com

Charlotte Coppieters, MS, SLP
Speech-Language Pathologist
Dept. of Speech Language and
Hearing Sciences
Ghent University
charlotte.coppieters@ugent.be

Laura L. Cord, MS, CCC-SLP
Chief
Speech-Language Pathology Clinic
Walter Reed National Military Medical
Center
(301) 319-7031
laura.l.cord.civ@mail.mil

David Corliss, PhD
Adjunct Professor of Physics and
Astronomy
Wayne State University
David.Corliss@Wayne.edu

Soledad Correa, MS
Speech Therapist
Universidade Federal de São Paulo
Botucatu 802
São Paulo, SP Brazil 04023-062
(569) 918-1078
soledad.correa.f@gmail.com

Laura Crocco, BMus (Performance)
Research Student
Master of Applied Science
Faculty of Health Sciences
The University of Sydney
75 East Street
Lidcombe, NSW Australia 2141
+437 772-2967
lcro1802@uni.sydney.edu.au

Weixin Cui, MM
Attending doctor
Dept. of Otolaryngology
Head and Neck Surgery
Beijing Tongren Hospital
Capital Medical University
+86 01013901085736
trent_cwx@163.com

Stuart Cunningham, PhD
Senior Lecturer
University of Sheffield, UK
+44 +1142222421
s.cunningham@sheffield.ac.uk

Lady C. Cantor-Cutiva, PhD, MSc, SLP
Research Associate
Department of Communicative
Sciences and Disorders
Michigan State University
(517) 505-1134
cantorcu@msu.edu

Cynthia Procópio da Silva, SLP
Speech-Language Pathology and
Audiology Department,
Bauru School of Dentistry
University of São Paulo - FOB/USP
Bauru (SP), Brazil
+551432358332
cynthia.procopio.silva@usp.br

Helena Daffern, PhD
Lecturer
University of York,
Heslington, York YO10 5DD
+44 (0)1904 322350
helena.daffern@york.ac.uk

Srihari Daggumati, BS
Medical Student
Drexel University College of Medicine
(973) 216-0453
Sd857@drexel.edu

Sophie Daigle, M.P.O
Orthophoniste

FACULTY LIST 2018

Université de Montréal
QC, Canada
sophie.daigle.1@umontreal.ca

María Eugenia Dajer, PhD
Professor
Federal University Of Technology
Paraná – Brazil
+5543 996300369
medajer@utfpr.edu.br

Pamela H. Dalton, PhD, MPH
Member, Monell Chemical Senses
Center
Philadelphia, PA 19104
(267) 519-4810
dalton@monell.org

Sara D'Amario, MA
PhD Candidate
The University of York
+44 07732 580 428
sda513@york.ac.uk

Luiz de Lacerda, PhD
Endocrinologist
Pediatric Endocrinology Unit
Dept. of Pediatrics
Permanent Professor of UFPR –
Federal University of Parana
+554132042300
llacerda@ufpr.br

Afranio de Souza de Melo, MD
Pediatrician
Endocrinology Unit
Dept. of Pediatrics
UFPR – Federal University of Parana
+554132042300
brunierefono@gmail.com

Antônio Leonardo De Paula
SLP student
Universidade Estadual
do Centro-Oeste
UNICENTRO
Iratí, Paraná, Brazil
antonioleonardodepaula@gmail.com

Dimitar D. Deliyiski, PhD
Professor and Chair
Dept. of Communicative
Sciences and Disorders
Michigan State University
(517) 353-8780
ddd@msu.edu

Ilter Denizoglu, MD, MSc
PhD candidate
MedicalPark Health Center
Dept. of Otorhinolaryngology – HNS
Unit of Clinical Vocology
Izmir, Turkey
+905424140231
ilterdenizoglu@yahoo.com

Usha Devadas, PhD
Associate Professor
Dept. of Speech and Hearing
School of Allied Health Sciences
Manipal University
Manipal, Karnataka, India

Evelien D'haeseleer, PhD
Dept. of Speech, Language,
and Hearing Sciences
Ghent University
De Pintelaan 185, 2P1
9000 Gent, Belgium
+32 9 332 24 67
evelien.dhaeseleer@ugent.be

Vanessa de Guzman, MS
Research Coordinator
Massachusetts Eye and Ear Infirmary
Boston, MA
(617) 573-3191
vanessa_deguzman@
meei.harvard.edu

Nivia Dionisio Catarino de Jesus, B.Sc.
1st year Resident
University of Campinas
Faculty of Medical Sciences
Dept. of Human Development
and Rehabilitation
+5519988143063
nicajesus@hotmail.com

Michael Döllinger, PhD
Professor
University Hospital Erlangen
Medical School
Dept. of Otorhinolaryngology – Head
and Neck Surgery
Dept. of Phoniatrics and
Pediatric Audiology
Bohlenplatz 21, 91054 Erlangen
+4991318533814
michael.doellinger@uk-erlangen.de

Richard L. Doty, PhD
Professor
Dept. of Otorhinolaryngology

Head and Neck Surgery
Director of the Smell and Taste Center
University of Pennsylvania
Perelman School of Medicine
Philadelphia, PA 19104
(215) 662-6580
richard.doty@uphs.upenn.edu

Abigail Dueppen, MM, MS
Research Assistant
Dept. of Speech and Hearing Sciences
Lamar University
Beaumont, Texas 77710
(409) 880-8338
adueppen@lamar.edu

Katie Duffy, BS
Graduate Student
Miami University
(513) 529-2500
duffykl@miamioh.edu

Kimberly Duncan, M.A., CCC-SLP
Speech-Language Pathologist/Voice
Pathologist
Columbia University Voice and
Swallowing Institute
(847) 894-5324
kad2202@cumc.columbia.edu

Megan Durham, MM, SVS, RYT-200
Lehigh University
DeSales University
& Moravian College
Voice Faculty
Affiliate of Bethlehem ENT
3445 High Point Blvd., Ste 400
(540)-521-9896
meganallison.durham@
gmail.com

Claudia Duval-Pastor
Medical Student
Catholic Valencia University
Valencia, Spain
+0034600356534
claudia.duval@mail.ucv.es

Blaire Dykes
Student
Speech and Hearing Sciences
Lamar University
Dept Speech & Hearing Sciences
211 Red Bird Lane
P.O Box 10076
Beaumont, Texas 77710
(409) 880-7591
bdykes1@lamar.edu

FACULTY LIST 2018

Tanya Eadie, PhD
 Professor
 University of Washington
 Speech and Hearing Sciences
 1417 NE 42nd St.
 Seattle, WA 98105
 (206) 616-2753
 teadie@uw.edu

Christopher Eanes, DMA
 Artistic Director
 Cincinnati Boychoir
 Artistic Director
 Collegium Cincinnati
 (513) 396-7664
 Christopher.Eanes@
 CincinnatiBoychoir.org

Abbas Ebadi

David A. Eddins, PhD, CCC-A
 Professor
 Dept. of Communication
 Sciences and Disorders
 University of South Florida
 Tampa, FL
 (813) 974-4094
 deddins@usf.edu

Evan Edwards, MM
 Graduate Teaching Assistant
 University of Kansas
 Vocal/Choral Pedagogy Research
 Team
 (816) 721-0566
 evanucm@ku.edu

Marina Englert, PhD Student
 Speech Language Pathologist
 Unifesp - Federal University of Sao
 Paulo and CEV -
 Centro de Estudos da Voz
 +55 11 9 83669794
 marinaenglert@gmail.com

Mary (Molly) Erickson, PhD
 Associate Professor
 University of Tennessee Health
 Science Center
 Dept. of Audiology and Speech
 Pathology
 528 South Stadium Hall
 Knoxville, TN, 37996
 (865) 974-9895
 merickso@uthsc.edu

Simon Estes
 Opera Star, Professor, Iowa State U.

**Eliana Maria Gradim
 Fabron, PhD, SLP**
 UNESP - University
 Estadual Paulista Campus Marília
 Speech-Language Pathology and
 Audiology Dept.
 Marília (SP), Brazil
 +5514981159368
 elianaf@marilia.unesp.br

Rinaldo de Jesus Guirro, PhD
 Physiotherapist
 Professor
 Dept. of Biomechanics
 Medicine and Locomotor Apparatus
 Rehabilitation
 University of São Paulo
 Ribeirão Preto - FMRP/USP
 Ribeirão Preto (SP), Brazil
 +551432358332
 rguirro@fmrp.usp.br

**Congeta Bruniere Xavier Fadel, MD,
 SLP, PhD student**
 Speech Pathologist
 UFPR – Federal University of Parana
 +5541998897041
 congetabxf@gmail.com

Yasmeen Farooqi-Shah, PhD, CCC-SLP
 Associate Professor
 Dept. of Hearing and Speech Sciences
 University of Maryland
 College Park
 (301) 405-4229
 yfshah@umd.edu

Elizabeth A. Farr, BS
 Graduate Student
 School of Communication Science and
 Disorders
 Florida State University
 (850) 644-2238
 eaf12d@my.fsu.edu

Elizabeth Faudoa
 Research Volunteer
 Undergraduate Student
 Brigham and Women's Hospital
 (617) 525-3000
 efaudo@gmail.com

**Murillo Augusto Fermينو,
 MSc Candidate**
 São Carlos School of Engineering
 University of São Paulo
 murillo.fermino@gmail.com

Janet Madelle Feindel, MFA
 Professor, Voice/Alexander Technique
 Carnegie Mellon University
 School of Drama, Purnell Center
 Pittsburgh, PA 15213
 (412) 977-0732,
 janfein@aol.com

Ashley P. O'Connell Ferster, MD
 Resident Physician
 Dept. of Surgery
 Division of Otolaryngology
 Head & Neck Surgery
 Penn State Health
 Milton S. Hershey Medical Center
 (717) 531-8945
 ashleyoconn@gmail.com

Michael C. Ferster II, MS
 Senior Software Developer
 Dept. of Otolaryngology
 Head & Neck Surgery
 Drexel University
 College of Medicine
 (215) 762-5530
 mferster2@gmail.com

Quintyn Fien, MS, SLP
 Speech-Language Pathologist
 Dept. of Speech Language and
 Hearing Sciences
 Ghent University
 Fien.Quintyn@ugent.be

Brian Flaherty Esq.
 Cozen O'Connor
 1900 Market St.
 Philadelphia, PA 19103
 bflaherty@cozen.com

Rachelle Fleming, DMA
 Clinical Assistant Professor
 Musical Theatre Division
 Benjamin T. Rome School of Music
 The Catholic University of America
 620 Michigan Ave NE
 Washington, DC 20064
 (917) 803-5441
 smeraldina@live.com

W. Tecumseh Fitch, PhD
 Professor of Cognitive Biology
 Dept. of Cognitive Biology,
 University of Vienna
 ++43 1 4277 76111
 tecumseh.fitch@univie.ac.at

FACULTY LIST 2018

Amanda Flynn, MM
CAS in Vocal Pedagogy
Certificate in Vocology
Adjunct Professor
Pace University
(347) 531-7177
aflynn@pace.edu

Maria Claudia Franca, PhD, CCC-SLP
Associate Professor
Communication Disorders
and Sciences
Rehabilitation Institute
Southern Illinois University -
Carbondale
(618) 453-8292
franca@siu.edu

Patricia A. Frazier, PhD
Associate Chair, Distinguished
McKnight University Professor
Department of Psychology
University of Minnesota
Minneapolis, MN 55455
(612) 625-6863
pfraz@umn.edu

Claudia Friedlander, DMA
Voice Teacher & Fitness Trainer
Weill Music Institute of Carnegie Hall
154 W. 57th St.
New York, NY 10019
(646) 543-2361
clf1@jhu.edu

Letícia de Lemos Freixo, SLP
Master Student
University of São Paulo
Bauru School of Dentistry
Speech-Language Pathology and
Audiology Department
Bauru/São Paulo/Brazil
+55(14)32358232
contato@leticiafreixo.com

Diane Gaary, MFA
Associate Professor
Temple University
Philadelphia, PA
Arcadia Univ, Glenside, PA
Westminster Choir College
Princeton, NJ
(610) 608-2237
Dgaary@aol.com

Sally Gallena, PhD, CCC-SLP
Assistant Professor
Loyola University Maryland

Columbia, MD
(410) 617-7676
sgallena@loyola.edu

Brianne Garretson, BS
MS Student
East Tennessee State University
Dept. of Audiology and
Speech-Language Pathology
(937) 409-7786
garretsonb@etsu.edu

Jackie Gartner-Schmidt, PhD
Professor
University of Pittsburgh
Voice Center
1400 Locust St. Building B
Suite B11500
Pittsburgh, PA 15219
(412) 232-8970
jgs@pitt.edu

Ahmed Geneid, MD
Otolaryngologist
Head of Phoniatrics and Speech
Pathology
Dept. of Otolaryngology and
Phoniatrics
University of Helsinki Hospital
Helsinki, Finland
ahmed.geneid@hus.fi

Hamzeh Ghasemzadeh, MSc
PhD Student
Dept. of Communicative Sciences and
Disorders
Michigan State University
ghasemza@msu.edu

Sophia Ghys, SLP
Master's Student
Dept. of Speech, Language,
and Hearing Sciences
Ghent University
De Pintelaan 185, 2P1
9000 Gent, Belgium
Sophia.ghys@ugent.be

Amanda I. Gillespie, PhD
Assistant Professor
University of Pittsburgh
Voice Center
1400 Locust St. Building B
Suite 11500H
Pittsburgh, PA 15219
(412) 232-8970
gillespieai@upmc.edu

Marina Gilman, MM, MA, CCC-SLP
Speech Language Pathologist
Emory Voice Center
Dept. of Otolaryngology
Head and Neck Surgery
Emory University
(404) 444-4647
marina.gilman@emoryhealthcare.org

Haley Glatthorn, BS
Medical Student
Drexel University
College of Medicine
(215) 762-5530
hglatthorn@gmail.com

**Joshua D. Glasner, MM
PhD Candidate**
Certificate of Vocology
Adjunct Professor of Voice
New York Univ
(239) 896-0339
jdgglasner@gmail.com

Maude Grégoire, MPO
Orthophoniste
Université de Montréal
QC, Canada
maude.gregoire.1@umontreal.ca

Dhanshree R Gunjawate, PhD, MASLP
Assistant Professor
Dept. of Audiology and
Speech Language Pathology
Kasturba Medical College Mangalore
Manipal Academy of Higher Education
Manipal, Karnataka, India
+9008778259
dhanshreeg@yahoo.co.in

Maxime Garcia, PhD
Post-doctoral researcher
ENES Lab
Université Lyon/Saint-Etienne
Neuro-PSI, CNRS UMR 9197
23 rue du Dr. Paul Michelon
42023 Saint-Etienne, France
+33 782 251 290
maxime.garcia@ymail.com

Kharina Frisancho -Toro, MS, CCC-SLP
Speech-Language Pathologist
Dept. of Education
University of San Agustín,
Arequipa, Perú
+011 51 992 968 342
kharinaf@gmail.com

FACULTY LIST 2018

Julia Gerhard, DMA
Florida Hospital
(305) 243-4315
juliagerhard@gmail.com

Jeanne Goffi-Fynn, EdD, MM
Director – Doctoral Cohort Program
Senior Lecturer in Music
Teachers College
Columbia Univ
525 West 120th Street
New York, NY 10027-6696
(212) 678-3450
jcg21@tc.columbia.edu

Nury Gonzalez
Speech-Language Pathologist
Universidad de Valparaíso
Camino la Troya
sin numero, San Felipe, Chile
nurgamboa@gmail.com

Lindsey L. Gordon, MS, CCC-SLP
Senior Speech and Language
Pathologist
Brigham and Women's Hospital
(617) 525-3000
llgordon@bwh.harvard.edu

Mary M. Gorham-Rowan, PhD
Professor
Dept. of Communication Sciences and
Disorders
Valdosta State University
(229) 219-1327
mmgorhamrowan@valdosta.edu

Renee Gottliebson, PhD, CCC-SLP
Clinical Faculty
Director of Voice Lab
Dept of Speech Pathology
and Audiology
Miami University
2 Bachelor Hall
Oxford, OH 45056
(513) 529-7430
gottlirc@miamioh.edu

Melissa Grady, PhD
Assistant Professor of Music
Education
Vocal/Choral Pedagogy Research
Group
Kansas University
(316) 640-5282
mlgrady@ku.edu

Felix Graham, MA
Doctoral Candidate
Columbia University
Teachers College
Music and Music Education
525 West 120th Street
New York, NY 10027-6696
(347) 236-5927
fag2104@tc.columbia.edu

Svante Granqvist, PhD
Associate professor
Division of Speech and
Language Pathology
Dept. of Clinical Science
Intervention and Technology
(CLINTEC)
Karolinska Institutet (KI)
Stockholm, Sweden
Basic Science and Biomedicine
School of Technology and Health
(STH)
Royal Institute of Technology (KTH)
Stockholm, Sweden
Hälsövägen 11C
141 57 Huddinge, Sweden
+46-8-790 9470
sbg@kth.se

Marco Guzman, PhD
Assistant Professor
Dept. of Communication
Sciences and Disorders
University of Chile
Dept. of Otolaryngology
Las Condes Clinic
Santiago, Chile
(562) 2978 6605
guzmann.marcoa@gmail.com

John Paul Hagerty, BA
Philadelphia Voice Center
Bala Cynwyd, PA
St. Joseph's University
Philadelphia, PA
(267)407-8795
hagerty.jp@gmail.com

Fran Hagstrom, PhD
Assistant Dean
University of Arkansas
(479) 575-4910
fhagstro@uark.gmail.edu

Angela Halpern, MS, CCC-SLP
LVST Global
Chief Clinical Officer

LSVT LOUD Faculty
(720) 838-3093
angela.halpern@lsvtglobal.com

Lucinda Halstead, MD
Associate Professor
Medical Director
Evelyn Trammell Institute for Voice &
Swallowing
Dept. of Otolaryngology HNS
Medical University of South Carolina
MUSC 550
135 Rutledge Ave
Charleston, SC 29425
(843) 568-5167
halstead@musc.edu

**Abdul-latif Hamdan, MD, EMBA,
MPH, FACS**
Professor
American University of Beirut
Hamra, P.O.Bx: 110236
Beirut, Lebanon
+9611350000
ah77@aub.edu.lb

Vit Hampala, PhD
Voice Research Lab
Dept. Biophysics
Faculty of Science
Palacký
+420 58 563 4151
vit.hampala@gmail.com

Edie R. Hapner, PhD, CCC-SLP
Professor, Tina and Rick Caruso Dept.
of Otolaryngology Head and Neck
Surgery
KECK Medicine of USC
Speech Language Pathologist
USC Voice Center
(323) 865-9839
Fax: (323) 442-2059
ehapner@usc.edu

Monica Harn, PhD, CCC-SLP
Professor, Chair
Dept. Speech and Hearing Sciences
Lamar University
Beaumont, Texas 77710
(409) 880-8338
mlharn@lamar.edu

Christopher Hartnick, MD
Chief
Division of Pediatric Otolaryngology
Massachusetts Eye and Ear Infirmary
Boston, MA

FACULTY LIST 2018

(617) 573-3191
christopher_hartnick@
meei.harvard.edu

Eileen M. Harwood, PhD
Associate Professor
School of Public Health
Division of Epidemiology and
Community Health
University of Minnesota - Twin Cities
Room 381 West Bank Office Building
(WBOB)
1300 South Second Street
Minneapolis MN 55454
Office (612) 626-1824
harwo002@umn.edu

Caroline Haut, MA, LADC
Research Coordinator, Psychiatry
University of Minnesota
Minneapolis, MN
(612) 626-6812
hautx009@umn.edu

Mary J. Hawkshaw, BSN, RN, CORLN
Research Professor
Dept. of Otolaryngology
Head and Neck Surgery
Drexel University
College of Medicine
Philadelphia, Pennsylvania

Yoshiyuki Hayashi, SLP
Speech Pathologist
Dept. of rehabilitation
Kyorin University Hospital
Tokyo, Japan

Robert Heard, PhD
Senior Lecturer
The University of Sydney
rob.heard@sydney.edu.au

**Karen Wheeler Hegland, PhD,
CCC-SLP**
Assistant Professor
Dept of Speech, Language,
and Hearing Sciences
Dept. of Neurology
University of Florida
Gainesville, FL 32611
(352) 294-8366
kwheeler@ufl.edu

Yolanda D. Heman-Ackah, MD, MS
Clinical Professor
Philadelphia Voice Center

Drexel University
College of Medicine
Dept. of Otolaryngology-
Head and Neck Surgery
(484)270-8095
ydhemanackah@aol.com

Christian T. Herbst, PhD, Mag. art
Post-doctoral researcher
Bioacoustics Laboratory
Dept. of Cognitive Biology
University of Vienna
University Olomouc
+431427776101
herbst@ccrma.stanford.edu

Robert E. Hillman, PhD
Professor
Dept. of Surgery
Massachusetts General Hospital
Harvard Medical School
hillman.robert@mgh.harvard.edu

Evangelos Himonides
University College
London Institute of Education, UK
e.himonides@ioe.ac.uk

Yuzuru Hiraga
Dean and Professor
College of Media Arts
Science and Technology
School of Informatics
Music Informatical Science Lab
University of Tsukuba
1-2 Kasuga, Tsukuba
Ibaraki, 305-8577 Japan
hiraga@slis.tsukuba.ac.jp

Flurin Honegger, PhD
University Hospital Basel
ENT - Dept.
Petersgraben 4
4031 Basel, Switzerland
+41-61-265-25-25
flurin.honegger@usb.ch

Nicolas Hormazabal
Instructor
Baume Academy
Santiago, Chile

**Carly Jo Hosbach-Cannon, PhD,
CCC-SLP**
Assistant Professor
Ithaca College
953 Danby Rd

Ithaca, NY 14850
(607) 274-3073
chosbachcannon@ithaca.edu

David M. Howard, FEng, PhD, BSc
Head of Dept.
Dept. of Electronic Engineering
Royal Holloway
University of London
+447766232928
david.howard@rhul.ac.uk

Ian Howell, DMA, MMus
Professor
Voice and Vocal Pedagogy
Vocal Pedagogy Director
New England Conservatory of Music
290 Huntington Ave.
Boston, MA 02115
(203) 843-4216
ian.howell@necmusic.edu

Anne Hseu, MD
Associate in Otolaryngology
Boston Children's Hospital
Instructor
Harvard Medical School
(617) 355-6462

Eric Hunter, PhD
Associate Professor
Comm. Sciences & Disorders
Michigan State University
1026 Red Cedar Road, #113
East Lansing, MI, 48824
(517) 884-6778
ejhunter@msu.edu

Walt Hunter
Investigative reporter
KYW-TV, CBS Philly
wejhunter@gmail.com

Kristine Hurst-Wajszczuk, DMA
Vocal Performance and Pedagogy
University of Alabama at Birmingham
HC 249
1720 2nd Avenue South
Birmingham, AL 35294-1260
(205) 934-8906
(205) 306-6093
khw@uab.edu

Daniel Ihasz, MM, BM
Professor of Vocal Studies
State University of New York

FACULTY LIST 2018

Fredonia, NY 14063
(716) 673-5499
Daniel.lhasz@fredonia.edu

Irma Illomaki, MS, SLP
Head of Speech Pathology
Speech and Voice Research
Laboratory
School of Education
University of Tampere
Tampere, Finland
irma.illomaki@staff.uta.fi

Gonzalo Inostroza, BA, SLP
Speech Therapist, Professor
Department of Voice
Mayor's University and Professional
Institute of Chile
+569-99097684
gonzalo.inostroza.moreno@
gmail.com

Tsubasa Ishii, SLP
Speech Pathologist
Dept. of rehabilitation
Kyorin University Hospital
Tokyo, Japan

Farzad Izadi

Maria Cristina Jackson-Menaldi, PhD
Voice Pathologist
Lakeshore ENT, P.C.
21000 Twelve Mile Road
St. Clair Shores, MI 48081
Adjunct Professor
School of Medicine
Dept. of Otolaryngology
Wayne State University
(586) 779-7610
jmenaldi@wayne.edu
mcmenaldi@gmail.com

Narges Jafari
PhD Student
Dept. of Speech, Language and
Hearing Sciences
Ghent University
De Pintelaan 185, 2P, 9000
Gent, Belgium

Bandini Jayasena, BSc, SLP
Audiologist
Speech Language Pathology and
Audiology
India
+94716342674
bandinij6@gmail.com

Yanchao Jiao, MD
Otolaryngologist
Dept. of Otolaryngology
Xiamen University
Zhongshan Hospital
Fujian, China
jiaoyc_2000@sina.com

Michael M. Johns, III, MD
Director - USC Voice Center
1540 Alcazar Street
Suite 204M
Univ. of Southern California
Los Angeles, CA 90033
(404) 686-7797
michael.johns@med.usc.edu

**Aaron M. Johnson, PhD, MM,
CCC-SLP**
Assistant Professor
New York University Voice Center
(646) 754-1207
aaron.johnson@nyumc.org

Arthur T. Johnson, PhD
Professor Emeritus
Fischell Dept. of Bioengineering
University of Maryland
College Park, MD
(301) 405-1184
artjohns@umd.edu

Colin Johnson, MM
Voice Ped DMA student
Shenandoah Conservatory
1460 University Drive
Winchester, VA 22601
(203) 675-2926
cjohnson132@su.edu

Tamekia L. Jones, PhD
Director, Biostatistics Core
Children's Foundation Research Inst
Associate Professor
Department of Pediatrics and
Department of Preventive Medicine
University of Tennessee Health
Science Center
50 North Dunlap, Room 476R
Memphis, TN 38103
tjone100@uthsc.edu

Ashwini Joshi, PhD
Assistant Professor
Dept. of Communication Sciences and
Disorders
University of Houston
Houston, TX

(713) 743-6136
ajoshi4@uh.edu

Samanthi Kalupahana, Bsc, SLP
Speech and Hearing Sciences
Dept. of Disability Studies
University of Kelaniya, Sri Lanka
+94714893518
samanthi_kalupahana@hotmail.com

Elina Kankare, MS, SLP
Speech Pathologist
Speech and Voice Research
Laboratory
School of Education
University of Tampere
Tampere, Finland
eliina.p.kankare@pshp.fi

Mara Kapsner-Smith, MS
Lecturer
University of Washington
Speech and Hearing Sciences
1417 NE 42nd St.
Seattle, WA 98105
(206) 616-2753
mkapsner@uw.edu

Selmin Karatayli-Ozursoy, MD
Research Fellow
Otolaryngology Department
Mayo Clinic Jacksonville
(904) 508-3149
Karatayli-ozursoy.selmin@mayo.edu

Richard T. Kelley, MD
Associate Professor
SUNY Upstate Medical University
(315) 443-9648
kelleyr@upstate.edu

Julie Ketels, MS, SLP
Speech-Language Pathologist
Dept. of Speech Language and
Hearing Sciences
Ghent University
julie.ketels@ugent.be

Boris Alexander Kleber, PhD
Assistant Professor
Aarhus University
Dept. of Clinical Medicine - Center for
Music In the Brain
Nørrebrogade 44b
Building 10G AUH
8000 Aarhus C
Denmark
boris.kleber@clin.au.dk

FACULTY LIST 2018

Jasmin Koch, MD
University Hospital Basel, ENT - Dept.
Petersgraben 4, 4031 Basel,
Switzerland
+41-61-265-25-25
jasmin.koch@stud.unibas.ch

Gwen S. Korovin, MD
Clinical Assistant Professor
New York University
School of Medicine
Attending Physician
Lenox Hill Hospital
70 East 77th Street Suite 1B
New York, NY 10075 U.S.A.
(212) 879-6630
GKorovin@aol.com

Karen M. Kost, MD, FRCSC
Otolaryngologist
McGill University Health Center
Montreal, Canada
(514) 934-1934, ext 42674
kmkost@mcgill.ca

Lisa M. Kopf, PhD, CCC-SLP
Assistant Professor
Dept. of Communication Sciences and
Disorders
University of Northern Iowa
(319) 273-2565
lisa.kopf@uni.edu

Lívia Lima Krohling, PhD
Adjunct Professor
Universidade Vila Velha (UVV)
PhD Candidate - (UNIFESP)
+55 (27)99901-4605
livialima.r@ig.com.br

Claudio Krstulovic-Roa, MD, PhD
Otolaryngologist
Barona and Associates Clinic
Valencia, Spain
+0034648490968
claudio.krstulovic@outlook.com

Maggie Kuhn, MD
Assistant Professor of Otolaryngology
UC Davis
Center for Voice and Swallowing
Sacramento, California
makuhn@ucdavis.edu

Darby Kunnemann, BSE
Graduate Student
Georgia State University

Graduate Research Assistant
(678) 910-6149
dkunnemann1@student.gsu.edu

Filipa M.B. Lã, PhD
Researcher
Centre for Social Sciences
University of Coimbra
Institute for Interdisciplinary Research
University of Coimbra, Portugal
Colégio de S. Jerónimo
Largo D. Dinis
Apartado 3087
3000-995 Coimbra, Portugal
+351 917646702
filipala@ces.uc.pt

Neda Latifi, PhD Student
Graduate Research Assistant
McGill University
neda.latifialavijeh@mail.mcgill.ca

Anne-Maria Laukkanen, PhD
Professor
Speech and Voice Research
Laboratory
School of Education
University of Tampere
Tampere, Finland
anne-maria.laukkanen@uta.fi

Valéria Leal, SLP
Speech-Language Pathologist
Private Practice
Rua Garcia D'Avila 64. Ipanema
Rio de Janeiro/RJ. 22421-010.
+55 71981147119
valeria-leal@uol.com.br

Wendy LeBorgne, PhD, CCC-SLP
Clinical Director/Voice Pathologist/
Singing Voice Specialist
College Conservatory of Music
OMDA/Musical Theatre
University of Cincinnati
Cincinnati, OH 45221
(937) 496-2622
wleborgne@soents.com

Leslie Ledee-Lozada, MS, CCC-SLP
Clinical Doctoral Candidate
Rocky Mountain University
(787)485-2676
ledepr@yahoo.com

Mark S. LeDoux, MD
Professor
Dept. of Neurology

UTHSC, Memphis
TN USA 38103
(901) 448-1662
mledoux@uthsc.edu

Carla LeFevre, DMA
Doctor of Musical Arts
Professor of Music, School of Music
Music Building
University of North Carolina at
Greensboro
Greensboro, NC 27412
(336) 202-5057
carlalefevre@aol.com

Zhengdong Lei, MEng
PhD Student
McGill University
Dept. of Mechanical
Engineering
Montreal, QC, Canada
(514) 581-6812
zhengdong.lei@mail.mcgill.ca

Ana Paula Dassie Leite, PhD, SLP
Speech Pathologist
Permanent Professor of UNICENTRO
University of Centro-Oeste,
+554236211000
pauladassie@hotmail.com

Fernando Leiva
Assistant Professor
Dept. of Communication Sciences and
Disorders
Univesidad Pedro de Valdivia
Santiago, Chile

Nicole Yee-Key Li-Jessen, PhD
Assistant Professor
McGill University
School of Communication Sciences
and Disorders
Montreal, QC, Canada
(514) 398-5933
nicole.li@mcgill.ca

**Richard C. Lissemore, M.Phil, MM,
BA**
PhD Candidate
The Graduate Center at
The City University of New York
365 Fifth Avenue
New York, NY 10016
(917) 969.0506
rlissemore@gradcenter.cuny.edu

FACULTY LIST 2018

Marquita Lister, MM
 Coordinator
 Vocal Studies Program
 Morgan State University
 2201 Argonne Drive
 Baltimore, Maryland 21251
 (240) 432-7991
 Lister1408@aol.com

Josselyn Lizana, SLP
 School of Speech and Language
 Pathology
 SEK University
 Santiago, Chile

Adam Lloyd, MM, MA, CCC-SLP
 Speech-Language Pathologist
 Singing Health Specialist
 Dept. of Otolaryngology
 University of Miami
 Miller School of Medicine
 1120 NW 14th Street, 727
 Miami, FL 33126
 407-539-5619
 adam.lloyd@med.miami.edu

S. Lokheshwar
 ASNT IR Level II
 Research Officer
 Dept. of Speech-Language Sciences
 All India Institute of Speech and
 Hearing
 Mysore-570006
 Karnataka, India

Leonardo Lopes, PhD
 Speech Language Pathologist
 Permanent Professor of UFPB
 Federal University of Paraiba
 +55 83 3216-7831
 lwlopes@hotmail.com

Brenda Louw, D. Phil.
 Professor and Chair
 Dept. of Audiology and
 Speech-Language Pathology
 East Tennessee State University
 (423) 439-4315
 louwb1@etsu.edu

Jeannette L. LoVetri
Director
 The Voice Workshop
 New York, NY 10025
 (212) 662-9338
 (917) 715-1655 (Mobile)
 lovetri@thevoiceworkshop.com

Soren Y. Lowell, PhD, CCC-SLP
 Associate Professor
 Syracuse University
 (315) 443-9648
 slowell@syr.edu

Dan Lu, PhD
 West China Hospital
 Sichuan University
 +0860288542
 dashijie001@163.com

Jorge Lucero, PhD
 Professor, Engineer
 UnB – University of Brasilia
 +55 61 3107-3678
 lucero@unb.br

Estella Ma, PhD, PM
 Associate Professor
 Voice Research Laboratory
 Division of Speech and Hearing
 Sciences,
 The University of Hong Kong
 7/F Meng Wah Complex
 Pok Fu Lam, Hong Kong
 +852 39177625
 estella.ma@hku.hk

Glaucya Madazio, PhD, SLP
 Voice Specialist
 CEV – “Centro de Estudos da Voz”,
 UNIFESP
 Brazil
 +55 11 55751710
 glaumadazio@uol.com.br

Catherine Madill, PhD, BAppSc., CPSP
 Senior Lecturer
 Speech Pathology
 Faculty of Health Sciences
 University of Sydney
 75 East Street
 Lidcombe, NSW2141
 Australia
 +61293519692
 cate.madill@sydney.edu.au

Sofia Madrid
 Research Assistant
 Dept. of Communication Sciences and
 Disorders
 University of Chile
 Santiago, Chile
 smadrid@ug.uchile.cl

H. K. C. Madushani, BSc, SLP
 Speech and Hearing Sciences
 Dept. of Disability Studies
 Faculty of Medicine
 University of Kelaniya
 +94771005643
 90chandika@gmail.com

Shenbagavalli Mahalingam, MA, SLP
 PhD student & Senior Lecturer
 Dept. of Speech Language and
 Hearing Sciences
 Sri Ramachandra University
 Chennai, India 600116
 shenbagavalli.mahalingam@
 sriramachandra.edu.in

Alexander Mainka, MD
 Medical Doctor
 Division of Phoniatrics and Audiology
 Dept of Otorhinolaryngology
 University Hospital Carl Gustav Carus
 Technical University Dresden
 Germany
 +49 351 458 7045
 alexander.mainka@
 uniklinikum-dresden.de

Celina Malebran, SLP
 Universidad Santo Tomás
 Viña del Mar, Chile
 celinamalebranbmello@gmail.com

Vinaya Manchaiah, AUD, PhD, MBA
 Associate Professor
 Dept. Speech and Hearing Sciences
 Lamar University
 Beaumont, Texas 77710
 (409) 880-8338,
 vmanchaiah@lamar.edu

Maria Conceição Manso, PhD, MSc
 Professor, Health Sciences Faculty
 Universidade Fernando Pessoa
 Fernando Pessoa Energy
 Environment and Health Research
 Unit (FP-ENAS)
 University Fernando Pessoa
 LAQV, REQUIMTE
 University of Porto
 Oporto, Portugal
 +351 918 829 503
 cmanso@ufp.edu.pt

FACULTY LIST 2018

Victoria Marley, BS
MS Student
East Tennessee State University
Dept. of Audiology and
Speech-Language Pathology
(845) 270-3289
marleyv@etsu.edu

Viviane Cristina de Castro Marino, PhD
Speech Language Pathologist
Faculdade de Filosofia e Ciências
University Estadual Paulista
Campus Marília
Speech-Language Pathology
and Audiology Dept.
Marília (SP), Brazil
+5514997214313
vivianemarinoo2@yahoo.com.br

Katherine L. Marks, MS, CCCC-SLP
Center for Laryngeal Surgery &
Voice Rehabilitation
Massachusetts General Hospital
MGH Institute of Health Professions
Boston, MA 02114
(617) 643-8409
kmarks@mghihp.edu

Javiera Castillo Martínez, SLP
Adjunct Instructor
Science Faculty
Universidad Mayor
Santiago, Chile
javiera.castillo@mayor.cl

Youri Maryn, PhD
Logopedist – vocoloog
Bachelor in logopedie en audiologie
University of Antwerp
+32 3 265 26 39
yourimaryn@vvl.be

Sarah Masso, PhD
Lecturer
Discipline of Speech Pathology
Faculty of Health Sciences
University of Sydney
Australia
+61 2 9351 9881
sarah.massosydney@sydney.edu.au

Shogo Mato, SLP
Speech Pathologist
Dept. of Rehabilitation
Kyorin University Hospital
ma_shogo_0620@ks.kyorin-u.ac.jp

George Matsumura, MD, PhD
Professor
Kyorin University School of Medicine
Japan
george@ks.kyorin-u.ac.jp

Willy Mattheus, MS
Research Assistant
Universitätsklinikum Carl Gustav
Carus
Technischen Universität Dresden
Willy.Mattheus@uniklinikum-dresden.de

Patricia McCabe, PhD, BAppSc(SLP) (Hons), CPSP
Associate Professor
Speech Pathology
Faculty of Health Science
The University of Sydney
75 East Street
Lidcombe, NSW Australia 2141
+61 2 9351 9747
tricia.mccabe@sydney.edu.au

Diego Henrique C. Martinho
Graduating Speech and Hearing
Pathologist
University of Campinas Speech and
Hearing Pathologist School
Dept. of Human Development
diegohenrique12@gmail.com

Tamara Mauder, Mag.med.vet.
Doctoral student
Institute of Anatomy
Histology and Embryology
Dept. for Pathobiology
University of Veterinary Medicine,
Vienna, Austria
+43 (1) 25077 – 2505
tamara.mauder@chello.at

Deanna McBroom, MM
Professor of Voice
Director of the Voice Program
Singing Voice Specialist
College of Charleston
Medical University of South Carolina
(843) 270-3505
mcbroomd@cofc.edu

Victoria S. McKenna, MS, SLP-CCC
Doctoral Candidate
Dept of Speech, Language, and
Hearing Sciences
Boston University
Boston, MA
(617) 358-1395
vmckenna@bu.edu

Brian McKinnon, MD, MBA, MPH
Physician
Drexel University College of Medicine
Dept. of Otorhinolaryngology
(215) 762-5530
bmckinnon@phillyent.com

Jocelyn Medina, MM, BM
Adjunct Lecturer of Voice
La Guardia Community College
Owner and Teacher
Running Tree Records
80 Winthrop Street
MM1, Brooklyn, NY 11225
(917) 710-3311
jocelyn@jocelynmolina.com

Kirstan Meenan, MD, BS
Resident Physician
University of Maryland
(814) 659-2067
kirsten.meenan@gmail.com

Iris Meerschman, MS, SLP
PhD Student
Dept. of Speech, Language
and Hearing Sciences
Ghent University
De Pintelaan 185, 2P1
9000 Gent, Belgium
+32 9 332 08 6394 73
Iris.Meerschman@Ugent.be

Daryush D. Mehta, PhD
Assistant Investigator
Dept. of Surgery
Center for Laryngeal Surgery and
Voice Rehabilitation
Mass General Hospital
Assistant Professor of Surgery
Dept. of Surgery
Massachusetts General Hospital
Harvard Medical School
Adjunct Assistant Professor
MGH Institute of Health Professions
Boston, MA, USA
(617) 726-1444
daryush.mehta@alum.mit.edu

FACULTY LIST 2018

Liza Meredith, PhD
Contract Assistant
Professor
Psychology
University of Minnesota
Minneapolis, MN
(612) 626-7762
mere0032@umn.edu

David Meyer, DM
Associate Professor of Voice
Shenandoah Conservatory
Director
Voice Pedagogy Research
Janette Ogg Voice Research
Center
1460 University Drive
Winchester, VA 22601
(540) 665-4544
dmeyer2@su.edu

Mark Meylan, BA, LTCL
Singing Teacher
London, United Kingdom
+44 7970694502
markmeylan@icloud.com

Deirdre D. Michael, PhD, CCC-SLP
Assistant Professor
Otolaryngology
University of Minnesota
Minneapolis, MN
(612) 676-5482
micha008@umn.edu

Donald Gray Miller, PhD, MM
Researcher
Groningen Voice Research,
Stavangerweg 21-2, 9723JC
Groningen, Netherlands
+ 31 50 501 2010
d.g.miller@vocevista.com

Gonzalo Miranda, MD
Assistant Professor
Dept. of Imaging and Radiology
University of Chile Hospital
Santiago, Chile
gomigo2000@gmail.com

Stephanie Misono, MD MPH
Assistant Professor,
University of Minnesota
Minneapolis, MN
(612) 625-3200
fax (612) 625-2101
smisono@umn.edu

Makoto Miyamoto, MD
Research Associate
Kyorin University
School of Medicine
6-20-2, Shinkawa
Mitakashi, 181-6811
Tokyo, Japan
miyamot@ks.kyorin-u.ac.jp

Filipe Modesto, BSc
MSc Student
University of Campinas
Institute of Language Studies
Dept. of Linguistics
+5519983480446
lipessmodesto@gmail.com

Mark Moliterno, MM, E-RYT500, C-IAYT, POLY
Founder, Yogavoice
yogavoice@gmail.com

Pâmela Aparecida Medeiros Moreira, SLP
Speech Language Pathologist
Speech-Language Pathology
and Audiology Department
Bauru School of Dentistry
Uni of São Paulo FOB/USP
Bauru (SP), Brazil,
+551432358332
pamelamoreira@usp.br

Luc Mongeau, PhD
Professor, McGill University
Dept. of Mechanical
Engineering
Montreal, QC, Canada
(514) 398-2777
luc.mongeau@mcgill.ca

Silvana Montenegro, PhD
Professor
Escuela de Medicina-Facultad
Ciencias Médicas
Universidad Nacional de
Rosario, Argentina
+54 341-155000158
montenegro_sm@hotmail.com

Sally Morgan, BA
CEO of Sally Morgan Voice
15 W 139 St #14M
New York, NY 10037
(914) 217-0902
Sally@SallyMorganVoice.com

Felipe Moreti, PhD
Speech-Language Pathologist
Voice Specialist
Universidade Federal
de São Paulo
São Paulo (SP), Brasil
Centro de Estudos da Voz
São Paulo (SP), Brasil.
+55 11 5575-1710
felipemoreti@uol.com.br

Richard Morris, PhD, MA, CCC-SLP Professor
College of Communication & Information
Florida State University
(850) 644-8459
rmorris@fsu.edu

Caitriona Munier, MSc, MBA, CCC-SLP
Speech Pathologist
Occupational Voice Specialist
Research fellow at Phoniatics
and Speech Pathology
Department
University of Helsinki
Helsinki, Finland
+353 86 2230083
caitriona.munier@outlook.com

Daniel Muñoz, MD, MSc
Dept. of Otolaryngology
University of Chile
Santiago, Chile
daniel.uchile@gmail.com

Karla Lizana Muñoz, MS
Speech-Language Pathologist
Research Assistant
Dept. of Communication
Sciences
University of Chile
Santiago, Chile
karla.lizana@gmail.com

Dirk Mürbe, MD
Professor of Phoniatics and
Paedaudiology
Division of Phoniatics and Audiology
Dept of Otorhinolaryngology
Technical University Dresden
Germany
+49 3514587045
dirk.muerbe@uniklinikum-dresden.de

FACULTY LIST 2018

Elizabeth Murray, PhD
Lecturer
Discipline of Speech Pathology
Faculty of Health Sciences,
University of Sydney
Australia
+61 2 93519870
elizabeth.murray@
sydney.edu.au

Thomas Murry, PhD, CCC-SLP
Professor
Loma Linda University Health
1895 Orange Tree Lane
Loma Linda, CA
(347) 419-5745
tmurry@llu.edu

Miki Nagase, MD, PhD
Professor
Kyorin University School of Medicine
Japan
mnagase@ks.kyorin-u.ac.jp

Maryam Naghibolhosseini, PhD
Research Associate
Dept. of Communicative
Sciences and Disorders
Michigan State University
(517) 884-8869
naghib@msu.edu

Angelika Nair, PhD
Vocologist (NCVS)
Pro Voce LLC
Voice Faculty
Drew University
36 Madison Ave.
Madison, NJ, 07940
(973)701-2329
angelika.nair@gmail.com

Marisa Lee Naismith, MM
Singing Teacher and Doctoral Candi-
date
Queensland Conservatorium
Griffith University
Level 3 Multi Media Building
Parklands Drive
Queensland 4218
Australia
+61 413455222
m.naismith@griffith.edu.au

Hideki Nakagawa, MD, PhD
Assistant Professor

Kyorin University
School of Medicine
Dept. of Otolaryngology –
Head and Neck Surgery
hnakagawa@seibokai.or.jp

Aishwarya Nallamuthu, MASLP
PhD Student & Senior Lecturer
Dept of Speech Language & Hearing
Sciences
Sri Ramachandra University
Chennai, India
aishwarya.nallamuthu@
sriramachandra.edu.in

Shermi Nanayakkara, BSc, SLP
Speech Language Pathology and
Audiology
India
+94770739055
shermi.nanayakkara@
gmail.com

Srihimaja Nandamudi, PhD, CF-SLP
Speech-Language Pathologist
Dept. of Rehabilitation
Ohio Living Dorothy Love
Sidney, OH
(937) 498-2391
nandas@bgsu.edu

**Chayadevie
Nanjundeswaran, PhD,
CCC-SLP**
East Tennessee State Univ.
Dept of Audiology & Speech-Language
Pathology
Lamb Hall Room 254
Johnson City, TN 37614
(423) 439-4036
nanjundeswar@etsu.edu

Shalini Narayana, PhD
Associate Professor
Dept of Anatomy and
Neurobiology
UTHSC
Memphis, TN, USA 38103
(901) 287-4616
snaraya2@uthsc.edu

Dilhani Nayakarathana, Bsc, SLP
Speech and Hearing Sciences
Dept. of Disability Studies
University of Kelaniya

Sri Lanka
+94763427306
dilhaninayakarathna@
gmail.com

Lavoisier L. Neto, MS
PhD Student
University of Campinas
Speech and Hearing Pathologist
School
Dept. of Human Development
Sao Paulo, Brazil
lavoisier83@gmail.com

Justice Sandra Schultz Newman
Gladwyne, PA 19035

Alissa A. Nolden, PhD
Postdoctoral Fellow
Monell Chemical Senses Center
Philadelphia, PA 19104
(267) 519-4878
anolden@monell.org

Carolyn K. Novaleski, PhD
Postdoctoral Fellow
Monell Chemical Senses Center
Philadelphia, PA 19104
(267) 519-4816
cnovaleski@monell.org

Jaqueline Mendes Mendez Novis
SLP student
Universidade Estadual
do Centro-Oeste
UNICENTRO
Irati, Paraná, Brazil
jaquelinenovis@gmail.com

Adam Novozámský, MEng
PhD student
Dept. of Image Processing
ÚTIA AV ČR
Prague, Czech Republic
+420 26605 2864
novozamsky@utia.cas.cz

Sun-Joo Oh, D.Mus.A.
Professor
Dept. of Music
East Tennessee State
University
(423) 439-6943
oh@etsu.edu

FACULTY LIST 2018

David Okerlund, MM, BM

Associate Professor
College of Music
Florida State University
(850) 645-6821
dokerlund@fsu.edu

Christian Olavarria, MD

Dept. of Otolaryngology
University of Chile Hospital
Santiago de Chile
christian.olavarria@gmail.com

Nicholas Ogrodnik, BEng

MEng Student
McGill University
Dept. of Biological and
Biomedical
Engineering
Montreal, QC, Canada
(613) 882-6994
nicholas.ogrodnik@
mail.mcgill.ca

Julina Ongkasuwan, MD, FAAP, FACS

Associate Professor
Otolaryngology - Head & Neck Surgery
Baylor College of Medicine
Houston, Texas
United States
Texas Children's Hospital
Pediatric Otolaryngology (Clinic)
6701 Fannin (CCC), 5th Floor
Houston, Texas 77030
United States
(832) 822-3250
julinao@bcm.edu

Robert F. Orlikoff, PhD

Dean, College of Allied Health
Sciences
East Carolina University
(252) 744-6010
orlikoffr16@ecu.edu

Stuart Orsher, MD

New York, NY 10021

Flávia de Lima Osório, PhD

Professor
Dept. of Neurosciences
and Behavioral Sciences
School of Medicine of Ribeirão Preto
University of São Paulo – Brazil
+55163602-2703
flaliosorio@ig.com.br

Andrew J. Ortiz, MS

Research Engineer
Dept. of Surgery
Center for Laryngeal Surgery and
Voice Rehabilitation
Massachusetts General
Hospital
AORTIZ15@mgh.harvard.edu

Fernanda Pacheco, BA

Research Assistant
Dept. of Communication Sciences and
Disorders
University of Chile
Santiago, Chile
fpacheco000@gmail.com

Haig Panossian, MD

Laryngology Fellow
Drexel University
College of Medicine
Dept. of
Otorhinolaryngology
(845) 492-1368
hpanossian@phillyent.com

Nico Paolo Paolillo, MD

Otolaryngologist
Adjunct Professor
Dipartimento di
Otorinolaringoiatria
Ospedale S. Leopoldo Mandic di
Merate (LC)
Facoltà di Medicina e Chirurgia
Università degli Studi di Milano
Milano, Italy
+39 333-996-8898
nicopaolillo@libero.it

Yeonggwang Park, BA

PhD Student
Doctoral Research Assistant
Dept. of Speech, Language, and
Hearing Sciences
Boston University
Boston, MA
(617) 455-2101
yppark@bu.edu

**Towino Paramby CScD,
CCC–SLP**

Assistant Professor
University of Central
Arkansas
(254) 214-7106
tparamby@uams.edu

Vanessa Pedrosa, MD, PhD

Speech Language Pathologist at
Record TV
Director of Fono-evidence
CEV - Voice Studies Center
Rua Machado Bittencourt
São Paulo, Brazil 04131080
+55 11 981351865
vanessa@fono-evidence.com.br

Nicola Pennill, MA

PhD Candidate
University of Sheffield
+44 0776 413 2151
npennill1@sheffield.ac.uk

Francisca Peralta, BA

Research Assistant
Dept. of Communication Sciences and
Disorders
University of Chile
Santiago, Chile
franpesj@gmail.com

**Pedro Melo Pestana, BSc – Speech
Pathology**

PhD student
Language Development and Disorders
Director
Speech-Language Pathologist
PMP terapia (Esposende, Portugal)
Universidade Fernando Pessoa
Health Sciences Faculty (Oporto,
Portugal)
+351 964 115 135
melopestana@gmail.com
ppestana@pmpterapia.pt

Kate Peters, MM

Executive Coach
Vocal Impact, Inc.
1230 Catalina Ave.
Seal Beach, CA 90740
(714) 390-3907
Kate.peters@vocalimpact.net

Ketaki Vasant Phadke, MSc

PhD student
Voice Research Lab
Dept. Biophysics
Faculty of Science
Palacký University Olomouc
Czech Republic
+420773092866
ketakislp@gmail.com

FACULTY LIST 2018

Andrea Pham, MA
Speech-Language Pathology Clinical Fellow
Montgomery County Public Schools
Rockville, MD
(508) 479-3415
andrea_pham82@yahoo.com

Janaina Pimenta, MSc
CEO
Espaço da Voz
Belo Horizonte, M.G., Brazil

Louise Pinkerton, MS, MM, CCC-SLP
Speech-Language Pathologist
Altru Health System
(701) 213-7999
louisepinkerton@alumni.iu.edu

Laura W. Plexico, PhD
Professor
Auburn University
Dept. of Communication Disorders
1199 Haley Center
Auburn, AL 36849
(334) 844-9620
lwp0002@auburn.edu

Nuria Polo, PhD
Assistant Professor
Faculty of Philology
Universidad Nacional de Educación a Distancia
Senda del Rey, 7
28040 Madrid, Spain
nuriapolo@flog.uned.es
+34 913986854

Alvaro Reyes Ponce, PhD, MS
Physical Therapist
Assistant Professor
Faculty of Rehabilitation Sciences
Universidad Nacional Andrés Bello- Chile
alvaro.reyes@unab.cl

Peter S. Popolo, PhD
Assistant Professor
Dept. of Communication Sciences and Disorders
Montclair State University
Bloomfield, NJ
(201) 419-8582
popolop@mail.montclair.edu

Joel Portnoy, MD
Laryngologist
ENT and Allergy Assoc. ,LLP
Lake Success, New York
(516) 775-2800
Assistant Professor
Department of Otolaryngology - Head and Neck Surgery
Zucker School of Medicine at Hofstra
Hempstead, New York
joelportnoymd@gmail.com

Silke Potthast, MD
Assistant Professor
Head of Dept. Radiology,
Hospital Limmattal
Urdorferstrasse 100
8952 Urdorf, Switzerland
+41-44-7368170
silke.potthast@spital-limmattal.ch

Jonathan Price, MM, BM
Priority Adjunct Professor
Musical Theater Voice
Adjunct Musical Theater Voice
Rider University
Marymount Manhattan College
Rowan University
(816) 853-4772
jprice@rider.edu

Kathy Kessler Price, PhD, MM
Associate Professor of Voice
Director, Presser
Voice Laboratory
Westminster Choir College
101 Walnut Lane
Princeton, NJ 08540
(816) 853-4882
price.kk@gmail.com
kprice@rider.edu

Jaqueline Priston, SLP
Speech-Language Pathologist
Private Practice
Rua Garcia D'Avila 64. Ipanema
Rio de Janeiro/RJ. 22421-010
+55 21 981818383
jaq@jaquelinepriston.com.br

Alison Purcell, PhD
Senior Lecturer
Discipline of Speech Pathology
Faculty of Health Sciences

University of Sydney
Australia
+61 2 9351 9335
alison.purcell@sydney.edu.au

Camilo Quezada, PhD
Assistant Professor
Dept. of Communication Sciences and Disorders
University of Chile
Santiago, Chile
cequezad@uc.cl

Nandhu Radhakrishnan, PhD, CCC-SLP
Associate Professor
Dept. of Speech and Hearing Science
Lamar University
Beaumont, Texas 77710
(409) 880-8338
nandhu@lamar.edu

R. Rajasudhakar, PhD, SLP
Lectures in Speech Sciences
Dept. of Speech-Language Sciences
AIIISH
Mysore- 570 006
Karnataka, India

Almoaid Rammal, MD
Otolaryngology Resident
McGill University
almoayadra@gmail.com

Rohit Ravi, PhD, SLP
Dept. of Speech and Hearing
School of Allied Health Sciences
Manipal University
Manipal, Karnataka, India
+9743490240
rohitravi94@gmail.com

K. Ravindran
ASNT IR Level III
Southern Inspection Services,
No.2, 2nd floor
Govindaraji Naickar Complex
Janaki Nagar, Arcot Road
Valasaravakkam
Chennai – 600087
Tamilnadu, India

FACULTY LIST 2018

Lilian Aguiar Ricz, PhD, SLP
 Professor
 Dept. of Ophthalmology
 Otorhinolaryngology
 Head, and Neck Surgery
 School of Medicine
 of Ribeirão Preto
 University of São Paulo- Brazil
 +55163602-2862
 liricz@fmrp.usp.br

Sheryl L. Rifas-Shiman, MPH
 Harvard Medical School
 HPHCI
 (305) 243-4315
 sheryl_rifas@harvardpilgrim.org

Gleidy Vannesa Espitia Rojas, SLP MSc
 PhD Candidate
 Dept. of Ophthalmology
 Otorhinolaryngology
 Head, and Neck Surgery
 School of Medicine
 of Ribeirão Preto
 University of São Paulo- Brazil
 +55163602-2862
 vannaesepitia08@hotmail.com

Amelia Rollings, PhD, MM
 Assistant Professor of Musical Theatre
 Voice
 Western Kentucky University
 1906 College Heights Blvd. #71086
 Bowling Green, KY 42101
 (803) 348-8119
 amelia.rollings@wku.edu

Andrea Karina Romano, SLP
 Professor
 Escuela de Fonoaudiología-Facultad
 Ciencias Médicas
 Universidad Nacional de
 Rosario, Argentina
 +54 341-155104406
 romanoak@hotmail.com

Constanza Romero, BA
 Research Assistant
 Dept. of Communication Sciences and
 Disorders
 University of Chile
 Santiago, Chile
 constanzaromero@ug.uchile.cl

Luis Romero, SLP
 Professor
 Dept of Communication Sciences and
 Disorders
 University of Chile
 Santiago, Chile
 7romero@gmail.com

Kevin D. Roon, PhD
 Post-Doctoral Researcher
 The Graduate Center at The City
 University of New York
 (212) 817.8825
 kroon@gc.cuny.edu

Elisabetta Rosa, SLP
 Speech-Language Pathologist
 Voice teacher, Freelancer
 via A. De Gasperi, 12 – 20063
 Cernusco Sul Naviglio
 Milan, Italy

Bridget Rose, MM, MS, CCC-SLP
 Philadelphia ENT Associates
 Drexel University College of Medicine
 (215) 762-5530
 brose@phillyent.com

Douglas F. Roth, MM, MA, CCC-SLP
 Associate Director
 Voice and Swallowing Center
 Assistant Professor
 Tufts University
 School of Medicine
 Speech Language Pathology and
 Audiology
 800 Washington St #823
 Boston, MA 02111
 Droth@tuftsmedicalcenter.org

David E. Rosow, MD
 Assistant Professor of
 Otolaryngology
 University of Miami Miller School of
 Medicine
 Assistant Professor
 Clinical Vocal Performance
 University of Miami Frost
 School of Music
 1120 NW 14th Street
 5th Floor
 Miami, FL 33136
 (305) 243-2587
 drosow@med.miami.edu

Adam D. Rubin, MD
 Adjunct Assistant Professor
 Michigan State Univ.
 School of Medicine
 Dept. of Otolaryngology-
 Head and Neck Surgery
 University of Michigan
 Medical Center
 Director, Lakeshore
 Professional Voice Center
 Lakeshore Ear, Nose & Throat Center
 21000 Twelve Mile Road
 Suite 111
 St. Clair Shores, MI 48081
 (586) 779-7610
 rubinad1968@gmail.com

Robert K. Ruggles, BS
 Masters Student
 MGH Institute of
 Health Professions
 Research Assistant
 Center for Laryngeal Surgery and
 Voice Rehabilitation
 Massachusetts General
 Hospital
 AORTIZ15@mgh.harvard.edu

Francisco Contreras Ruston, SLP
 Dept. of Communication
 Sciences and Disorders
 University of Valparaíso
 Santo Tomás University
 Chile
 fco.contreras.ruston@gmail.com

Babak Sadoughi, MD, FACS
 Assistant Professor of
 Otolaryngology
 Sean Parker Institute
 for the Voice
 Weill Cornell Medical College
 240 E 59th Street
 New York, NY 10022
 bas9049@med.cornell.edu

Mustafa Sahin, MD
 Aydın University
 Dept. of Otorhinolaryngology – HNS
 Aydın, Turkey
 +905336545502
 mustafa.kbb@yahoo.com

Koichiro Saito, MD, PhD
 Professor and Chairman
 Kyorin University
 School of Medicine

FACULTY LIST 2018

Dept. of Otolaryngology
Head and Neck Surgery
k-saitoh@ks.kyorin-u.ac.jp

Ken-Ichi Sakakibara, MSc, BSc

Associate Professor
Dept. of Communication
Disorders
Health Sciences University
of Hokkaido
kis@hoku-iryo-u.ac.jp

Marcelo Saldías, SLP

PhD student
University of Tampere
School of Education
Adjunct Instructor
Dept. of Communication
Sciences
University of Chile
Santiago, Chile
(56 9) 7800 3151
m.saldiaso@gmail.com

Abolfazl Salehi

PhD Student

Gláucia Laís Salomão, PhD

Dept. of Linguistics
Stockholm University
Stockholm, Sweden
+46 08-790 7561
gsalomao@kth.se

**Mary Sandage, PhD,
CCC-SLP**

Assistant Professor
Dept. of Communication
Disorders
1199 Haley Center
Auburn University
Auburn, AL 36849
(334) 844-9646
sandamj@auburn.edu

Gabriela Sandoval, SLP

School of Speech and Language Pa-
thology
SEK University
Santiago, Chile

María Alejandra Santi, SLP

PhD Candidate
Professor
Escuela de Fonoaudiología
Facultad de Ciencias Médicas

Universidad Nacional de
Rosario, Argentina
+54 341-156612844
malejandrasanti@gmail.com

Izadora Santos

Undergraduate
University of São Paulo
Bauru School of Dentistry
Speech-Language Pathology and
Audiology Department
Bauru/São Paulo/Brazil
+55(14)32358232
izadorah_santos@hotmail.com

Jair Lício dos Santos, PhD

Professor
Dept. of Social Medicine
School of Medicine
of Ribeirão Preto
University of São Paulo
Brazil
+55163602-2703
jairlfs@fmrp.usp.br

**Robert Thayer Sataloff, MD, DMA,
FACS**

Professor and Chairman
Dept. of Otolaryngology-HNS
Senior Associate Dean
Clinical Academic Specialties
Drexel University
College of Medicine
Dept. of Otolaryngology
Head and Neck Surgery
Faculty-
The Academy of Vocal Arts
Chairman, Board of Directors of the
Voice Foundation
Chairman, American Institute for
Voice and Ear Research
219 N. Broad St. 10th Floor
Philadelphia, PA 19107 USA
(215) 545-3322
rtsataloff@phillyent.com

Cara Sauder, MA, CCC-SLP

Doctoral Student
University of Washington
Speech and Hearing Sciences
1417 NE 42nd St.
Seattle, WA 98105
(801) 440-0375
carasauder@u.washington.edu

Matteo Scalabrin

SLP Student

Università degli Studi di Milano
+3489255371
matteo.scalabrin@outlook.it

Leda Searce, MM, MS, CCC-SLP

Clinical Associate Faculty
Duke University School of
Medicine
Director
Performing Voice Programs and
Development
Duke Voice Care Center
(919) 862-5739
leda.searce@duke.edu

K R Scherer

Dept. of Psychology
University of Geneva, Switzerland
and Dept. of Psychology
University of Munich
Germany
Klaus.scherer@unige.ch

Ronald C. Scherer, PhD

Distinguished Research
Professor
Dept. of Comm. Sci. &
Disorders
Bowling Green State
University
200 Health and Human
Services Building
Bowling Green, OH 43403
(419) 372-7189
ronalds@bgsu.edu

Katherine Schiller, BS

Research Specialist I
Dept. of Pediatrics
University of TN Health
Science Center
Memphis, TN, USA
(901) 287-7716
kschille@uthsc.edu

Kate Schirmer, BMus, MMusSt

Singing Teacher
(Performing Arts)
Queensland Conservatorium Griffith
University
8 Burke Street
Woolloongabba, Queensland
Australia 4102
+61407659379
kateschirmer@hotmail.com

FACULTY LIST 2018

Josef Schlömmicher-Thier, MD
 ENT and Occupational Medicine
 Austrian Voice Institute
 Salzburgerstrasse 7
 A-5202 Neumarkt, Austria
 +4362164030
 Fax: +436216403020
 austrianvoice@sbg.at
 hno-schloemicher@sbg.at

Matthew Schloneger, PhD, MM
 Assistant Professor of Voice
 Friends University
 (316) 772-0726
 matthew_schloneger@
 friends.edu

Susan G. Schwabacher, MA, CCC-SLP
 Speech-Language Pathologist
 Walter Reed National Military Medical
 Center
 (301) 319-7037
 susan.g.schwabacher.civ@mail.mil

Jean Schoentgen, PhD
 Research scientist
 L.I.S.A. Faculty of Applied Sciences
 Université Libre de Bruxelles
 Belgium
 jschoent@ulb.ac.be

Anne Schützenberger, MD
 University Hospital Erlangen
 Medical School,
 Dept. of Otorhinolaryngology
 Head & Neck Surgery
 Division of Phoniatrics and Pediatric
 Audiology
 Waldstr.1, 91054 Erlangen
 +4991318532616
 anne.schuetzenberger@
 uk-erlangen.de

Renata Scotto
 Armonk, NY

Marion Semmler, MSc
 PhD student
 University Hospital Erlangen
 Medical School
 Dept. of Otorhinolaryngology
 Head & Neck Surgery
 Division of Phoniatrics and Pediatric
 Audiology
 Waldstr. 1, 91054 Erlangen
 +4991318532607
 marion.semmler@uk-erlangen.de

Dr. Susan Shaiman, PhD
CCC-SLP
 University of Pittsburgh
 3500 Forbes Avenue
 Pittsburgh PA 15206
 (412) 383-6545
 shaiman@pitt.edu

Christine H. Shadle, PhD
 Senior Scientist
 Haskins Laboratories
 (203) 772-1156 ext. 228
 shadle@haskins.yale.edu

Lester Thomas Shane
 Lecturer, Pace University
 Adjunct Faculty
 Empire State College
 Carnegie-Mellon University
 Adjunct Faculty
 American Academy of
 Dramatic Arts
 New York Film Academy
 428 East 77th #3D
 New York, NY 10075
 (212) 249-7076 (h)
 (917) 447-4802 (c)
 LesterTShane@aol.com
 Skype:LesterTShane

Vasudha Sharma, MA, SLP
 Manipal University
 Manipal, Karnataka, India

Michael Sheehan
 SHEEHAN Associates, Inc.
 1150 17th Street, NW
 Ste. 604
 Washington, DC 20036
 (202) 775-8787
 deb.mcgraw@
 sheehanassociates.com

Adrianna Shembel, PhD, CCC-SLP
 Postdoctoral Fellow
 NYU Langone Medical Center, Voice
 Center
 Department of Otolaryngology
 345 E 37th St, Suite 306
 New York, NY 10016
 (646) 754-8642
 Adrianna.Shembel@nyumc.org

George Shirley
 Professor of Voice
 University of Michigan

2324 Earl V. Moore Building
 Ann Arbor, MI 48109
 gis@umich.edu

Milen Shishkov, PhD
 Research Associate
 Wellman Center for
 Photomedicine
 Massachusetts General
 Hospital
 Harvard Medical School
 shishkov@helix.mgh.harvard.edu

Rahul Shrivastav, PhD,
CCC-SLP
 Professor
 Vice President for Instruction
 University of Georgia
 Athens, GA
 (706) 583-0690
 rahuls@uga.edu

Gabriela Fernandes Vieira Silva, SLP
 Speech Pathologist
 FMRP - USP
 +55 16 991383902
 gabifernandes2@hotmail.com

Kelly Cristina Alves
Silverio, PhD
 Dental Oral Biology
 Professor
 Speech-Language Pathology and
 Audiology Dept.
 Bauru School of Dentistry
 University of São Paulo
 FOB/USP
 Bauru, São Paulo, Brazil.
 Speech-language Pathology Dept.
 Dentrist of Bauru Faculty
 University of São Paulo
 Bauru – FOB/USP
 +55 14 32358332
 kellysilverio@usp.br

Santhosh Simon MSc,
CCC-SLP
 PhD Student
 University of Sheffield
 UK
 +1 408-888-6771
 santhoshsimon01@gmail.com

Loraine Sims, DMA
 Associate Professor
 Edith Killgore Kirkpatrick Professor of
 Voice

FACULTY LIST 2018

Voice Studies Division Chair
Vocal Area Coordinator
Louisiana State University
with NATS
(225) 335-4803
lsims@lsu.edu

Preeti M. Sivasankar, PhD, CCC-SLP
Professor/Associate Head
Speech, Language, and
Hearing Sciences
Purdue University
715 Clinic Drive
Lyles Porter Hal
West Lafayette IN, 47906
(765) 496-6628
preeti@purdue.edu

Brenda Smith, DMA
Associate Professor of Music
University of Florida
Gainesville, FL
Co-Founder, "Sing for Life"
(352) 374-4855
bsmith@arts.ufl.edu

Heather Smith, BA in Theatre
M.S. Student
Dept. of Audiology and
Speech-Language Pathology
East Tennessee State
University
(215) 514-9622
smithhr2@etsu.edu

Donna Snow, MFA, BA
Associate Professor
Voice & Acting
Dept. of Theater Temple Univ
Tomlinson Theater
1301 W. Norris St.
Philadelphia, PA 19122
(856) 745-3036
dsnow@temple.edu

Nancy Pearl Solomon, PhD, CCC-SLP
Research Speech Pathologist
Audiology & Speech Center
Walter Reed National Army
Military Medical Center
8900 Wisconsin Ave
Bethesda, MD 20889
(301) 319-7042
Nancy.P.Solomon.civ@mail.mil

Danilo Hernane Spatti, PhD
Professor at Maths Science Institute
and Computing
University of São Paulo
danilospatti@gmail.com

Evelyn Alves Spazzapan, SLP
Graduate Student
Faculdade de Filosofia e Ciências
University Estadual Paulista
Campus Marília
Marília (SP), Brazil,
+5518997492952
evelyn_spazzapan@
yahoo.com

Stephen Raad Stephan, MD, BS
Resident Physician
Cesars-Sinai Medical Center
(619) 729-4622
Stephanrstephen@gmail.com

Cara E. Stepp, PhD
Assistant Professor
Dept. of Speech, Language, and
Hearing Sciences
Dept. of Biomedical
Engineering
Dept. of Otolaryngology – HNS
Boston University
School of Medicine
Boston, MA
cstepp@bu.edu

Ali Stockness, MPH
Research Manager, Otolaryngology
University of Minnesota, Minneapolis,
MN
(612) 626-3018
fax (612) 625-2101
nich0656@umn.edu

Claudio Storck, MD
Assistant Professor
Head of Laryngology and Phoniatics
University Hospital Basel
ENT - Dept.
Petersgraben 4
4031 Basel, Switzerland
+41-61-265-41-31
claudio.storck@usb.ch

Pravin Kumar Subbaraj, PhD, MTech
Research Scientist
Voice Research Lab
Dept. Biophysics
Faculty of Science
Palacký University
Olomouc, Czech Republic
+420 58 563 4173
pravin.subbaraj@upol.cz

Winston Sullivan, PhD, MM, BM
Graduate Assistant
University of Kansas
Vocal/Choral Pedagogy Research
Group
(865) 455-7284
winston.sullivan@ku.edu

Johan Sundberg, PhD
Professor in Musical Acoustics
KTH, Royal Institute of
Technology
Dept. of Speech, Music and Hearing
Lindstedtsv. 24, SE-10044
Stockholm, Sweden
+4687907873
jsu@csc.kth.se

Jan G. Švec, PhD et PhD
Research Scientist
Palacky University Olomouc
Faculty of Science
Dept. of Biophysics
tr. 17. listopadu 12
771 46 Olomouc
Czech Republic and
Voice Centre Prague
Medical Healthcom, Ltd.
Prague, Czech Republic
+420585634171
jan.svec@upol.cz

Kin Heng Tam, BAppSc, SLP
Discipline of Speech Pathology
Faculty of Health Sciences
University of Sydney
Australia
+61 432 925 727
isaactam5@gmail.com

Hiroko Terasawa, PhD, MA
Assistant professor
Faculty of Library
Information and Media Science
University of Tsukuba
terasawa@slis.tsukuba.ac.jp

FACULTY LIST 2018

Sten Ternström, PhD
 Professor of Music Acoustics
 KTH Royal Institute of
 Technology
 School of Computer Science and
 Communication
 Dept of Speech, Music and Hearing
 Lindstedtsvägen 24 SE-100 44
 Stockholm, Sweden
 +4687907855
 stern@kth.se

Lauren Timmons, BM
 Graduate Clinician
 Communication Disorders and
 Sciences
 California State University, Northridge
 (847) 347-8034
 lktimmons@gmail.com

Ingo R. Titze, PhD
 Executive Director
 National Center for Voice
 and Speech
 The University of Utah
 Salt Lake City, UT 84101
 Distinguished Professor
 The University of Iowa
 Dept of Communication
 Sciences and Disorders
 Iowa City, IA 52242
 (801) 596-2012
 ingo.titze@ncvs2.org

Marco Tizzano, PhD
 Assistant Member
 Monell Chemical Senses Center
 Philadelphia, PA 19104, USA
 (267) 519-4845
 mtizzano@monell.org

Laura E. Toles, MS, CCC-SLP
 Clinical Research Coordinator
 Dept. of Surgery
 Center for Laryngeal Surgery and
 Voice Rehabilitation
 Mass General Hospital
 PhD Student
 MGH Institute of Health
 Professions
 Boston, MA, USA
 LTOLES@MGHIHP.EDU

**Kenneth Tom, PhD, CCC-SLP, RYT,
 C-IAYT**
 Associate Professor Emeritus
 California State University Fullerton
 Dept. of Human
 Communication Studies
 (949) 922-0115
 ktom@fullerton.edu

Valerie L Trollinger, MM, DME
 Associate Professor of Music
 Kutztown University of PA
 Associate Professor (Adjunct)
 Drexel University College of Medicine
 (610) 683-1588
 vtrollin@earthlink.net

**Jared Trudeau, MFA Voice Pedagogy -
 Musical Theatre**
 Associate Professor
 The Boston Conservatory
 (860) 428-3616
 jtrudeau@bostonconservatory.edu

Fabian Unteregger, MD
 Graduate, Comedian Artist
 University Hospital Basel
 ENT - Dept.
 Petersgraben 4
 4031 Basel, Switzerland
 +41-61-265-25-25
 Fabian@unteregger.net

Melek Nur Uygun, MSc
 Medical Park Health Center
 Dept. of Otorhinolaryngology – HNS
 Unit of Clinical Vocology
 Izmir, Turkey
 +905547556070
 uygun.meleknur@yahoo.com

Thays Vaiano, SLP
 PhD Candidate
 Voice Specialist
 CEV, UNIFESP
 Brazil
 +55 11 5575-1710
 tvaiano@uol.com.br

Robert M. Velardi
 BA Student in Speech-Language
 Pathology
 St. John's University
 Queens, NY
 (718) 990-5586
 robert.velardi15@my.stjohns.edu

**Maxine Van Doren, MS,
 CCC-SLP**
 Speech and Language Pathologist
 Brigham and Women's
 Hospital
 45 Francis Street,
 Boston, MA 02115
 (617) 525-3000
 mvandoren1@partners.org

Eva van Leer, PhD, MFA
 Assistant Professor
 Georgia State University
 College of Education and
 Human Development
 30 Pryor St. SW,
 Atlanta, GA, 30303
 (404) 413-8047
 eva.van.leer@gmail.com

Kristiane Van Lierde, PhD
 Professor
 University Ghent
 Dept of speech language and hearing
 sciences
 Universitair Ziekenhuis
 2P1 De pintelaan 185
 9000 Gent, Belgium
 +003293322391
 kristiane.vanlierde@ugent.be

**Jarrad H. Van Stan, PhD,
 CCC-SLP**
 Speech Language Pathologist
 Mass General Hospital Center
 for Laryngeal Surgery and Voice
 Rehabilitation
 Instructor in Surgery
 Dept. of Surgery
 Mass General Hospital
 Harvard Medical School
 Adjunct Assistant Professor
 MGH Institute of Health Professions
 Boston, MA, USA
 (617) 726-1444
 JVanStan@MGHIHP.EDU

FACULTY LIST 2018

Sara Valentine, MFA, BA
Assistant Professor of Theatre
University of Southern Maine
(302) 438-7504
sara.valentine@maine.edu

Susana Vaz-Freitas, PhD, MSc, SLP
Speech-Language Pathologist
ENT Department
Centro Hospitalar do Porto
Health Sciences Faculty
Universidade Fernando Pessoa
Oporto, Portugal
+351 915 307 851
svazfreitas@gmail.com

Geovana Ramazzini Vechi
Graduating Speech and
Hearing Pathologist
University of Campinas Speech and
Hearing Pathologist School
Dept. of Human Development
Sao Paulo, Brazil
geo015vechi@gmail.com

Lukas Salfate Velásquez, MS
Speech-Language Pathologist
Research Assistant
Dept. of Communication Sciences
University of Chile
Santiago, Chile
lukas.salfate@gmail.com

Lakshmi Venkatesh, PhD
Associate Professor
Dept. of Speech Language and
Hearing Sciences
Sri Ramachandra University
Chennai, India 600116
lakshmiv@sriramachandra.edu.in

Anumitha Venkatraman, MS
Student
Purdue University
715 Clinic Drive
Lyles Porter Hall
West Lafayette IN, 47906
(949) 353-4980
avenkatr@purdue.edu

Madhumitha Venkataraman
MASLP student
Dept. of Speech Language & Hearing
Sciences
Sri Ramachandra University
Chennai, India
+919789988660
madhuvenkataslp@gmail.com

Ingrid Verduyck, PhD, SLP
Assistant Professor
Université de Montréal
(514) 343-6111
ingrid.verduyck@gmail.com

Carla Vergara, SLP
School of Speech and
Language Pathology
SEK University
Santiago, Chile

Cecilia Vergara, BA
Research Assistant
Dept. of Communication Sciences and
Disorders
University of Chile
Santiago, Chile
vergara.cecilia.a@gmail.com

Fanny Verstappen
Master's Student

Millena Maria Ramalho Matta Vieira, SLP
Speech-Language Pathology and
Audiology Department
Bauru School of Dentistry
Univ of São Paulo - FOB/USP
Bauru (SP), Brazil
+551432358332
lenafono@gmail.com

Vinicius Jefferson Dias Vieira, MS
Technologist in
Telecommunications
UFCG – Federal University of Campina
Grande
+55 83 2101-1000
viniviusjdv@gmail.com

Martín Vivero, SLP
Hospital del Salvador
Unidad de Otorrinolaringología
Chile
martinviverod@gmail.com

Alexandra Vorik, MD
Graduate
University Hospital Basel
ENT - Dept.
Petersgraben 4
4031 Basel, Switzerland
+41-61-265-25-25
alexandravorik@aol.com

Jafar Vossoughi, PhD
President
Engineering & Scientific
Research Associates
Olney, MD
(301) 570-9771
vossoughi@verizon.net

Jitka Vydrová, MD
Director
Head Laryngologist
Voice Center Prague
Španělská 4
Prague, Czech Republic
+420 733 329 365
vydrova@medico.cz

Priska Wagner
Graduate
University Hospital Basel
ENT - Dept.
Petersgraben 4
4031 Basel, Switzerland
+41-61-265-25-25
priska.wagner@stud.unibas.ch

Kenta Wakasa, BS
Student
University of Tsukuba
1-2 Kasuga, Tsukuba
Ibaraki, 305-8550, Japan
+90826-7352
wakasa.kenta.su@

FACULTY LIST 2018

alumni.tsukuba.ac.jp

Patrick R. Walden, PhD, CCC-SLP
Associate Professor
St. John's University
Queens, NY
(718) 990-5586
waldenp@stjohns.edu

Huijie Wang, PhD
Université de Montréal
Dept. of Pharmacology
huijie.wang@mcgill.ca

Xiaoyi Wang, MD
Director doctor
Dept. of Otolaryngology
Head and Neck Surgery
Beijing Tongren Hospital
Capital Medical University
+8601013611238074
iyouheshe@sina.com

Tamiko Washington, MFA
Associate Professor of Theatre
Chapman University
One University Drive
Orange, California 92866
washingt@chapman.edu

Itaru Watanabe, MD
Research Associate
Kyorin University
School of Medicine
Dept. of Otolaryngology-
Head and Neck Surgery
itanabe413@yahoo.co.jp

Allison Waters, BS
MS Student
East Tennessee State
University
Dept. of Audiology and
Speech-Language Pathology
(919) 819-2925
watersaw@etsu.edu

Christopher Watts, PhD
Assistant Dean for Strategic Initiatives
Harris College of Nursing and
Health Sciences
Director
Davies School of Communication
Sciences and Disorders
Texas Christian University
Fort Worth, TX
(817) 257-7621

c.watts@tcu.edu

Edrie Means Weekly, MM, BME
Associate Professor of Voice
Contemporary Commercial Music
Musical Theater Styles Specialist
CCM Vocal Pedagogy Institute
Co-Founder
Shenandoah University
and Conservatory of Music
1460 University Ave.
Winchester, VA 22601
(703) 470-9443
edriew@aol.com

Matthias Weikert, MD
ENT and Phoniatician
Austrian Voice Institute
Germany
Heitzerstraße 19
D-93049 Regensburg
Austrian Voice Institute
Salzburgerstrasse 7
A-5202 Neumarkt
+ 00499412802511
fax: +004994123696
mweikert@bonvox.de

Barbara Weinrich, PhD, CCC-SLP
Research Associate
Professor Emerita
Cincinnati Children's Hospital Medical
Center
Miami University
3333 Burnet Ave.
Cincinnati, OH 45229
(513) 424-2839
weinribd@miamioh.edu

Gerald Weissengruber, Dr.med.vet.
Associate Professor
Institute of Anatomy, Histology and
Embryology
Dept. for Pathobiology
Univ of Veterinary Medicine
Vienna, Austria
+43 (1) 25077 - 2505
Gerald.Weissengruber@
vetmeduni.ac.at

Graham F. Welch
University College
London Institute of Education UK
graham.welch@ucl.ac.uk

Jennifer Winston, MS, CCC-SLP

Speech and Language Pathologist

Brigham and Women's Hospital
(617) 525-3000
jwinston@mghihp.edu

Paul M. Wise, PhD
Associate Member
Monell Chemical Senses Center
Philadelphia, PA 19104
(267) 519-4799
pwise@monell.org

Peak Woo, MD, FACS
Clinical Professor of
Otolaryngology
Ichan School of Medicine at Mount
Sinai
300 Central Park West Unit 1H
New York, NY 10024
(201) 937-0712
peakwoo@peakwoo.com

Rebecca Worthington, GD, MM
rebecca.worthington@
necmusic.edu

Wen Xu, MD
Director of Laryngology
Dept. of Otolaryngology
Beijing Tongren Hospital
Capital Medical University
+8601013501387856
xuwendoc@126.com

Xinlin Xu, MD
Otolaryngologist
Xiamen University
Zhongshan Hospital
No. 201-209
Xiamen HuBing South Road
Fujian, P.R. China
+8618250867320
xinlin66544566@163.com

FACULTY LIST 2018

Rosiane Yamasaki, PhD
Speech Pathologist, CEV
USP – University of São Paulo
+55115575-1710
r.yamasaki@uol.com.br

Qingwen Yang, MM
Director doctor
Dept. of Otolaryngology
Head and Neck Surgery
Beijing Tongren Hospital
Capital Medical University
+8601013701367356
yangqingwen@sohu.com

Edwin Yiu, PhD
Professor
Voice Research Laboratory
Division of Speech & Hearing Sci-
ences
The University of Hong Kong
5/F, Prince Philip Dental Hosp
34 Hospital Road,
Sai Ying Pun, Hong Kong
+852-91938866
eyiu@hku.hk

Emily Wing-Tung Yun
Bachelor of Health Sciences
(Speech Pathology)
Honours Student
The University of Sydney
eyun4689@uni.sydney.edu.au

Stephanie RC Zacharias, PhD,
CCC-SLP
Speech-Language Pathologist II
Cincinnati Children's Hospital
Medical Center
(513) 803-2801
Zacharias.Stephanie@mayo.edu

Matias Zanartu, PhD
Assistant Professor
Dept. of Electronic Engineering
Universidad Técnica Federico Santa
María
matias.zanartu@usm.cl

Qingkai Zeng, MD
Dept. of ENT
Xiamen University
Zhongshan Hospital
Xiamen, Fujian, China
+86 18871535206
lamazqk@qq.com

Peiyun Zhuang, MD, MS
Professor
Dept. of Otolaryngology
Xiamen University
Zhongshan Hospital
Fujian, P.R. China
+8613003989899

peiyun_zhuang@yahoo.com

Maik Zimmermann,
Dipl-Ing
Bayerisches Laserzentrum GmbH
Konrad-Zuse-Str. 2-6
91052 Erlangen, Germany
Erlangen Graduate School
Advanced Optical
Technologies (SAOT)
Friedrich-Alexander-University
Erlangen-Nürnberg
Paul-Gordan-Str. 6
91052 Erlangen, Germany

Barbara Zitová, PhD
Dept. Head
Dept of Image Processing
ÚTIA AV ČR
Prague, Czech Republic
+420 26605 2390
zitova@utia.cas.cz

Ana Flavia Zuim, PhD
Director Vocal Performance
Steinhardt-NYU/Hamilton
Rehearsal Pianist
New York University
35 West 4th Office 977
New York, 10003

ELSEVIER

Thank you for sponsoring the
Sataloff Young Investigator's Award
at The Voice Foundation's 47TH Annual Symposium

ADVISORY
BOARD
2018
47TH
ANNUAL
SYMPOSIUM

ADVISORY BOARD 2018

Chairman, Michael M. Johns III, MD

Mona Abaza, MD	Charles R. Larson, PhD
Jean Abitbol, MD	Jeannette L. LoVetri
Ken Altman, MD	Christy L. Ludlow, PhD
Shaheen Awan, PhD	Nicolas E. Maragos, MD
R.J. Baken, PhD	Albert Merati, MD
Mara Behlau, PhD	David Meyer, DM
Diane M. Bless, PhD	Claudio F. Milstein, PhD
William S. Brown, PhD	Thomas Murry, PhD
Thomas Carroll, MD	Robert H. Ossoff, DMD, MD
Raymond H. Colton, PhD	Rita Patel, PhD
Kathleen T. Cox, PhD	Michael Pitman, MD
Dimitar Deliyski, PhD	Lisa S. Popeil, MFA
Jayme Dowdall, MD	Joel Portnoy, MD
Molly Erickson, MM, PhD	David Rosow, MD
Abdul-Latif Hamdan, MD, FACS	Adam Rubin, MD
Mary Hawkshaw, RN, BSN, CORLN	Lucille S. Rubin, PhD
Christian Herbst, PhD	John S. Rubin, MD, FACS, FRCS
Shigeru Hirano, MD, PhD	Amy Rutt, DO, FACS
Hajime Hirose, MD	Ronald C. Scherer, PhD
Norman D. Hogikyan, MD	Rahul Shrivastav, PhD
David Howard, PhD, BS	Donna Snow, MFA
Eric Hunter, PhD	Nancy Pearl Solomon, PhD
Jack J. Jiang, MD, PhD	Johan Sundberg, PhD
Joel Kahane, PhD	Jan G. Švec, PhD
Michael Kalisman, MD	Sten Ternström, PhD
Gwen S. Korovin, MD	Harvey M. Tucker, MD, FACS
Karen Kost, MD, FRCSC	Peak Woo, MD, FACS
Joan Lader, SLP	Gayle Woodson, MD
Denis C. Lafreniere, MD, FACS	Edwin M.L. Yiu, PhD, PhD
	Peiyun Zhuang, MD

The Annual Symposium is possible by the hard work of many people behind the scenes. Our Thanks to:

THE PENTA STAFF
The Board of Directors and Advisory Board Members
JOV Editorial Board
Awards and Development Committee Members
Volunteers, Donors, and Attendees

JOURNAL OF VOICE EDITORIAL BOARD

Mona Abaza, MD
 Katherine Verdolini Abbott, PhD
 Jean Abitbol, MD
 Kenneth Altman, MD, PhD, FACS
 Shaheen Awan, PhD, CCC-SLP
 R J Baken, PhD
 Catherine L Ballif, MA, CCC-SLP
 Julie Barkmaier-Kraemer, PhD, CCC-SLP
 Kathryn Barnes-Burroughs, DMA
 Margaret M. Baroody, MM
 Mara Behlau, PhD
 Michael Benninger, MD
 Gerald S Berke, MD
 Jonathan M. Bock, MD, FACS
 Heather Shaw Bonilha, PhD, CCC-SLP
 Joseph Bradley, MD
 Susan Baker Brehm, PhD, CCC-SLP
 Michael P. Cannito, PhD
 Linda Carroll, PhD, CCC-SLP
 Thomas L. Carroll, MD
 Swapna Chandran, MD
 Nicole Clements, PhD
 Thomas Cleveland, PhD
 John R. Cohn, MD
 Raymond H Colton, PhD
 Nadine Connor, PhD
 Kathleen Treole Cox, PhD, CCC-SLP
 Brianna Crawley, MD
 Seth Dailey, MD
 Edward J Damrose, MD, FACS
 Rima DeFatta, MD
 Vanessa DeGuzman, MS
 Philippe H Dejonckere, MD, PhD
 Dimitar Deliyiski, PhD
 Gregory Dion, MD
 Michael Döllinger, PhD
 Matthias Echernach, MD
 Claudia Eckley, MD
 Robert Eller, MD, USAF
 Kate A Emerich, MS, CCC-SLP
 Molly Erickson, PhD, CCC-SLP
 Deborah Feijó, MSc
 Charles N Ford, MD, FACS
 Stephanie Fort, MM, MS, CCC-SLP
 Adrian Fourcin, PhD
 David O Francis, MD
 C Gaelyn Garrett, MD
 Jacqueline Gartner-Schmidt, PhD
 Shirley Gherson, PhD, CCC-SLP
 Marco Guzman, PhD
 Lucinda Halstead, MD
 Abdul-latif Hamdan, MD, FACS
 Edie Hapner, PhD, CCC-SLP
 Christopher Hartnick, MD
 Mary Hawkshaw, RN, BSN, CORLN
 Yolanda Heman-Ackah, MD
 Christian T Herbst, PhD
 Stellan Hertegård, MD, PhD
 Markus Hess, MD
 Shigeru Hirano, MD, PhD
 Norman Hogikyan, MD
 Harry Hollien, PhD
 David Howard, PhD
 Amanda Hu, MD
 Krzysztof Izdebski, FK, MA, PhD, CCC-SLP, FASHA
 Marie Jette, PhD, CCC-SLP
 Jack J. Jiang, MD, PhD
 Michael Johns III, MD
 Aaron Johnson, PhD, MM, CCC-SLP
 Ashwini Joshi, PhD, CCC-SLP
 Joel C Kahane, PhD
 Philip Owen Katz, MD, FACP, FAGG
 Sid Khosla, MD
 Gwen S Korovin, MD
 Karen M Kost, MD, FRCSC
 Anne-Maria Laukkanen, PhD
 Wendy LeBorgne, PhD, CCC-SLP
 Christy Ludlow, PhD
 Donna S. Lundy, PhD
 Karen M. Lyons, MD
 Lyndsay Madden, DO
 Catherine Madill, PhD
 Steven Mandel, MD
 Nicolas E Maragos, MD
 Ted Mau, MD, PhD
 David Mayer, MD
 Albert L Merati, MD, FACS
 David Meyer, DM
 Luc Mongeau, PhD
 Jamie Eaglin Moore, MD
 Murray D Morrison, MD
 Thomas Murry, PhD
 Chayadevie Nanjundeswaran, PhD, CCC-SLP
 Diana Orbelo, PhD, CCC-SLP
 Robert Orlikoff, PhD
 Nico Paolillo, MD
 Rita Patel, PhD
 Michael Pitman, MD
 Joel Portnoy, MD
 Sharon Radionoff, PhD
 Lorraine Olson Ramig, PhD, CCC-SLP
 Marc Remacle, MD, PhD
 Rick Roark, PhD
 Bridget Rose, MM, MS, CCC-SLP
 Deborah Caputo Rosen, PhD
 Nelson Roy, PhD, CCC-SLP
 Adam Rubin, MD
 John S Rubin, MD
 Amy Rutt, DO
 Mary J Sandage, PhD, CCC-SLP
 Shimon Sapir, PhD, CCC-SLP
 Ronald C Scherer, PhD
 Matthew Schloneger, PhD
 Sarah Marx Schneider, MS, CCC-SLP
 Rahul Shrivastav, PhD, CCC-SLP
 Peta White Sjölander, PhD
 Brenda Smith, DMA
 Ahmed M.S. Soliman, MD
 Nancy Pearl Solomon, PhD
 Sheila Stager, PhD
 C Richard Stasney, MD, FACS
 Johan Sundberg, PhD
 Jan Švec, PhD, PhD
 Kristine Tanner, PhD, CCC-SLP
 Sten Ternström, PhD
 Susan L Thibeault, PhD, CCC-SLP
 Ingo Titze, MSEE, PhD
 Harvey M Tucker, MD
 Eva van Leer, PhD
 Kristiane van Lierde, PhD
 Miriam Ruth van Mersbergen, PhD, CCC-SLP
 Lisa Vinney, PhD, CCC-SLP
 Ben C Watson, PhD, CCC-SLP
 Gayle Woodson, MD
 Wen Xu, MD, PhD
 Edwin Yiu, PhD
 Karen Zur, MD

**JOURNAL
 OF
 VOICE
 EDITORIAL
 BOARD
 2018
 47TH
 ANNUAL
 SYMPOSIUM**

PRESENTATION
COACHING
2018
47TH
ANNUAL
SYMPOSIUM

Symposium Presentation Coaching (FREE)

Assistance with Your Paper or Poster Presentation.

ALL

Presenters Will Benefit

English is *not* your mother-tongue?
Doing a *Poster Presentation*?
Are YOU a *first-time* presenter?
New material for your presentation?

Once again we are offering the successful half-hour Presentation Coaching sessions to anyone presenting at the symposium.
Turn great data into a solid presentation.

Coaching will be available at the Philadelphia Westin Hotel Board Room at the following times **free of charge**.

(Times are subject to change.)

Poster Presentation Coaching, Accent Reduction Coaching, Oral Presentation, Alexander Technique

WEDNESDAY, MAY 30, 2018 3:00pm—6:00pm (Diane Gaary)

WEDNESDAY, MAY 30, 2018 6:00pm—7:00pm (Dr. Nancy Solomon)

All Poster Presentation Coaching, Oral Presentation, Accent Reduction Coaching, Alexander Technique

THURSDAY, MAY 31, 2018 8:00am—11:00am (Jeannie LoVetri)

THURSDAY, MAY 31, 2018 2:00pm—6:00pm (Dr. Lucille Rubin)

Oral Presentation, Accent Reduction Coaching, Alexander Technique

FRIDAY, JUNE 1, 2018 9:00am—11:00am (Donna Snow)

Oral Presentation, Accent Reduction Coaching, Alexander Technique

SATURDAY, JUNE 2, 2018 9:00am—11:00am (Donna Snow)

SATURDAY, JUNE 2, 2018 1:00pm—5:00pm (Janet Feindel)

**To schedule coaching, contact Maria Russo at
office@voicefoundation.org**

Symposium Presentation Coaches

Assistance from a coach to HELP you present your research

Janet Madelle Feindel, Full Professor at Carnegie Mellon University and author of *The Thought Propels the Sound* (Plural Publishing), is a certified Alexander Technique Teacher and Fitzmaurice Voice Associate & Designated Linklater Voice Teacher.

Diane Gaary, MFA, BA, is an Alexander Teacher, Voice and Speech Trainer, and Feldenkrais Practitioner™. She teaches at Temple University, Arcadia University, and Westminster Choir College, and maintains private studios in Philadelphia and New York City.

Jeannette LoVetri originated the first program on Contemporary Commercial Music (CCM) at Shenandoah Conservatory in Virginia in 2002. Singing Voice Specialist, The Voice Workshop, New York City. She is one of the world's top specialists in training singers for contemporary commercial music, and the developer of Somatic Voicework

Lucille S. Rubin, PhD, of Professionally Speaking And Circle in the Square Theatre School NYC. initiated this successful program. As a former university professor she has extended her coaching skills to corporate clients, Broadway performers, media personalities and presentation speakers.

Donna Snow, MFA, Associate Professor and Head of the Undergraduate Acting Program at Temple University Theater Department, is a Master Teacher in Fitzmaurice Voice Technique.

Nancy Pearl Solomon, PhD, CCC-SLP, is a research speech-language pathologist at Walter Reed National Military Medical Center and adjunct professor at the University of Maryland with three decades' experience presenting research papers and posters.

Thank you, Coaches for championing this effort for its **twelfth** successful year!

PRESENTATION
COACHES
2018
47TH
ANNUAL
SYMPOSIUM

WILBUR JAMES GOULD AWARD

Anna Moffo Sarnoff 1996 Robert T. Sataloff 2007 Stuart Orsher 2018
Sadanand Singh, PhD 2001

TONY RANDALL AWARD

Eli Wallach 2008

RAYMOND AND BEVERLY SACKLER AWARD RECIPIENTS

Helen Hayes 1988	Anna Moffo Sarnoff 2001	Dr. John 2013
Walter Cronkite 1989	Terry Gross 2002	Bootsy Collins 2014
James Earl Jones 1990	Tony Randall 2003	Joel Grey 2015
Jessica Tandy 1991	Justice	Stacy Keach 2015
C. Everett Koop 1992	Sandra Schultz Newman 2007	Paulo Szot 2016
Jack Klugman 1995	Bobby Rydell 2011	Chita Rivera 2016
Patti LuPone 1998	Danny Aiello 2012	Tommy Tune 2017
Nancy Snyderman, MD 1999	Michael Sheehan 2012	Cicely Tyson 2018
Celeste Holm 2000	Anthony Lacuria 2013	

VOICE EDUCATION RESEARCH AWARENESS AWARD

Geraldine Dietz Fox 1990	Jack Klugman 2001	Paul Plishka 2010
Enrico Manca 1991	Dame Julie Andrews 2002	Richard Raub 2010
Anthony Quinn 1993	Samuel Katz 2002	Barry Bittman 2011
Dan Rather 1993	Renata Scotto 2003	Diane Rehm 2011
Anna Moffo Sarnoff 1993	Constantine Papadakis 2003	Diana Soviero 2011
Adele Warden Paxson 1993	Robert Driver 2004	Terry Stewart 2011
Dan Rather 1993	Aprile Millo 2004	Frederica von Stade 2012
John R. Stafford 1994	Teddy Pendergrass 2004	Byron Janis 2012
Anthony Quinn 1994	James Gerlach 2005	Vy Higginsen 2013
Alan King 1994	Giorgio Tozzi 2005	Susanne Mentzer 2013
Phyllis Curtin 1994	Shirley Verrett 2005	Roberta Flack 2014
Hans von Leden 1994	Martina Arroyo 2006	Denise Graves 2014
Rotan E. Lee 1994	Richard Miller, PhD 2006	Lucille Rubin 2014
David W. Brewer MD 1995	Ben Vereen 2006	Dolora Zajick 2015
Malcolm Poindexter 1995	Harolyn Blackwell 2007	Catherine Malfitano 2016
Brian McDonough MD 1996	Robert Goulet 2007	Drexel U. & John Fry 2016
Licia Albanese 1997	Marni Nixon 2007	Reri Grist 2017
Berle Schiller 1997	Claudia Catania 2008	Daniel Schidlow, MD 2017
Leon Fassler 1998	Lisa Thomas-Laury 2008	K. James McDowell 2017
Sherrill Milnes 1998	Manuel N. Stamatakis 2008	Simon Estes 2018
Grace Bumbry 1999	Glen Campbell 2009	Karen Hepp 2018
Matina Horner 1999	Charles Dutoit 2009	Lauren Johnson 2018
George Shirley 1999	Ruth Ann Swenson 2009	Walter Williams 2018
David Bradley 2000	Richard Homan 2010	
Richard Leech 2000	Peter Nero 2010	

G. PAUL MOORE LECTURERS			AWARD HISTORY 2018 47TH ANNUAL SYMPOSIUM
G. Paul Moore 1981	Robert T. Sataloff 1994	Jean Abitbol 2007	
Hans von Leden 1982	Richard Miller 1995	Diane Bless 2008	
Friedrich Brodnitz 1983	Nobuhiko Isshiki 1996	Michael S. Benninger 2009	
Harry Hollien 1984	Aatto Sonninen 1997	Bonnie Raphael 2010	
John A. Kirchner 1985	Steven Gray 1998	Katherine Verdolini Abbott 2011	
Henry J. Rubin 1986	Joel Kahane 1999	Peak Woo 2012	
Minoru Hirano 1987	Jean Westerman Gregg 2000	Thomas Murry 2013	
David W. Brewer 1988	Daniel R. Boone 2001	Gayle Woodson 2014	
Johan Sundberg 1989	Ronald C. Scherer 2002	Brenda Smith 2015	
Oskar Kleinsasser 1990	Charles Ford 2003	Mara Behlau 2016	
Wilbur J. Gould 1991	R. J. Baken 2004	Sten Ternström 2017	
Ingo R. Titze 1992	Janina Casper 2005	Nicolas Maragos 2018	
Harvey M. Tucker 1993	Christy Ludlow 2006		
QUINTANA VOICE RESEARCH AWARD RECIPIENTS			
Kenzo Ishizaka 1989	Aatto Sonninen 1997	Kiyoshi Honda 2012	
Gunnar Fant 1990	Donald Childers 2000	Fariborz Alipour 2014	
Ingo R. Titze 1991	Adrian Fourcin 2004	Ulrich Eysholdt 2015	
Kenneth Stevens 1992	Masayuki Sawashima 2006	RJ Baken 2016	
Martin Rothenberg 1993	Johan Sundberg 2008	Dimitar Deliyiski 2017	
Jan Gauffin 1995	Harm Schutte 2010	Luc Mongeau 2018	
BEST STUDENT PRESENTATION			
Matthew Schloneger 2015	Marion Semmler 2016	Jeong Min Lee 2017	
HAMDAN INTERNATIONAL PRESENTATION AWARD			
Laura Enflo 2012	Edwin M.L. Yiu 2014	Meike Brockman-Bausier 2016	
Christian Herbst 2013	Anna Rumbach 2015	Claudio Stork 2017	
SATALOFF YOUNG INVESTIGATORS AWARD RECIPIENTS			
Heather Shaw Bonilha 2009	Aaron Johnson 2013	Christian T. Herbst 2016	
Rosiane Yamasaki 2010	Jessica Sofranco Kisenwether 2014	Maryam Naghibolhosseini 2017	
Satoshi Ohno 2011	Stephanie Misono 2015		
Matthew Hoffman 2012			
HONORED MASTER CLASS TEACHERS			
Renata Scotto 1984	Ruth Falcon 1996	Katherine Ciesinski 2008	
John Moriarty 1985	Cynthia Hoffmann 1997	John Burrows 2009	
John Wustman 1986	Sherrill Milnes 1998	Harolyn Blackwell 2010	
Anna Moffo 1987	Leslie Guinn 1999	Diana Soviero 2011	
Phyllis Curtin 1988	Claudia Catania 2000	Frederica von Stade 2012	
Max Rudolf 1989	Tito Capobianco 2001	Susanne Mentzer 2013	
Frank Guerarra 1990	Susan Ashbaker 2002	Denyce Graves 2014	
Craig Ruttenberg 1991	Sharon Sweet 2003	Dolora Zajick 2015	
Barbara Silverstein 1992	Christofer Macatsoris 2004	Dolora Zajick 2016	
Harold Evans 1993	Shirley Verrett 2005	Reri Grist 2017	
Phyllis Curtin 1994	Martina Arroyo 2006	Simon Estes 2018	
George Shirley 1995	Susan Ashbaker 2007		

EXHIBITORS,
DONORS,
GRANTS
2018
47TH
ANNUAL
SYMPOSIUM

THE VOICE FOUNDATION

Exhibitors

47TH Annual Symposium Exhibitors *as of press time:*

Bluetree Publishing	NYSTA; New York State
Boston Scientific	Singing Teacher's Association
Compton Publishing	Olympus America Inc.
Comunikrte	Plural Publishing
Elsevier, Inc	Professionally Speaking
Integra Life Sciences	Restech, Inc.
PENTAX Medical	Smith & Nephew
NATS: National Association of Teachers of Singing	S. Karger AG

Thanks To Our Donors:

Brightest Voices

Diane M. Bless

Dr. Michael Benninger

Abdul-latif Hamdan

Soaring Singers - In Memory of...

Helen Gallivan in memory of Dr. Gregory J. Gallivan
Caren Sokolow in memory of Mrs. Ruth Sataloff
RJ Baken in memory of Mrs. Ruth Sataloff

Shining Vocalists

Keisa Ababio
Dr. Joseph & Elizabeth Anticaglia
Martha and John McManamy
Maria Elza Kazumi Yamaguti Dorfman
Nancy P. Solomon

Salute to our Chapters

Atlanta, Chicago, China, Greater Milwaukee,
Houston Area, New England, North Carolina,
North Texas, Northwest/Seattle, S. California,
Brazil, Lebanon, Mexico

If you are interested in starting a local chapter in your area,
please contact office@voicefoundation.org
or (215) 735-7999.

THE VOICE FOUNDATION

INVITES YOU TO BE AN ACTIVE SUPPORTING MEMBER

Associate Membership

\$50 annual contribution (domestic)
\$75 annual contribution
(international)

Benefits

- 10% discount on registration to the Foundation's Annual Symposium: Care of the Professional Voice, the meeting for voice experts from all over the world
- One-year subscription to the Voice Foundation's Newsletter. Keep current with the latest developments in voice science, care and training through informative articles on health tips, voice care and much more
- 10% discount on purchases from the Foundation's catalogue of videotapes, DVDs and transcripts
- Advance Notice of all Foundation events
- Certificate of Membership

Sustaining Membership

\$125 annual contribution (domestic)
\$150 annual contribution
(international)

Benefits

- All Associate level benefits, plus...
- A 15% discount on registration to the Foundation's Annual Symposium: Care of the Professional Voice, the meeting for voice experts from all over the world.

**Sign up at the Registration Desk*

Professional Membership

\$250 annual contribution
(domestic)
\$275 annual contribution
(international)

Benefits

- All Associate level benefits, plus...
- A 20% discount on Symposium registration fees
- A complimentary annual subscription to *Journal of Voice*, the Foundation's official, scholarly, bimonthly publication

Institutional Membership

\$500 annual contribution (domestic and international)

Benefits

- All Professional level benefits, plus...
- 20% Symposium discount for 2 attendees

Corporate Membership

\$2,500 minimum annual contribution
(domestic and international)

Benefits

- All Professional level benefits, plus...
- 25% discount on exhibition display fees at the Foundation's Annual Symposium: Care of the Professional Voice, the meeting for voice experts from all over the world

Life Membership

\$5,000 one-time contribution,
individuals only

Benefits

- All Professional level benefits for life

THE VOICE
FOUNDATION
MEMBERSHIP
2018
47TH
ANNUAL
SYMPOSIUM

REGISTER
2018
47TH
ANNUAL
SYMPOSIUM

Registration is available online at voicefoundation.org/annual-symposium/register/

Registration completed before April 24, 2018 qualifies for a discounted rate.

***Full Course** includes:

All sessions, **Gala**, Workshops, Master Class and Receptions

***All Sessions** includes:

All sessions, **(No Gala)**, Workshops, Master Class and Receptions

***Daily Rates**

includes: Single days, **(No Gala)**, Workshops, Master Class and Receptions on the chosen day(s)

Selections

	Full Course - All Activities	All Sessions (no Gala)	Daily Rate (no Gala)	*Workshops Only	*Master Class Only
Before April 24th					
Physician	\$750.	n/a	\$200.		
Non-	\$600.	\$405.	\$155.	\$55.	\$50.
Student	\$345.	\$150.	\$55.		
After April 24th					
Physician	\$850.		\$225.		
Non-	\$700.	\$505.	\$215.	\$55.	\$50.
Student	\$395.	\$200.	\$70.		

Gala (for Symposium attendees): \$195

Gala (for non-Symposium attendees): \$250

Current Voice Foundation members receive a

Symposium discount! The promotional codes, which should be entered in the online registration page, were sent to all members via e-mail. *If you are a current member and did not receive this promotional code, please contact office@voicefoundation.org.*

THURSDAY, MAY 31

Quintana Award
Committee
7:20am - 8:10am
The Board Room

Journal of Voice
Editorial Board
12:00pm - 1:30pm
TBD

Presentation Outreach
Committee
12:00pm - 1:30pm
The Board Room

FRIDAY, JUNE 1

Advisory Board
6:45am - 8:00am
The Director's Room

TVF Board of Directors
12:15pm - 1:30pm
The Board Room

Young Laryngologist Study
Group
12:15pm
The Director's Room

SATURDAY, JUNE 2

New Investigator
Research Forum
7:00am - 7:50am
The Board Room

Voice Laboratory
Representatives
12:00 - 12:55pm
The Director's Room

Voice Foundation Local
Chapters
12:00 - 12:55pm
The Board Room

NATS Luncheon–
Dutch Treat
Ruby Tuesday Restaurant
12:00-12:55pm

SUNDAY, JUNE 3

Symposium Planning
Committee
12:00pm - 1:00pm
The Board Room

**MEETING
SCHEDULE
2018
47TH
ANNUAL
SYMPOSIUM**

THANK YOU...

**for your participation in our Annual Symposium.
CARE OF THE PROFESSIONAL VOICE**

**Your membership dues, donations, and contributions
enable us to continue The Voice Foundation's mission.
Become a member at Voicefoundation.org**

Wednesday		Time	Thursday	Time	Friday
1:00 PM	Registration			6:45 AM	Advisory Board
2:00 PM	Welcome	7:00 AM		7:00 AM	
2:15 PM	Overview	7:20 AM	Meetings	7:20 AM	Registration
2:30 PM	RT Sataloff	7:25 AM	Quintana Committee		
2:45 PM	Anat & Phys. Of	7:30 AM	Registration	8:00 AM	Special Session
3:00 PM	Production &	7:45 AM	Welcome		Voice and Exercise -
3:15 PM	Perception of Voice	8:00 AM			Nancy Solomon, Mod.
3:30 PM	An Overview	8:15 AM	Basic Science I		Sandage, Johnson
3:45 PM	C. Larson, J. Sundberg	8:30 AM			
4:00 PM	Coffee Break	8:45 AM			
4:15 PM	Production...cont	9:00 AM		9:20 AM	Coffee Break
4:30 PM	R. Scherer	9:15 AM			
4:50 PM		9:30 AM	Quintana Lecture	9:50 AM	Friedlander, Moliterno
5:00 PM	Sten Ternström	9:45 AM	Luc Mongeau, PhD		
5:15 PM		10:00 AM	Coffee Break		
5:30 PM	R. Shrivastav	10:15 AM	Basic Science II & III	11:00 AM	Panel Discussion
5:45 PM		10:30 AM			
6:00 PM	W. Riley	10:45 AM			
6:15 PM		11:00 AM			
6:30 PM	Discussion	11:15 AM			
6:45 PM		11:30 AM	Panel Discussion	11:50 AM	V Lawrence Award
7:00 PM	Adjorn	11:45 AM		12:00 PM	Lunch
		12:00 PM	Lunch		TVF Board of Directors
		12:15 PM	Meetings		Young Laryngologists
		12:30 PM	JOV Editorial Board		REMOVE POSTERS
		12:45 PM	Pres. Outreach	1:30 PM	Workshops
		1:00 PM			Session I
		1:15 PM		2:25 PM	
		1:30 PM	Keynote Speech	2:30 PM	Workshops
		1:45 PM	Boris Alexander		Session II
		2:00 PM	Kleber, PhD	3:25 PM	Workshops
		2:15 PM		3:30 PM	Session III
		2:30 PM	Basic Science IV		
		2:45 PM		4:25 PM	Workshops
		3:00 PM		4:30 PM	Session IV
		3:20 PM	Panel Discussion		
		3:35 PM		5:25 PM	
		3:50 PM			
		4:00 PM	Poster Session I		TICKETS REQUIRED
		4:15 PM	and Coffee	6:00 PM	Cocktail Reception
		4:30 PM			
		4:45 PM			Dinner
		5:00 PM	Poster Session II		
		5:15 PM			Voices of Summer
		5:30 PM			Gala (Black Tie)
		5:45 PM	Dinner		
		6:00 PM			Sackler Award
		6:15 PM			VERA AWARD
		6:30 PM			
		7:00 PM			Dancing
		7:15 PM	Basic Science		
		7:30 PM	Special Session		
		8:15 PM	Adjorn	11:30 PM	

Time	Saturday	Time	Sunday
7:00 AM	Meetings	7:00 AM	
7:20 AM	New Investigator Research Forum	7:15 AM	
7:35 AM	7:00am - 7:50am	7:30 AM	Registration
7:30 AM	Registration	7:45 AM	
8:00 AM	Medical 1A	8:00 AM	Medical IIA
	Medical 1B	8:15 AM	Medical IIB
		8:30 AM	
		8:50 AM	
	Discussion		Discussion
	Discussion		Discussion
9:50 AM	Coffee Break	9:50 AM	Discussion
		10:00 AM	Discussion
10:10 AM	PANEL		Coffee Break
	Challenges in Pediatric Voice	10:30 AM	
	Julina Ongkasuwan, MD, Moderator		PANEL
11:00 AM	Awards		Vague and Vagal Throat Symptoms: How Do We Figure Them Out?
11:10 AM	G Paul Moore Lecture		Kuhn, Joel Portnoy, Roth, Sadoughi W. LeBorgne
	Nicholas Maragos, MD	11:20 AM	PANEL
	Doing No Harm		Stroboscopy Oscars
12:00 PM	LUNCH		Michael M. Johns and Eva van Leer
	Local Chapters Meeting		The Academy = YOU
	Voice Lab Reps	12:10 PM	LUNCH
			Symposium Planning Committee
1:00 PM	Speech Path 1A	1:00 PM	Vocal Ped IA
	Speech Path 1B		Vocal Ped IB
	Discussion		
	Discussion		
2:50 PM			
3:00 PM	Coffee Break		
3:30 PM	Speech Path IIA	3:40 PM	Discussion
	Speech Path IIB		Discussion
		4:30 PM	Discussion
5:00 PM		4:50 PM	Discussion
5:10 PM	Dinner	5:00 PM	Closing Remarks RT Sataloff
			Meeting Adjourned
6:00 PM	Special Sessions		
	On-Site Delivery of Voice Care Services for		
	Professional Voice Users:		
	Cases and Outcomes		
6:50 PM	Perfect Harmony: The Future of Cross-Over		
	Singing Voice Education in		
	University Music Programs		
7:45 PM	MASTER CLASS		
9:30 PM	Reception		
	Sing-Along with Grant		

**The Voice Foundation's 47th Annual Symposium:
Care of the Professional Voice**

MAY 30 — JUNE 3, 2018
The Westin Philadelphia
Philadelphia, Pennsylvania, USA

THE VOICE FOUNDATION
219 N. Broad St. 10FL
Philadelphia, PA 19107 USA
(215) 735-7999
Fax (215) 762-5572

www.voicefoundation.org office@voicefoundation.org

Symposium registration is available online at:
<http://voicefoundation.org/annual-symposium/register/>

Registration completed before April 24, 2018 qualifies for a discounted rate.

Please see page 74 of the 2018 Symposium program for registration pricing and further information.

Hotel reservations can be made online at:
<https://www.starwoodmeeting.com/Book/voicefound2018>
Please book by May 1, 2018 for the group rate.



Nonprofit
Organization U.S.
Postage
PAID
Philadelphia, PA
Permit No. 977